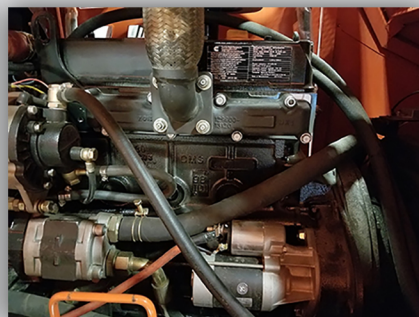
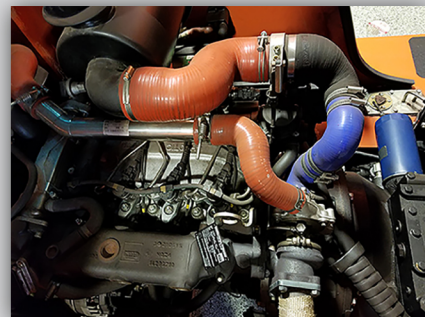


SELECT AND UPGRADE VARIOUS FEATURES AND ATTACHMENTS TO CREATE YOUR ONE OF A KIND VIPER LIFT TRUCK



## HATZ 4H50TIC

-DIESEL ENGINE-

Displacement: 1.95L

Engine Layout: I-4

Valvetrain: 8 valves

Bore x Stroke: 3.31 x 3.46 inches

Head material: Cast aluminum

Block material: Gray cast iron

Piston material: Aluminum

Power: 75 hp

Torque: 177 lb-ft

Emissions: EPA Tier 4F

Induction: Single turbocharger

Intercooler: Air-to-air

Cooling System: Liquid-cooled

Fuel System: High-pressure, common-rail

Lubrication System: Wet sump

Lubrication Capacity: 7.4 quarts

Dry Weight: 381 pounds

Length: 29.25 inches

Width: 24.76 inches

Height: 25.63 inches

## CUMMINS B 3.3L

-DIESEL ENGINE-

Displacement: 3.3L

Engine Layout: I-4

Valvetrain: 8 valves

Bore x Stroke: 3.74 x 4.528 inches

Head material: Cast aluminum

Block material: Gray cast iron

Piston material: Aluminum

Power: 60-85 hp

Torque: 158-224 lb-ft

Emissions: EPA Tier 4i

Induction: Naturally Aspirated

Intercooler: Air-to-air

Cooling System: Naturally Aspirated

Fuel System: Naturally Aspirated

Lubrication System: Naturally Aspirated

Lubrication Capacity: 7.4 quarts

Dry Weight: 540 pounds

Length: 27.7 inches

Width: 22.8 inches

Height: 25.63 inches



**RT8000**



**RTD35**



**RT80**

\*CURRENT VALUES ARE SUBJECT TO CHANGE BASED UPON ADDITIONAL ATTACHMENT AND FEATURES\*

Model Number				RT8000	RTD30	RTD35	RT60	RT80		
GENERAL	Power Type	2		Diesel	Diesel	Diesel	Diesel	Diesel		
	Rated Capacity (base)	3	lbs	8000	6000	8000	6000	8000		
	Load Center	4	in	24	24	24	24	24		
DIMENSIONS & PERFORMANCE	Mast Tilt Angle		F/R	7	deg	6/12	8/10	8/10	10/12	10/12
	Overhang		Wheel Center to Fork Face	8	in	21	20	20	28	28
	Clearance		Bottom of Mast	9	in	10	12	12	13	13
	Length		Rear to Face of Carriage	10	in	147	124	124	132	132
	Overall Width			11	in	66	62	62	73	73
	Overhead Guard Height			14	in	107	87	87	88	89
	Outside Turning Radius			15	in	187	111	111	172	172
	Minimum Intersecting Aisle			16	in	118	105	105	256	256
	Travel Speed			17	m/hr	10	14	14	16	16
	Travel Speed			18	in/s	15	19	19	20	20
Maximum Gradeability			19	%	22	20	20	30	30	
CHASSIS	Front Tire		Pneumatic	20		14.00-24	14-17.5-14	14-17.5-14	405/70-20 14	405/70-20 14
	Rear Tire		Pneumatic	21		14.00-24	27x10-12-12	27x10-12-12	10.0/75-15.3	10.0/75-15.3
	Wheelbase			22	in	82	72	72	78	78
	Service Weight			23	lbs	10,604	10,582	12,789	12,566	13,907
POWER TRAIN	Engine Type / Model			25		B3.3	B3.3	B3.3	4H50TIC	4H50TIC
	Engine Manufacturer			26		CUMMINS	CUMMINS	CUMMINS	HATZ	HATZ
	Warranty Available			27		YES	YES	YES	YES	YES
	Battery			28	v/ah	12/135	12/90	12/90	12/120	12/120
	Transmission Type			29		Powershift/Automatic	Powershift/Automatic	Powershift/Automatic	Powershift/Automatic	Powershift/Automatic
Transmission Stage			30	fwd/rvs	2/2	1/1	1/1	3/2	3/2	

