

**NISSAN**  
**FORKLIFT**

by **UNICARRIERS**



**Electric  
Counterbalanced  
Forklift Trucks**



## **Platinum TX Series**

**36 & V8 Volt AC-Powered Models**

*Specification Sheet*

**3,000 / 3,500 / 4,000 lbs.**

**Class I | 3-Wheel Sit Down Type**



## MAIN TRUCK SPECIFICATIONS

CHARACTERISTICS	1			UniCarriers		UniCarriers		UniCarriers	
	2			TX30N		TX35N		TX40N	
	3			A1N1L15V		A1N1L18V		AG1N1L20V	
CHARACTERISTICS	4			3000 (1350)		3500 (1600)		4000 (1800)	
	5			36V   48V		36V   48V		36V   48V	
	6			Sit Down		Sit Down		Sit Down	
	7			Cushion		Cushion		Cushion	
	8			2 x / 2		2 x / 2		2 x / 2	
	9			130 (3300)		130 (3300)		130 (3300)	
DIMENSIONS	10			82.9 (2105)		82.9 (2105)		82.9 (2105)	
	11			179.4 (4555)		179.4 (4555)		179.4 (4555)	
	12			4/6		4/6		4/6	
	13			2.3 (60)		2.3 (60)		2.3 (60)	
	14			36.2 (920)		36.2 (920)		36.2 (920)	
	15			47.0 (1195)		47.0 (1195)		47.0 (1195)	
	16			42 x 4 x 1.5 (1070 x 100 x 40)					
	17			8.1 (205) / 35.8 (910)		8.1 (205) / 35.8 (910)		8.1 (205) / 35.8 (910)	
	18			74.6 (1895)		74.6 (1895)		78.9 (2005)	
	19			43.5 (1105)		43.5 (1105)		43.5 (1105)	
	20			83.1 (2110)		83.1 (2110)		83.1 (2110)	
	21			27 / 32 / 65		27 / 32 / 65		27 / 29 / 65	
	22			14.6 (370)		14.6 (370)		14.6 (370)	
	23			8.8 (225)		8.8 (225)		8.8 (225)	
	24			60.0 (1525)		60.0 (1525)		64.4 (1635)	
25			74.6 (1895)		74.6 (1895)		78.9 (2005)		
PERFORMANCE	26			9.0 (14.5)   9.9 (16.0)		9.0 (14.5)   9.9 (16.0)		9.0 (14.5)   9.9 (16.0)	
	27			9.0 (14.5)   9.9 (16.0)		9.0 (14.5)   9.9 (16.0)		9.0 (14.5)   9.9 (16.0)	
	28			66.9 (340)   78.7 (400)		61.0 (310)   72.8 (370)		53.1 (270)   63.0 (320)	
	29			101.4 (515)   118.1 (600)		101.4 (515)   118.1 (600)		101.4 (515)   118.1 (600)	
	30			98.4 (500) / 98.4 (500)		98.4 (500) / 98.4 (500)		98.4 (500) / 98.4 (500)	
	31			2280 (10144)   2360 (10500)		2280 (10144)   2360 (10500)		2280 (10144)   2360 (10500)	
	32			20.8 / 32.3   20.4 / 30.4		18.7 / 30.0   17.9 / 27.8		16.1 / 26.0   16.1 / 25.6	
WEIGHT	33			6515 (2955)		6955 (3155)		7420 (3365)	
	34			8600 (3900)		9515 (4315)		10500 (4760)	
	35			915 (415)		935 (425)		925 (420)	
	36			3340 (1515)		3370 (1530)		3715 (1685)	
	37			3175 (1440)		3585 (1625)		3705 (1680)	
CHASSIS & WHEELS	38			18 x 7 x 12-1/8		18 x 7 x 12-1/8		18 x 7 x 12-1/8	
	39			15 x 5 x 11-1/4		15 x 5 x 11-1/4		15 x 5 x 11-1/4	
	40			51.2 (1300)		51.2 (1300)		55.5 (1410)	
	41			36.6 (930) / 6.9 (175)		36.6 (930) / 6.9 (175)		36.6 (930) / 6.9 (175)	
	42			2.9 (75)		2.9 (75)		2.9 (75)	
	43			3.9 (100)		3.9 (100)		3.9 (100)	
	44			Hydraulic / Electric		Hydraulic / Electric		Hydraulic / Electric	
	45			Hand Activated		Hand Activated		Hand Activated	
DRIVE LINE	46			Hydrostatic		Hydrostatic		Hydrostatic	
	47			AC Induction		AC Induction		AC Induction	
	48			MOS FET Inverter		MOS FET Inverter		MOS FET Inverter	
	49			5.2 x 2   7.1 x 2		5.2 x 2   7.1 x 2		5.2 x 2   7.1 x 2	
	50			AC Induction		AC Induction		AC Induction	
BATTERY	51			10.7   14.6		10.7   14.6		10.7   14.6	
	52			38-3/4 x 25-3/8 (985 x 645)					
	53			20-9/16 (522)		20-9/16 (522)		24-13/16 (632)	
	54			680   510		680   510		750   600	
	55			800   600		800   600		1000   780	
	56			18-85-17 / 24-85-13		18-85-17 / 24-85-13		18-85-21 / 24-100-15	
	57			1545 (700)   2425 (1100)		1545 (700)   2205 (1000)		2315 (1050)   2535 (1150)	
	58			4.0 (100)		4.0 (100)		4.0 (100)	

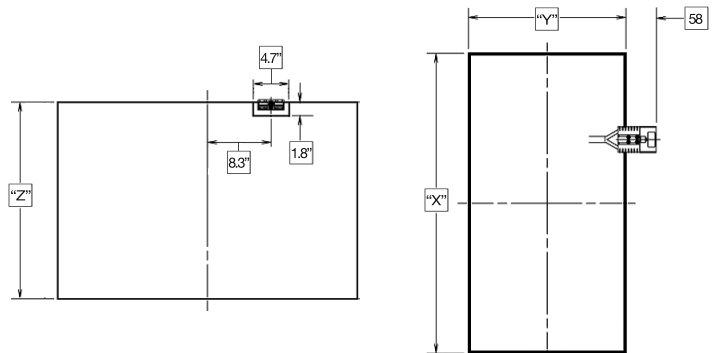
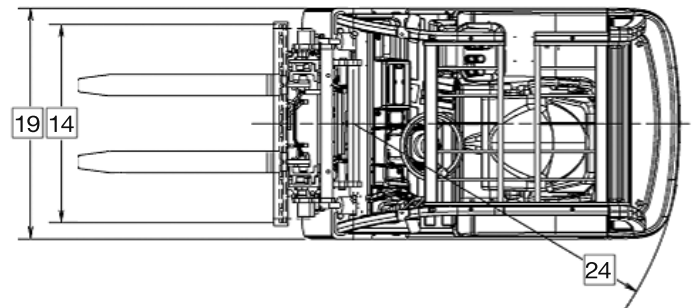
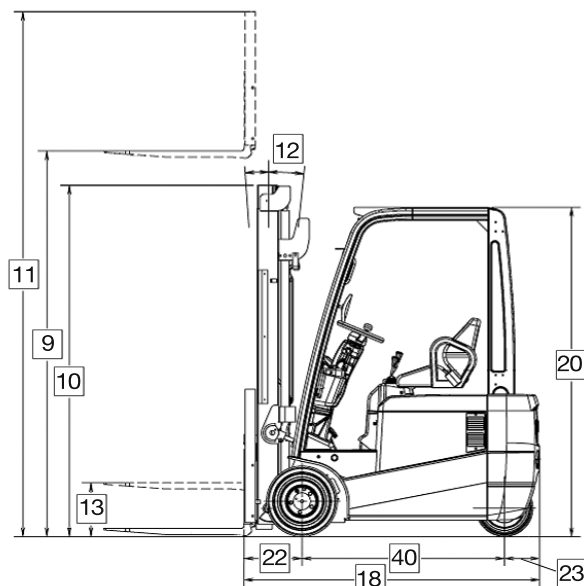
<sup>1</sup>Calculation based on 3 minute rating | <sup>2</sup>Calculation based on 5 minute rating

<sup>3</sup>Required battery size to conform to UL | <sup>4</sup>TX35N with Solid Pneumatic Tires - Max Battery Weight is 1985 lb (900 kg)

## MAST SPECIFICATIONS & RATED CAPACITIES

		Maximum Fork Height		Overall Height		Free Lift		Tilt Angle	Rated Capacity at 24 in (600) Load Center		
		MHL	OHL	Lowered	Fully Extended	With LBR	Without LBR	Fwd/ Bkwd	TX30N	TX35N	TX40N
				in (mm)	in (mm)						
		in (mm)	in (mm)	in (mm)	in (mm)	in (mm)	in (mm)	degrees	lb (kg)	lb (kg)	lb (kg)
TWO STAGE (Wide View)	2W270	106 (2700)	71.1 (1805)	155.8 (3960)	131.3 (3335)	2.3 (55)	2.3 (55)	4/6	3000 (1350)	3500 (1600)	4000 (1800)
	2W300	118 (3000)	77.0 (1955)	167.6 (4260)	143.2 (3640)	2.3 (55)	2.3 (55)	4/6	3000 (1350)	3500 (1600)	4000 (1800)
	2W330	130 (3300)	82.9 (2105)	179.4 (4560)	155.0 (3940)	2.3 (55)	2.3 (55)	4/6	3000 (1350)	3500 (1600)	4000 (1800)
	2W350	138 (3500)	88.2 (2240)	187.3 (4760)	162.8 (4135)	2.3 (55)	2.3 (55)	4/6	3000 (1350)	3500 (1600)	4000 (1800)
	2W370	146 (3700)	93.2 (2370)	195.1 (4955)	170.7 (4335)	2.3 (55)	2.3 (55)	4/6	3000 (1350)	3500 (1600)	4000 (1800)
	2W400	157 (4000)	100.6 (2555)	206.9 (5255)	182.5 (4635)	2.3 (55)	2.3 (55)	4/6	3000 (1350)	3500 (1600)	3900 (1750)
	2W450	177 (4500)	110.5 (2810)	226.6 (5760)	202.2 (5135)	2.3 (55)	2.3 (55)	4/6	2900 (1300)	3300 (1500)	3700 (1650)
2W500	197 (5000)	120.3 (3055)	246.3 (6255)	221.9 (5635)	2.3 (55)	2.3 (55)	4/6	2800 (1250)	3100 (1400)	3600 (1600)	
TWO STAGE (Full Free)	2F270	106 (2700)	71.1 (1805)	155.8 (3960)	131.3 (3335)	21.6 (545)	46.0 (1165)	4/6	3000 (1350)	3500 (1600)	4000 (1800)
	2F300	118 (3000)	77.0 (1955)	167.6 (4260)	143.2 (3640)	27.5 (695)	51.9 (1315)	4/6	3000 (1350)	3500 (1600)	4000 (1800)
	2F330	130 (3300)	82.9 (2105)	179.4 (4560)	155.0 (3940)	33.4 (845)	57.8 (1465)	4/6	3000 (1350)	3500 (1600)	4000 (1800)
	2F350	138 (3500)	88.2 (2240)	187.3 (4760)	162.8 (4135)	38.7 (980)	63.1 (1600)	4/6	3000 (1350)	3500 (1600)	4000 (1800)
	2F370	146 (3700)	93.2 (2370)	195.1 (4955)	170.7 (4335)	43.7 (1110)	68.1 (1730)	4/6	3000 (1350)	3500 (1600)	4000 (1800)
	2F400	157 (4000)	100.6 (2555)	206.9 (5255)	182.5 (4635)	51.1 (1295)	75.5 (1915)	4/6	3000 (1350)	3400 (1550)	3900 (1750)
THREE STAGE (Full Free)	3F385	152 (3850)	71.1 (1805)	201.0 (5105)	176.6 (4485)	21.6 (545)	46.0 (1165)	5/5	3000 (1350)	3400 (1550)	3800 (1700)
	3F430	169 (4300)	77.0 (1955)	218.8 (5560)	194.3 (4935)	27.5 (695)	51.9 (1315)	5/5	2900 (1300)	3300 (1500)	3700 (1650)
	3F475	187 (4750)	82.9 (2105)	236.5 (6010)	212.1 (5390)	33.4 (845)	57.8 (1465)	5/5	2800 (1250)	3200 (1450)	3600 (1600)
	3F515	203 (5150)	88.2 (2240)	252.4 (6410)	227.8 (5790)	38.7 (980)	63.1 (1600)	5/5	2700 (1200)	3100 (1350)	3500 (1550)
	3F550	217 (5500)	93.2 (2370)	266.0 (6755)	241.6 (6140)	43.7 (1110)	68.1 (1730)	5/5	2600 (1100)	2900 (1300)	3400 (1550)
	3F600	236 (6000)	100.6 (2555)	285.7 (7260)	261.3 (6640)	51.1 (1295)	75.5 (1915)	5/5	2300 (1050)	2400 (1100)	3300 (1500)
	3F650	256 (6500)	110.5 (2810)	305.4 (7760)	281.0 (7140)	61.0 (1545)	85.4 (2165)	5/5	1900 (850)	N/A	3200 (1450)
	3F700	276 (7000)	120.3 (3055)	325.0 (8255)	300.6 (7635)	70.8 (1795)	95.2 (2415)	5/5	1400 (650)	N/A	3000 (1350)
THREE STAGE OPTVIEW®	3V360	142 (3600)	71.1 (1805)	189.8 (4820)	168.4 (4280)	23.0 (580)	44.4 (1125)	5/5	2800 (1250)	3000 (1350)	3700 (1650)
	3V405	159 (4050)	77.0 (1955)	207.5 (5270)	186.1 (4730)	28.9 (730)	50.3 (1275)	5/5	2700 (1200)	3000 (1350)	3600 (1650)
	3V450	177 (4500)	82.9 (2105)	225.2 (5720)	203.8 (5180)	34.8 (880)	56.2 (1425)	5/5	2700 (1200)	3000 (1350)	3400 (1550)
	3V490	193 (4900)	88.2 (2240)	241.0 (6120)	219.7 (5580)	40.1 (1015)	61.4 (1560)	5/5	2600 (1100)	2900 (1300)	3300 (1500)
	3V525	207 (5250)	93.2 (2370)	254.8 (6470)	233.3 (5925)	45.0 (1140)	66.5 (1685)	5/5	2500 (1100)	2800 (1250)	3200 (1450)
	3V575	226 (5750)	100.6 (2555)	274.5 (6975)	253.0 (6425)	52.5 (1330)	74.0 (1880)	5/5	2300 (1050)	2400 (1100)	3100 (1400)
	3V633	249 (6330)	110.5 (2810)	297.3 (7550)	275.8 (7005)	62.4 (1585)	83.8 (2125)	5/5	1900 (850)	N/A	3000 (1350)
3V688	271 (6880)	120.3 (3055)	318.9 (8100)	297.5 (7555)	72.2 (1830)	93.7 (2380)	5/5	1400 (650)	N/A	2900 (1300)	

## DIMENSIONS



### ERGONOMICS & COMFORT

The TX Series offers a variety of operator conveniences for greater productivity including a standard full suspension seat for enhanced shock absorption. The seat features weight and back-angle adjustments, hip restraints and a retractable seat belt. A standard small diameter, tilt steering wheel can be paired with an optional spinner knob for extra operator control. An optional higher steering column provides an extra 2" of height. The TX includes an anti-fatigue cushioned floor mat for a smoother, more comfortable ride. Compact front cowl offers generous leg and foot room. Low profile dashboard provides excellent fork tip visibility, while still supplying ample headroom. Our exclusive optional OptiView® three-stage mast offers increased forward visibility for enhanced load handling.

Our standard Operator Presence System includes Return-to-Neutral and Auto-Mast Lock, automatically preventing mast lift and tilt operations when the operator leaves the seat. Audible and visual warnings notify operator if seat belt is not engaged, or if parking brake is not applied before exiting truck. Other communications visible through the LCD meter panel include truck's travel speed (above 2 mph) and steer wheel indicator (below 2 mph), battery capacity, regeneration indicator, 4-mode hour meter, time, calendar, and selected power setting (performance mode).

On-demand, hydraulic power steering reduces operator effort for easier maneuvering and less fatigue, while a load sensing valve prioritizes hydraulic fluid to truck's steering system when needed. Heel-to-toe brake pedal improves the ease of operation. Hand-operated parking brake includes a lock release, and is located on the cowl, within easy reach.

Standard deck-mounted hydraulic control levers offer enhanced ergonomics. Optional fingertip control levers available with an adjustable armrest. Select this option with either a single lift/tilt lever design or separate lift and tilt control levers. Optional auto-tilt leveling system assists operator during mast/fork positioning and is only available with fingertip control, separate lift and tilt lever option.

### EFFICIENCY & CONTROL

Compact steering wheel provides clear view of meter panel with visibility to warnings and indicators. A standard controlled rollback feature reduces the truck's reverse descent when the accelerator is released while on a gradient.

Dual front wheel drive provides excellent tractions and braking power. Rugged dual AC powered drive motors offer more power and quicker response. The TX Series' individually controlled drive motors mean that power is transferred to each motor independently, depending upon turn angle input. For tighter turns, the inner drive wheel counter-rotates, allowing the truck to turn on the spot.

The TX Series may be programmed with Personal Identification Number (PIN) codes to help prevent unauthorized truck usage for greater fleet control. Each of the five PINs provides access to a customized operating profile.

The TX includes three factory-programmed performance settings (Economy, Performance, High) which can be modified to fit driver preferences, operating restrictions and/or load handling conditions. Economy mode offers extended run time. Performance (standard) mode offers mid-range settings. High performance mode is intended for faster acceleration and travel, among the truck's other adjustable settings. Use the Manual mode to personalize up to 12 performance settings. All setting modifications must be made by a trained service technician.

A unique Flex-Logic acceleration control enables the truck to respond according to the speed with which the pedal is depressed, providing the driver with more accurate, precise acceleration. Can be adjusted to suit operating conditions. Maximum travel speed is also adjustable through the meter panel. Both settings can be adjusted by a trained service technician.

### LOWER OPERATING COSTS

The TX Series features a 100% AC-powered motor and controller system, incorporating a single contactor for reduced maintenance. Truck includes AC pump motor to power its lift and steering system, so a separate steering motor is not required. Motor and controller system design greatly reduces or eliminates many serviceable parts (commutators, contactors and brushes), along with related inspection and replacement expenses. Its AC TECH controller includes a built-in-test-equipment module with self-diagnostics and coded service history logged by hour meter reading. Multi-function LCD panel includes on-board diagnostics with all troubleshooting completed through the instrument panel, for reduced service time. No additional handset tool is required.

Modular, four-piece overhead guard simplifies replacement of individual components if necessary, saving time and money. Hydraulic fluid access for level checks and additions is available under the hood, on the right side of the truck. The brake fluid can be checked quickly, via a door located on the front cowl.

Powertrain maintenance is simplified due to its modular design - both gear box and motor can be removed as a single unit, without the need to remove the mast for service.

### EFFICIENT PERFORMANCE & GREATER UPTIME

The TX Series' AC motor and controller system features MOS-FET power inverters for DC to three phase AC power conversion. The TX Series controllers are IP65 rated. They're located between the counterweight and battery box, and protected by two removable panels. Thermal sensors help protect both motors and controller against overheating. Warning indicator will advise operator if overheating has occurred, followed by reduced travel and lift operations. Data is automatically locked into truck's service history to assist the technician.

Our AC TECH controller provides lower battery consumption and optimum operating efficiencies through regenerative braking, automatic deceleration, and on-demand power steering. Advanced regenerative braking technologies help reclaim energy using five efficient operations (switch-back/plugging, foot applied, neutral braking (accelerator off), controlled rollback and lift stopping), contributing to lower power consumption and longer operating hours. Regeneration also results in reduced heat generation and component wear, for long-term savings.

Adjustable auto-power off feature cuts power to the truck's electrical system if unit sits idle for a programmed period of time.

### RUGGED & DURABLE

The TX Series' rugged, unitized frame design delivers increased durability, and longer life. Contoured counterweight design enhances maneuverability. Flat face mast design features rolled steel channels, large cross sections, and thick inner rails for greater capacity retention. Side thrust rollers on the fork carriage are easily accessed for simple carriage adjustment.

Reliable, 6-disc wet-type brake system is fully enclosed within the drive unit, helping to eliminate debris and premature brake wear. Design extends brake life and lengthens service intervals.

### STANDARD EQUIPMENT

- 36/48-Volt, brushless AC drive, motor, lift and steering systems
- AC TECH motor controller system
- 3 pre-set performance modes (Economy, Performance, High)
- 1 Manual (custom) performance mode
- Secure, PIN access to personalized performance settings
- 5-mode regenerative braking (including controlled rollback)
- Full suspension, fold down seat with weight adjustment, operator restraint, and retractable seatbelt
- Multi-function LCD:
  - Hours meters (4), clock, calendar
  - Operator PIN security access
  - On-board diagnostics
  - Programmable service reminders
  - Speedometer and F/N/R transmission reminder
  - BDI with lift interrupt
  - Regeneration indicator
- On-board diagnostics, self-test and error code history
- Deck-mounted hydraulic controls
- Load sensing, on-demand hydraulic power steering
- Flex-logic acceleration control
- Operator Presence System with seat-actuated lift-interrupt system, return to neutral, seatbelt and parking brake warning buzzers
- Auto-Power off system
- Audible back-up warning alarm
- Infinitely adjustable steering wheel
- Small diameter steering wheel
- Overhead guard mounted headlights
- Rearview mirrors
- Rear work light
- Rear combination light package (turn, stop, backup)
- Four-piece overhead guard
- Hand-applied parking brake and button release, with warning buzzer
- Fully enclosed 6-disc wet brakes

### OPTIONAL EQUIPMENT\*

- Battery compartment rollers<sup>1</sup>
- Exclusive three-stage OptiView mast
- Deck-mounted fingertip control levers (single or separate levers)
- Auto-fork leveling<sup>2</sup>
- Clamp release interlock
- Hang-on and integral sidershifters
- Sidershifting fork positioner
- Extra forward tilt
- Quick disconnect
- Freezer package<sup>3</sup>
- 2" higher steering column
- Steering wheel with spinner knob
- Strobe light (various colors)
- Fire extinguisher
- Overhead guard modifications (drive-in racking, lowered design)
- Polycarbonate rain guard
- Magnetic convenience tray
- Solid pneumatic tires
- Standard, or polished and tapered, forks in a variety of lengths
- Single, or dual, IHR for all available mast types
- Front rubber motor cover

<sup>1</sup> Battery roller height from floor – Cushion tires: 7.25" (185mm); Pneumatic tires: 7.05" (180mm)

<sup>2</sup> Not available with fingertip control – single lever design

<sup>3</sup> Operate down to -31°F (-35°C) in ½ hour intervals

\* Some optional equipment may require extended lead time. Contact your Nissan Forklift by UniCarriers dealer for details.



**SS-TX 03-2015**  
Printed in U.S.A.

UniCarriers® is a registered trademark of UniCarriers Corporation. UniCarriers Americas Corporation reserves the right to make product changes relating to colors, equipment, specifications or available options without notice.

For more information, contact your authorized Nissan Forklift by UniCarriers representative.

