

WB Series "AC Power"



Walkie Pallet Trucks

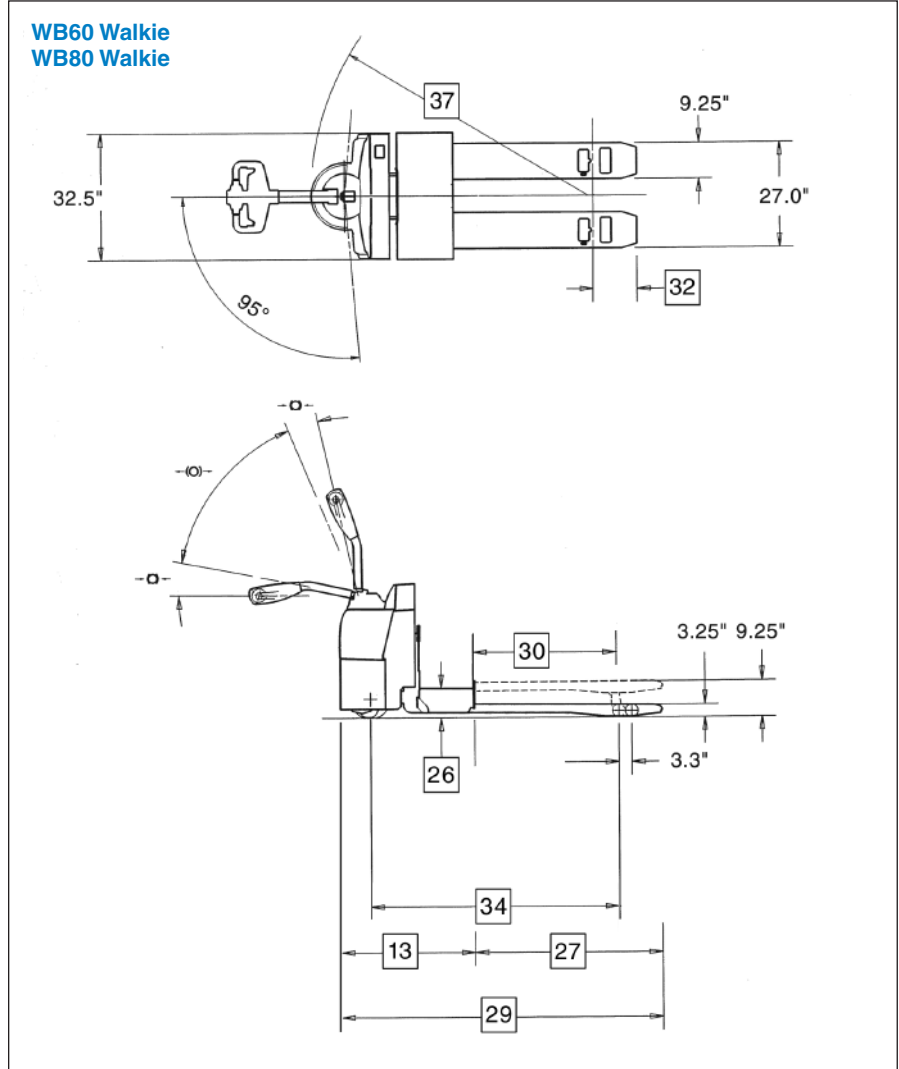


From the loading dock to the warehouse, from order picking in a freezer to processing work flow on the factory floor, TCM walkie and walkie/rider pallet trucks help your team work smarter, faster, safer and more productively.

- 6,000 lb./8,000 lb. single/double pallet models
- 5.2 hp AC drive motor (WB models)

Environmental: All components are designed to withstand wet, cold and/or freezer applications to -20° F (-28.9° C). The main controller features an ingress protection rating of IP65 against dust and moisture intrusion.

Dimensions



Options



Load backrests have slip-on or tilt-down designs available to facilitate battery change out. Tilt down includes EZ release feature.



Optional multi-function LCD digital display includes PIN codes to restrict truck access, selectable performance modes, battery discharge indicator and speedometer. It also offers on-board diagnostics, troubleshooting and adjustment.



Battery roller design provides easier battery change out. Includes removable side gates.

Main Truck Specifications

				TCM	TCM		
CHARACTERISTICS	1	Manufacturer's Name			TCM	TCM	1
	2	Model	Model designation		WB60	WB80	2
	3	Load Capacity	Rated capacity	lb (kg)	6000 (2720)	8000 (3630)	3
	4	Power Type	Electric		24 Volt	24 Volt	4
	5	Operator Type			Walkie	Walkie	5
	6	Tire Type	Drive tire		Solid Rubber	Solid Rubber	6
FORKS	7		Load wheels		Vulkollan Poly	Vulkollan Poly	7
	8	Wheels	Drive/load (x=driven)	number	1x / 2	1x / 2	8
	9	Fork Size	Outside spread	in (mm)	27 (685)	27 (685)	9
	10	Fork Height	Raised position	in (mm)	9.25 (235)	9.25 (235)	10
	11		Lowered position	in (mm)	3.25 (82.5)	3.25 (82.5)	11
	12	Individual Fork Width		in (mm)	9.25 (235)	9.25 (235)	12
DIMENSIONS	13	Overall Dimensions	Head length	in (mm)	34.7 (880)	34.7 (880)	13
	14	Width	Chassis	in (mm)	32.5 (825)	32.5 (825)	14
	15	Tires / Wheels	Drive tire - dia. x width	in (mm)	10 x 5 (254 x 127)	10 x 5 (254 x 127)	15
	16		Load wheels - dia. x width	in (mm)	3.25 x 6 (83 x 152)	3.25 x 6 (83 x 152)	16
SPEEDS	17	Speed - Travel	No load	mph (kph)	3.7 (5.9)	3.7 (5.9)	17
	18		Full load	mph (kph)	3.7 (5.9)	3.7 (5.9)	18
	19	Speed - Lift / Lower	No load	sec.	3.6 / 5.1	3.6 / 5.1	19
	20		Full load	sec.	5.1 / 4.8	6.1 / 4.7	20
BATTERY	21	Compartment Size ¹	Length x Width x Height	in (mm)	31.9 x 13.25 x 32 (810 x 335 x 815)		21
	22	Amp Hr Capacity	Max (6-hr)	Ah	750	750	22
	23	Weight	Min / Max	lb (kg)	800 / 1500 (365 / 680)	800 / 1500 (365 / 680)	23
	24	Lead Length	Position "B"	in (mm)	20 (508)	20 (508)	24
	25	Connector		type	SB-175 Red	SB-175 Red	25
	26	Battery Roller (Option)	Height from floor (forks lowered)	in (mm)	7.9 (200)	7.9 (200)	26

¹ Battery compartment size with adjustable retainers - 30.9 x 13.25 x 32 (785 x 335 x 815); w/optional rollers & side gates - 31.1 x 13.25 x 32 (790 x 335 x 815)

Aisle Specifications

				Single Pallet				Double Pallet			
		WB Walkie									
SPECIFICATIONS	27	Fork Length	Nominal	in	36	42	48	84	96	27	
	28		Actual	in (mm)	35.7 (910)	41.7 (1060)	47.7 (1210)	59.7 (1515)	95.7 (2430)	28	
	29	Overall Truck Length		in (mm)	70.4 (1790)	76.4 (1940)	82.4 (2095)	94.4 (2400)	130.4 (3315)	29	
	30	Face of Forks to Center of Load Wheel	Forks raised	in (mm)	24.4 (620)	30.4 (770)	36.4 (925)	48.4 (1230)	56.5 (1435)	30	
	31		Forks lowered	in (mm)	28.0 (710)	34.0 (865)	40.0 (1015)	52.0 (1320)	60.1 (1525)	31	
	32	Center of Load Wheel to Tip of Forks	Forks raised	in (mm)	11.3 (290)	11.3 (290)	11.3 (290)	11.3 (290)	39.2 (995)	32	
	33		Forks lowered	in (mm)	7.7 (195)	7.7 (195)	7.7 (195)	7.7 (195)	35.6 (905)	33	
	34	Wheelbase	Forks raised	in (mm)	51.6 (1310)	57.6 (1465)	63.6 (1615)	75.6 (1920)	83.5 (2120)	34	
	35		Forks lowered	in (mm)	55.2 (1405)	61.2 (1555)	67.2 (1710)	79.2 (2015)	87.1 (2215)	35	
	36	Grade Clearance	Forks raised w/pallet	%	36.4	32.5	29.4	24.8	22.4	36	
	37	Turning Radius			in (mm)	59.6 (1515)	65.5 (1665)	71.5 (1820)	83.5 (2125)	91.4 (2325)	37
	38	Right Angle Stacking Aisle ¹	40", 42", 48" Load Width		in (mm)	69.0 (1755)	75.0 (1905)	81.0 (2060)	93.0 (2365)	131.0 (3325)	38
	39	90° Equal Intersecting Aisle ¹	40" Load Width		in (mm)	57.5 (1460)	60.6 (1540)	63.8 (1620)	70.1 (1780)	76.8 (1950)	39
	40		42" Load Width		in (mm)	58.6 (1490)	61.7 (1570)	64.9 (1650)	71.2 (1810)	77.9 (1980)	40
	41		48" Load Width		in (mm)	61.9 (1575)	65.0 (1655)	68.2 (1735)	74.5 (1895)	81.2 (2065)	41
	42	Truck Weight	No load, without battery		lbs (kg)	985 (450)	1015 (460)	1040 (475)	1095 (495)	1215 (550)	42

¹ Add 6-8" for ease of operation. Includes 1" clearance on each side of load.



For information, contact your nearest TCM Dealer.
tcmforklifts.com

TCM America, Inc.
 107 McQueen St.
 West Columbia, SC 29172