

# TR100 "AC Power"



## Tow Tractor

When the application calls for the movement of wheeled loads or trailer trains, the TCM TR100 walkie/rider Tow Tractor brings five tons of pulling power into play to speed work around the facility.

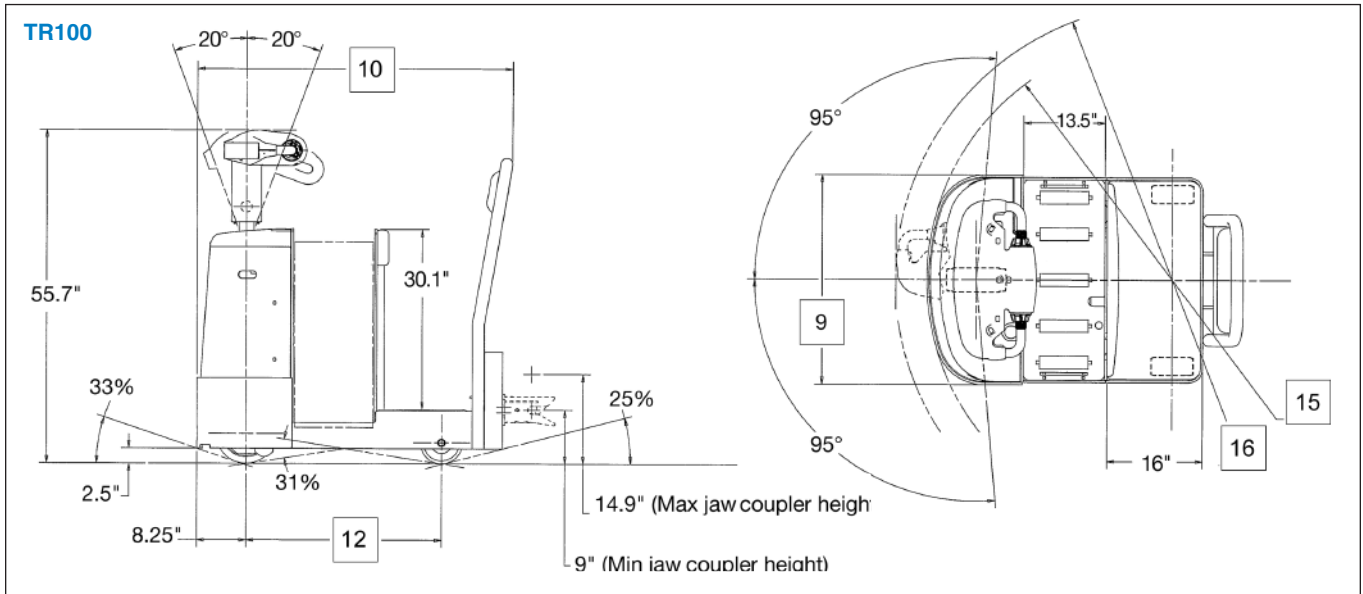
- 10,000 pound capacity
- Programmable speeds up to 8.7 mph
- Automatic jaw coupler with foot release

- Padded front wall and operator backrest
- 5.2 hp AC drive motor

**Environmental:** All components are designed to withstand wet, cold and/or freezer applications to -20° F (-28.9° C). The main controller features an ingress protection rating of IP65 against dust and moisture intrusion.



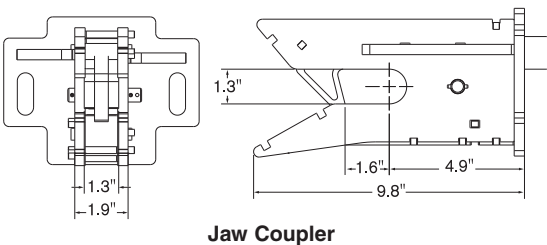
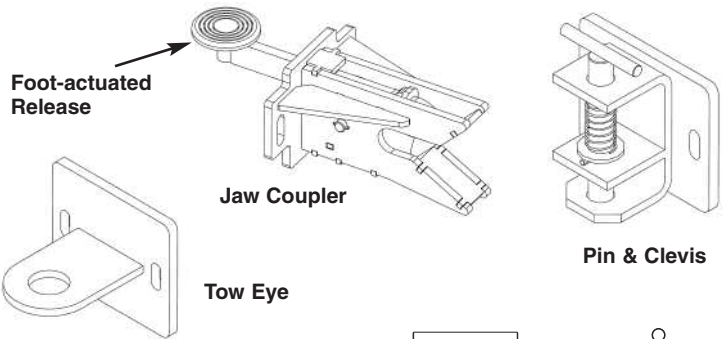
## Dimensions



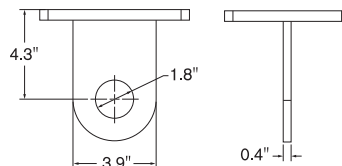
## Adjustable Coupler Plates

Coupler plate allows each type of coupler to be adjustable in 1" increments

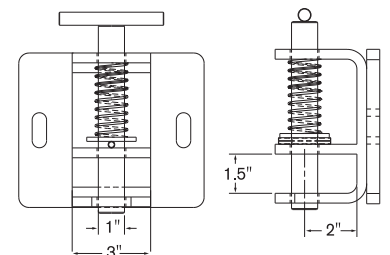
Type		Coupler Heights	
		Minimum	Maximum
Jaw Coupler	in (mm)	9.0 (228)	14.9 (380)
Tow Eye	in (mm)	9.3 (236)	15.3 (387)
Pin & Clevis	in (mm)	7.3 (186)	13.3 (337)



Jaw Coupler



Tow Eye



Pin and Clevis

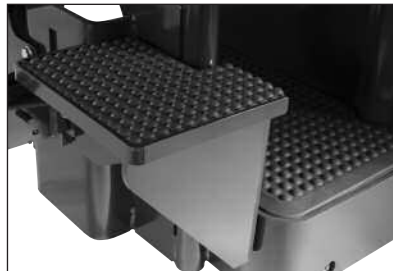
## Main Truck Specifications

CHARACTERISTICS	1	Manufacturer's Name		TCM	1	
	2	Model	Model designation	TR100	2	
	3	Rolling Load Capacity		10,000 (4535)	3	
	4	Power Type	Electric	24 Volt	4	
	5	Operator Type	Stand-up	Tow Tractor	5	
	6	Tire Type	Drive tire	Solid Rubber	6	
	7		Trail wheels	Poly	7	
	8	Wheels	Drive/trail (x=driven)	number	1x / 2	8
DIMENSIONS	9	Overall Dimensions	Width	in (mm)	35.1 (890)	9
	10		Length - less coupler	in (mm)	52.8 (1340)	10
	11		Height - to top of steerhead	in (mm)	55.7 (1415)	11
	12	Wheelbase		in (mm)	32.7 (830)	12
	13	Front Overhang		in (mm)	8.25 (210)	13
	14	Grade Clearance	Under chassis	%	31	14
	15	Turning Radius	Minimum outside	in (mm)	41.0 (1040)	15
	16		Including handle (at 90°)	in (mm)	46.3 (1175)	16
	17	Truck Weight	No load, without battery	lbs (kg)	1195 (545)	17
	18	Tires / Wheels	Drive tire - dia. x width	in (mm)	10 x 4 (254 x 102)	18
	19		Trail wheels - dia. x width	in (mm)	7 x 3 (178 x 76)	19
SPEEDS	20	Speed - Travel	No load	mph (kph)	9.1 (14.6)	20
	21		Full load	mph (kph)	5.6 (9.0)	21
	22	Drawbar Pull	Normal	lb (N)	225 (1000)	22
	23		Maximum	lb (N)	710 (3158)	23
BATTERY	24	Compartment Size <sup>1</sup>	Length x Width x Height	in (mm)	33.3 x 13.5 x 31.6 (850 x 345 x 805)	24
	25	Amp Hr Capacity	Max (6-hr)	Ah	840	25
	26	Weight	Min / Max	lb (kg)	855 / 1500 (390 / 680)	26
	27	Lead Length	Position "B"	in (mm)	20 (508)	27
	28	Connector		type	SB-175 Red	28
	29	Battery Roller (Option)	Height from floor	in (mm)	7.05 (180)	29

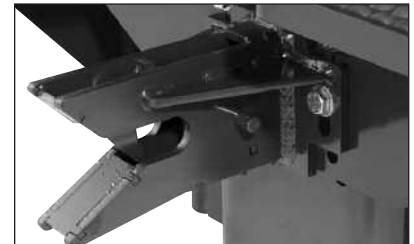
<sup>1</sup> Battery compartment size with optional rollers & side gates - 30.9 x 13.5 x 31.6 (785 x 345 x 805)



**Adjustable steerhead** includes two butterfly controls allowing thumb or fingertip actuation of travel and direction. (Standard)



**Rugged twin picking steps** designed with traction padding are available as optional equipment. (Option)



**Standard jaw coupler** has a robust design for secure towing. Its foot-operated release is conveniently located inside the operator compartment. (Standard)



**Optional multi-function LCD digital display** includes PIN codes to restrict truck access, selectable performance modes, battery discharge indicator and speedometer. It also offers on-board diagnostics, troubleshooting and adjustment. (Option)



**Optional convenience tray** keeps operator items organized. (Option)



**Battery roller** design provides easier battery change out. Includes removable side gates. (Option)



For information, contact your nearest TCM Dealer.  
tcmforklifts.com

TCM America, Inc.  
107 McQueen St.  
West Columbia, SC 29172