



**First Come, First Served!**

# LIQUIDATION BLOWOUT!!

**LIMITED QUANTITIES AVAILABLE**

**Battery Systems · Carousels · Carton Flow Rack · Conveyors · Floor Scrubbers · Lift Equipment  
Pallet Scales · Shelving · Stretch Wrappers · Pallet Rack · AND MORE!**

## RACKING

**OVER 22,000 BEAMS SOLD  
OVER 3,000 UPRIGHTS SOLD**

**ORDER  
DEADLINE  
JULY 17<sup>TH</sup>**

### DESCRIPTION

This is some of the nicest used pallet racking we've ever seen. It's all Interlake, with 3x3 column, 312" uprights, all 42" deep. Beams are 96" x 4" and 96" x 2.5". Everything is the "new style" teardrop. Wire decks are 42" x 46" channel style. This was a wire-guided facility, and they were very conscientious about replacing any damaged components.

### PRICING

168" X 6-1/2" INTERLAKE NEW STYLE STEP BEAM - 1-5/8" STEP	\$ 25.00	38% COST SAVINGS
96" X 2-1/2" INTERLAKE NEW STYLE STEP BEAM - 1-5/8" STEP (IL260)	<b>4000 LEFT!</b> \$ 14.00	41% COST SAVINGS
<del>96" X 4" INTERLAKE NEW STYLE STEP BEAM - 1-5/8" STEP - (IL485)</del>	<del>\$ 14.50</del>	<del>43% COST SAVINGS</del>
<del>42" X 312" INTERLAKE NEW STYLE UPRIGHT - 3" X 3" COLUMNS 3.5" x 5.25" base (1 hole), U75, Style "632"</del>	<del>\$ 124.00</del>	<del>40% COST SAVINGS</del>
42" X 312" INTERLAKE NEW STYLE UPRIGHT - 3" X 3" COLUMNS 3.5" x 8" base (2 holes)	<b>ONLY 120 LEFT!</b> \$ 126.00	40% COST SAVINGS
<del>10" ROW SPACER - 4 BOLT</del>	<del>\$ 2.25</del>	<del>40% COST SAVINGS</del>
<del>18" ROW SPACER - 4 BOLT</del>	<del>\$ 3.25</del>	<del>40% COST SAVINGS</del>
42" X 46" WIRE DECK - 3 CHANNEL - 38-1/8" CHANNEL LENGTH	<b>MORE AVAILABLE</b> \$ 12.00	39% COST SAVINGS
Column Protectors Yellow	STARTING AT \$ 12.00	
EOA Protectors	STARTING AT \$ 75.00	



To view the entire image collection of our liquidation inventory please visit:  
[www.kmhsystems.com/liquidation](http://www.kmhsystems.com/liquidation)

Pricing does not include design, freight, taxes, or assembly. FOB Iowa

# CARTON FLOW RACKS

**ORDER  
DEADLINE  
JULY 17<sup>TH</sup>**

## DESCRIPTION

There are two types of carton flow available. First is the "roller" style with pieces of gravity conveyor sitting in a channel. Each bay is built on an upright that is 87" tall, and is 60" deep with 5 levels of carton flow per bay. The roller tracks are 9.5" wide with .75" rollers, 2" OC. There are 60 bays @ 96" wide (7 roller tracks per level) and 4 bays @ 60" wide (4 roller tracks per level).

The "skate" style carton flow is also 5 levels high, and built on a 96" upright. It is 96" deep, with 31 sticks per bay (155 per section). There are 15 bays of this style available.

**DONT MISS OUT  
ON THESE ROLLERS**

## PRICING

96"W X 96"D CARTONFLOW BAY - 5 SHELVES / BAY	<b>ONLY 9 LEFT!</b>	\$ 974.00	<b>59% COST SAVINGS</b>
60"W X 58"D CARTONFLOW BAY - 5 SHELVES / BAY		\$ 609.00	<b>59% COST SAVINGS</b>
96"W X 58"D CARTONFLOW BAY - 5 SHELVES / BAY	<b>ONLY A FEW LEFT!</b>	\$ 812.00	<b>59% COST SAVINGS</b>



To view the entire image collection of our liquidation inventory please visit:  
[www.kmhsystems.com/liquidation](http://www.kmhsystems.com/liquidation)

Pricing does not include design, freight, taxes, or assembly. FOB Iowa

# SHELVING

**TAKE AN ADDITIONAL 30% OFF  
ALL ORDERS BEFORE JULY 20<sup>TH</sup>**

**ORDER  
DEADLINE  
JULY 20<sup>TH</sup>**

## DESCRIPTION

First, there is a small quantity of generic tan shelving, with 96" tall uprights. It is mostly 36" deep, with a small quantity at 26" deep. This BOM is available as individual components, as the rows are built in continuous runs.

The grey shelving is Lyon stuff in very nice shape. It is a combination of 72" and 96" tall, and 18" and 36" deep. Sections are 42", 60", 72", 84" and 96" long. It is listed and sold by sections, as each section of Lyon shelving is free-standing rather than hooked into the section next to it. There are roughly 500 sections of Lyon shelving available, all of it in very good shape.

## PRICING

Lyon 72" tall x 18" deep x 96" wide shelf sections (5 shelves)	\$ 171.00	58% COST SAVINGS
Lyon 72" tall x 18" deep x 84" wide shelf sections (5 shelves)	\$ 163.00	58% COST SAVINGS
Lyon 72" tall x 18" deep x 60" wide shelf sections (5 shelves)	\$ 146.00	58% COST SAVINGS
Lyon 72" tall x 18" deep x 42" wide shelf sections (5 shelves)	\$ 134.00	58% COST SAVINGS
Lyon 72" tall x 36" deep x 84" wide shelf sections (5 shelves)	\$ 191.00	58% COST SAVINGS
Lyon 72" tall x 36" deep x 60" wide shelf sections (5 shelves)	\$ 179.00	58% COST SAVINGS
Lyon 72" tall x 36" deep x 42" wide shelf sections (5 shelves)	\$ 166.00	58% COST SAVINGS
Lyon 96" tall x 18" deep x 96" wide shelf sections (5 shelves)	\$ 178.00	58% COST SAVINGS
Lyon 96" tall x 18" deep x 72" wide shelf sections (5 shelves)	\$ 172.00	58% COST SAVINGS
Lyon 96" tall x 18" deep x 60" wide shelf sections (5 shelves)	\$ 150.00	58% COST SAVINGS
Lyon 96" tall x 18" deep x 42" wide shelf sections (5 shelves)	\$ 137.00	58% COST SAVINGS
Lyon 96" tall x 36" deep x 72" wide shelf sections (5 shelves)	\$ 195.00	58% COST SAVINGS

**SELLING  
QUICK!**



To view the entire image collection of our liquidation inventory please visit:  
[www.kmhsystems.com/liquidation](http://www.kmhsystems.com/liquidation)

Pricing does not include design, freight, taxes, or assembly. FOB Iowa

# BATTERY SYSTEMS

## DESCRIPTION

The battery system is manufactured by MTC, model#8P-2-32-DS-V-SG, and serial#51928. It is set up for side extraction, with a total of 24 slots for larger batteries (or 48 for smaller). The chargers sit on a mezzanine above the batteries. The battery wash station is included. There is also a separate 2T crane set up for top extraction that is available separately.

## PRICING

Battery Changing / Charging System model V-SG	\$ 7,142.00	64% COST SAVINGS
Battery overhead crane 2 ton capacity	\$ 800.00	56% COST SAVINGS
Battery wash system	\$ 857.00	57% COST SAVINGS



To view the entire image collection of our liquidation inventory please visit:  
[www.kmhsystems.com/liquidation](http://www.kmhsystems.com/liquidation)

Pricing does not include design, freight, taxes, or assembly. FOB Iowa

# CONVEYORS

**ORDER  
DEADLINE  
JULY 17<sup>TH</sup>**

## DESCRIPTION

There is roughly one mile of 18" OAW Automotion conveyor in this facility. We will have an exact BOM available shortly. It is a combination of gravity, belt, belt/roller and zero accumulation, with inclines and declines. All motors, stops, eyes, controllers and other peripherals are included, along with a number of gates, ladders.

In addition, the system includes a very nice cardboard trash conveyor and two Hytrol BA extendible dock conveyors.

## PRICING

Belt Conveyors w/ Drives

**STARTING AT \$ 30.00 / LF**

Zero Pressure Conveyors w/ Drives

**ALMOST GONE! ACT NOW!**

**STARTING AT \$ 65.00 / FT**

Live Roller Conveyors w/ Drives

**STARTING AT \$ 38.00 / FT**

Gravity Conveyors **GOING FAST!**

**STARTING AT \$ 6.00 / FT**

**ASK ABOUT SORTATION CONVEYORS**



To view the entire image collection of our liquidation inventory please visit:  
[www.kmhsystems.com/liquidation](http://www.kmhsystems.com/liquidation)

Pricing does not include design, freight, taxes, or assembly. FOB Iowa

# CAROUSELS

**ORDER  
DEADLINE  
JULY 17<sup>TH</sup>**

## DESCRIPTION

The (5) carousels are White Systems/FKI Logistex units, WH models with bottom drive and AC power. They were initially installed in 2002. Each carousel has 60 “faces”, each of which holds 6 bins for a total of 360 pick locations per carousel, or 1,800 total. Each bin is 24.5” wide x 18” deep. 5 bins are 12” tall, one is 24”, but they just clip in so bin height can be easily adjusted. Overall height of the carousel is 8’. The “footprint” of each of the 5 carousels is roughly 6’ wide x 70’ long.

## PRICING

IJ White / Logistex Carousels (each)

**NOW ONLY! OBO! \$13,500.00 80% COST SAVINGS**

~~**\$19,500.00 70% COST SAVINGS**~~



To view the entire image collection of our liquidation inventory please visit:

[www.kmhsystems.com/liquidation](http://www.kmhsystems.com/liquidation)

Pricing does not include design, freight, taxes, or assembly. FOB Iowa

# EXTENDIBLE CONVEYOR

## DESCRIPTION

There are a total of (6) extendible conveyors available in this facility. There are (3) gravity powered, Nestaflex model 175 conveyors, with 18" OAW and 54" collapsed length. Another is a Best Flex, 19" OAW and 76" collapsed, the last (2) are Best Flex powered models, 19" OAW, with collapsed lengths of 168" and 240".

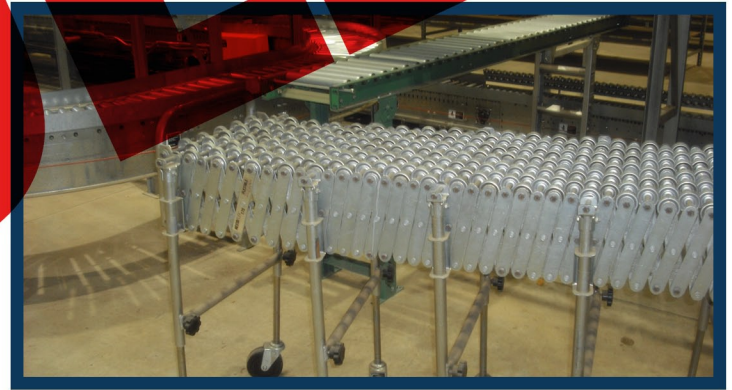
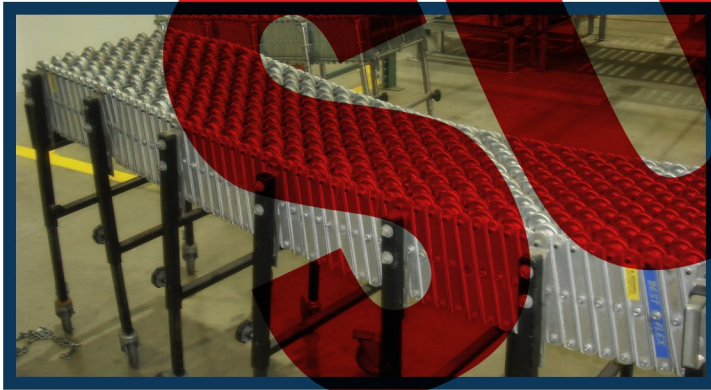
## PRICING

~~Best Flex Gravity~~

~~STARTING AT \$ 500.00~~

Best Flex Powered

STARTING AT \$ 5,043.00



To view the entire image collection of our liquidation inventory please visit:

[www.kmhsystems.com/liquidation](http://www.kmhsystems.com/liquidation)

Pricing does not include design, freight, taxes, or assembly. FOB Iowa

# LIFT EQUIPMENT

**ORDER  
DEADLINE  
JULY 17<sup>TH</sup>**

## DESCRIPTION

The lift equipment is older, but has been very well maintained. There are (7) man-up order selector trucks, (3) swing-reach (or turret) style trucks, (6) pallet jacks (mostly riders) and (2) Linde-Baker sit-down 3-wheel electric trucks. (10) narrow-aisle trucks.

## PRICING

Order Selectors **PRICE REDUCED TO \$4,995.00**

~~STARTING AT \$ 7,000.00~~

Turret Trucks **NOW STARTING AT \$25,000.00**

~~STARTING AT \$ 48,000.00~~

~~Pallet Jacks~~

~~STARTING AT \$ 1,900.00~~

~~Sit Down Electric Trucks~~

~~STARTING AT \$ 5,000.00~~



To view the entire image collection of our liquidation inventory please visit:  
[www.kmhsystems.com/liquidation](http://www.kmhsystems.com/liquidation)

Pricing does not include design, freight, taxes, or assembly. FOB Iowa

# MISC. EQUIPMENT

**ORDER  
DEADLINE  
JULY 17<sup>TH</sup>**

## DESCRIPTION

The Miscellaneous equipment available includes (9) rolling hoppers with fork pockets, (11) steel top workbenches, a Seal-A-Tron L-Bar sealer (model OLLBS-1319M, Serial 09069523), and a lift assist suction setup for zero gravity movement of cases.

## PRICING

Rolling Hoppers w/ Fork Pockets	<b>ONLY 2 LEFT!</b>	STARTING AT \$	250.00
<del>Steel Top Workbenches</del>		<del>STARTING AT \$</del>	<del>153.00</del>
<del>Seal-A-Tron L-Bar sealer 120v</del>		<del>STARTING AT \$</del>	<del>285.00</del>
Eagle Flammable Cabinet		STARTING AT \$	285.00



To view the entire image collection of our liquidation inventory please visit:

[www.kmhsystems.com/liquidation](http://www.kmhsystems.com/liquidation)

Pricing does not include design, freight, taxes, or assembly. FOB Iowa

# FLOOR SCALE

## DESCRIPTION

The floor scale is a Fairbanks 5000# capacity, model PLF-3400-F. It has a 3" profile and a 48" x 48" loading surface.

## PRICING

Pallet Scale

**\$ 495.00** **50% COST SAVINGS**



To view the entire image collection of our liquidation inventory please visit:  
[www.kmhsystems.com/liquidation](http://www.kmhsystems.com/liquidation)

Pricing does not include design, freight, taxes, or assembly. FOB Iowa

# STRETCH WRAPPERS

## DESCRIPTION

There are (3) stretch wrappers available. The first is an older Infra-Pak, Model CRAB2, serial#1791381, turntable style. The other two are Freedom 6512 models, with the rotating arm style.

## PRICING

Infrapak Semi-Automatic Stretch Wrapper

**\$ 3,500.00**

**61% COST SAVINGS**

Highlight Freedom 6512 Overhead automatic stretch wrapper

**\$ 5,642.00**

**62% COST SAVINGS**



To view the entire image collection of our liquidation inventory please visit:  
[www.kmhsystems.com/liquidation](http://www.kmhsystems.com/liquidation)

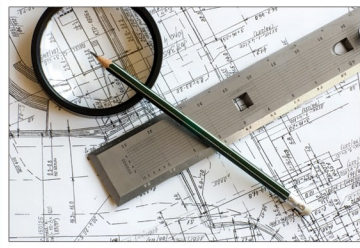
Pricing does not include design, freight, taxes, or assembly. FOB Iowa



**Material Handling Integration**



**Operational Audit**



**Engineering**



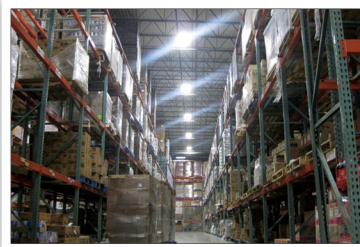
**Controls & Automation**



**Integrated Systems**



**Warehousing Solutions**



**Energy Efficient Lighting**



**Project Management**



**Support Services**

[www.kmhsystems.com](http://www.kmhsystems.com)

**Serving Industry For Over 35 Years!**

**Northern Indiana**  
South Bend, IN 46619  
143 South Olive St.  
ph: 800.876.5446

**Central Indiana**  
Logansport, IN 46947  
2741 South U.S. 35  
ph: 888.277.5647

**Northeast Indiana**  
Fort Wayne, IN 46803  
7020 SR. 930  
ph: 800.589.2188

**Middle Tennessee**  
Nashville, TN 37086  
181 Industrial Blvd.  
ph: 888.KMH.SYSTEMS

**Greater Chicago**  
Schererville, IN 46375  
1306 W. US Highway 30  
ph: 219.313.0426

**Southwest Ohio**  
Dayton, OH 45414  
6900 Poe Ave.  
ph: 800.962.3178

**Central Ohio**  
Columbus, OH 43219  
4449 Easton Way, 2nd Floor  
ph: 614.934.1755