



Building a better future

HYUNDAI LPG / GASOLINE FORKLIFT TRUCKS **Applied Tier 4 Engine**

North America Only

25L/30L/33L-7M
25G/30G/33G-7M



Hyundai Forklift introduces a new line of 7M Series dual fuel LPG forklift trucks that deliver excellent power and performance, making your business more profitable.



OPSS (Operator Presence Sensing System)

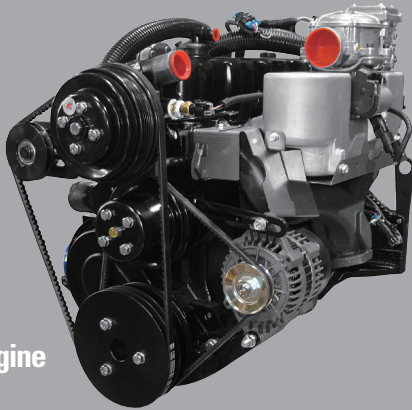
Activating the OPSS disables the mast tilting, lifting and lowering functions when the operator is not in the seated position.



Meet the new boss of the job site.

Smooth running, efficient and ergonomically designed, the Hyundai 25L(G)/30L(G)/33L(G)-7M series trucks are sure to meet your material handling needs.

65 PS / 2,400 rpm



Powerful Engine

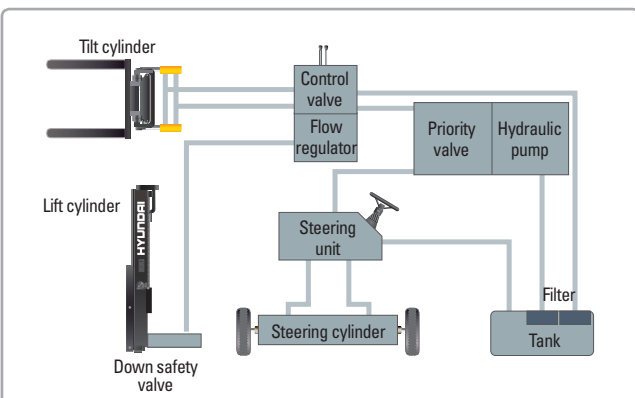
Powerful GM 3.0L Engine

The efficient GM 3.0L engine delivers unmatched performance, durability and additional value, and provides excellent fuel consumption and torque. (EPA / CARB Tier 4 Certified)

Fast, stable performance

The movable mast provides ideal operating conditions when loading and unloading.

When the truck is fully loaded, the Mast (Lift and Tilt) Lock System controls the mast lowering speed, providing increased safety on the job site.



State-of-the-art hydraulic system

Featuring a low-noise control valve, the large-capacity hydraulic system increases efficiency and durability.



Hydrostatic power steering

The hydraulic steering system ensures smooth and flexible steering and prevents overrun and kick-back.

High Power, Low Noise



■ Photo may include optional equipment.



Increased mast tilting angle

The mast tilting angle of 6 degrees forward and 10 degrees backward allows the operator to efficiently load and unload material.

Faster travel speed, improved gradeability

The powerful, high-output engine delivers improved acceleration and gradeability on the toughest terrain or slope.



Gradeability (loaded)

- 25L(G)-7M: 39.3%
- 30L(G)-7M: 32.1%
- 33L(G)-7M: 29.0%

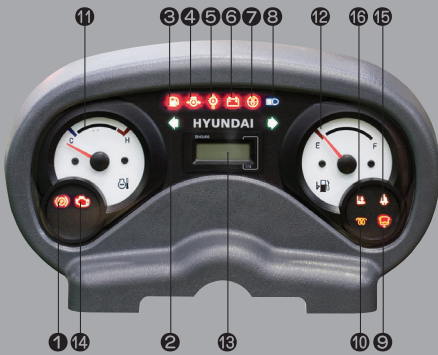
Travel speed (unloaded)

- 25L(G)-7M: 10.9 mph
- 30L(G)-7M: 11.5 mph
- 33L(G)-7M: 11.5 mph

Ergonomic, operator-friendly cab

The ergonomic cab relieves operator fatigue and increases operator efficiency.

User-friendly gauges, water-resistant monitor panel



- | | | |
|---|------------------------------------|---------------------|
| ① Parking brake lamp | ⑥ Battery charging warning lamp | ⑫ Fuel gauge |
| ② Directional indicators | ⑦ Air cleaner filter warning light | ⑬ Hour meter |
| ③ Fuel warning lamp | ⑧ Working light indicator | ⑭ Engine check lamp |
| ④ Engine oil warning lamp | ⑨ Water separator lamp | ⑮ Seat belt warning |
| ⑤ Transmission oil temperature warning lamp | ⑩ Pre-heater indicator | ⑯ OPS warning |
| | ⑪ Water temperature gauge | |



Optional grammer seat

The durable, adjustable ergonomic seat provides great operator comfort and safety.



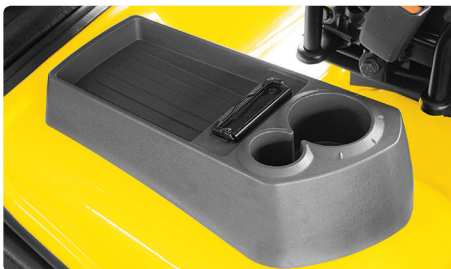
Enhanced operator visibility

A wider view mast allows the operator to work with increased safety and accuracy.



Ergonomically positioned pedals

The accelerator, brake and inching pedals are optimally positioned for improved operator convenience.



Cup holder and console box

The cab features additional storage for greater operator convenience.



Quick-response control levers

The controls deliver precise control with minimal operator effort.





Adjustable steering wheel

Featuring a horn button and a right-hand lever, the steering wheel can be adjusted by the operator for comfortable positioning.



Safe, easy shift lever

A single lever on the left side of the steering column provides fast, easy directional control. For added safety, the lever must be in the neutral position before the engine can be started.



Secondary horn

The secondary horn also controls headlamps.

Safety and durability built in



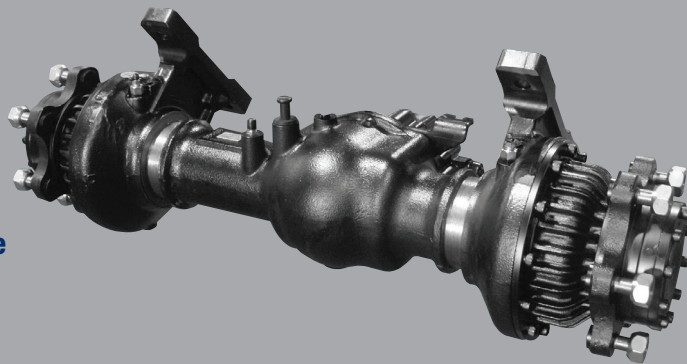
Strong overhead guard

The ISO 6055-compliant overhead safety guard provides added protection for the operator during hazardous jobs.



Parking brake

The ratchet type parking brake requires minimal effort for the operator to set.



Durable split-type drive axle

The bevel gear set and hub reduction axle smoothly deliver desired torque to the drive wheels with wet disc drive.



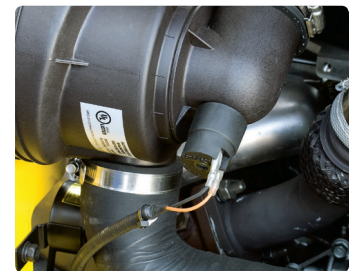
Large footboard and hand grip

The wide, durable step offers added convenience and safety when entering and exiting the truck.



Expansion bellows

The expansion bellows absorbs vibration, reduces noise generated by the exhaust system, and extends the system's life cycle.



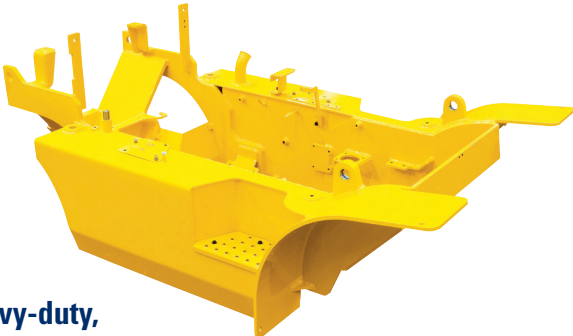
Electrically monitored air filter

The air cleaner sensor detects a restricted air filter and alerts the operator so the filter can be replaced to prevent damage.





■ Photo may include optional equipment.



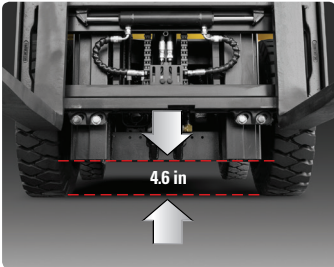
Heavy-duty, single unit frame

The solid frame ensures greater durability and safety.



Bright, protected headlights

The powerful head lights are positioned to provide exceptional visibility to the job site.

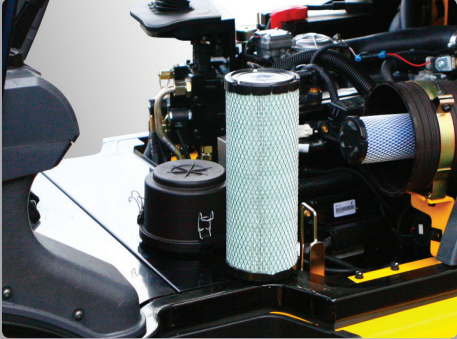


Ground clearance

The engine and transmission are assembled horizontally and positioned high in the frame to protect major components during operation on rugged surfaces.

Quick, easy service

Component parts are conveniently located and easily accessible for fast maintenance.

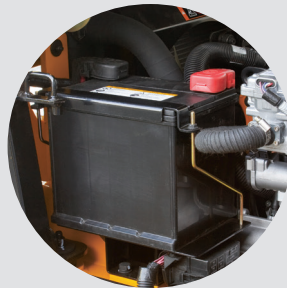


Quick-change air cleaner

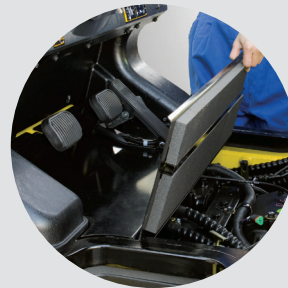
The 6-inch cyclone air filter is readily accessible for cleaning or replacement.



Easy access for daily fluids check



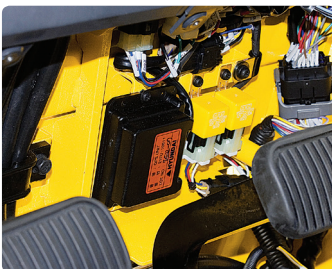
Rotational battery installation



One-touch, no-tool floor plate

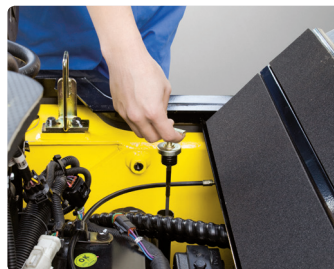


Removable side panels for ease of service



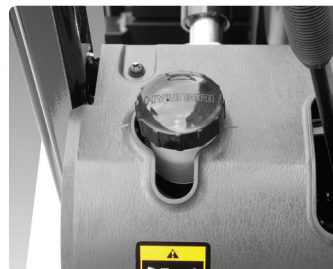
Improved electrical maintenance

Electrical parts are located in the dash board for effortless troubleshooting.



Easy oil checks

The oil level can be checked without any disassembly.



Brake fluid reservoir with level switch

When the minimum brake oil level is reached, the oil warning lamp on the instrument cluster is activated.



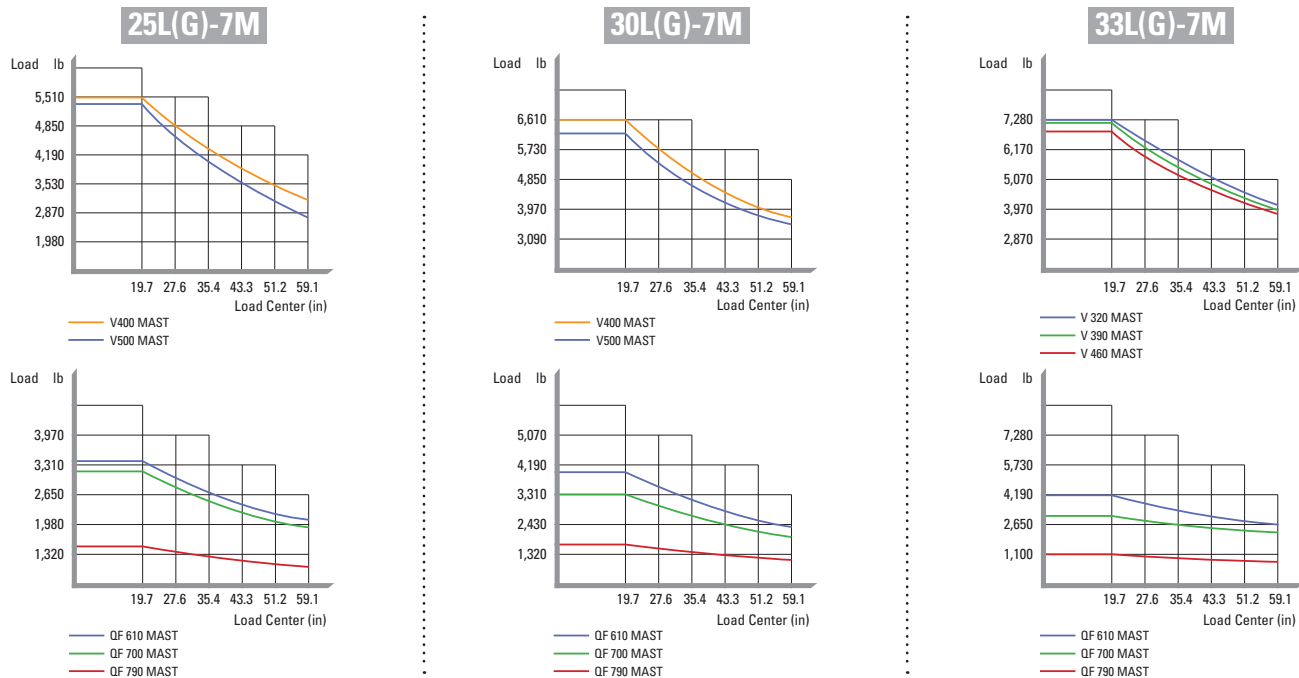
Compact fuse box for easy inspection

Mast Specification

Mast Type	Maximum Fork Height (in)		Overall Height Lowered (in)			Tilt Angle (deg)		Free Lift (in)						Load Capacity without Integral Side Shift 500mm LC (lb)						Load Capacity with Integral Side Shift 500mm LC (lb)						Truck Weight Unloaded (lb)							
								With Backrest			Without Backrest			Single Tire			Double Tire			Single Tire			Double Tire			Single Tire			Double Tire				
	25L(G)-7M	33L(G)-7M	25L(G)-7M	30L(G)-7M	33L(G)-7M	Fwd	Rev	25L(G)-7M	30L(G)-7M	33L(G)-7M	25L(G)-7M	30L(G)-7M	33L(G)-7M	25L(G)-7M	30L(G)-7M	33L(G)-7M	25L(G)-7M	30L(G)-7M	33L(G)-7M	25L(G)-7M	30L(G)-7M	33L(G)-7M	25L(G)-7M	30L(G)-7M	33L(G)-7M	25L(G)-7M	30L(G)-7M	33L(G)-7M	25L(G)-7M	30L(G)-7M	33L(G)-7M		
2-stage limited free lift	V300 / V290	118.1	115.4	79.7	80.3	80.3	6	10	6.1	6.1	6.1	6.1	6.1	6.1	6.1	5000	6000	6500	5000	6000	6500	5000	6000	6500	5000	6000	6500	8466	9206	9661	8767	9397	9875
	*V330 / V320	129.9	127.2	85.6	86.2	86.2	6	10	6.1	6.1	6.1	6.1	6.1	6.1	6.1	5000	6000	6500	5000	6000	6500	5000	6000	6500	5000	6000	6500	8510	9250	9713	8810	9441	9927
	V350 / V340	137.8	133.9	89.6	90.2	90.2	6	10	6.1	6.1	6.1	6.1	6.1	6.1	6.1	5000	6000	6500	5000	6000	6500	5000	6000	6500	5000	6000	6500	8547	9290	9748	8847	9481	9962
	V370 / V360	145.7	141.7	95.5	96.1	96.1	6	10	6.1	6.1	6.1	6.1	6.1	6.1	6.1	5000	6000	6500	5000	6000	6500	5000	6000	6500	5000	6000	6500	8596	9340	9801	8896	9531	10015
	V400 / V390	157.4	153.5	101.4	102.0	102.0	6	10	6.1	6.1	6.1	6.1	6.1	6.1	6.1	4930	6000	6500	5000	6000	6500	4750	5920	6500	4820	6000	6500	8662	9408	9871	8962	9599	10085
	V430 / V420	169.3	165.4	107.3	107.9	107.9	6	6	6.1	6.1	6.1	6.1	6.1	6.1	6.1	4850	5840	6500	5000	6000	6500	4670	5660	6500	4820	5950	6500	8776	9524	9989	9076	9715	10203
2-stage full free lift	V450 / V440	177.2	173.2	113.2	113.8	113.8	6	6	6.1	6.1	6.1	6.1	6.1	6.1	4740	5730	6500	4938	1900	6500	4560	5550	6500	4758	1720	6500	8825	9574	10041	9125	9765	10256	
	V470 / V460	185.0	181.1	117.1	117.7	117.7	6	6	6.1	6.1	6.1	6.1	6.1	6.1	4630	5510	6500	4850	5790	6500	4450	5330	6500	4670	5780	6500	8856	9608	10076	9157	9799	10290	
	V500 / V490	196.9	192.9	123.0	123.6	123.6	6	6	6.1	6.1	6.1	6.1	6.1	6.1	4400	4740	6500	4630	5680	6500	4220	4560	6460	4450	5620	6500	8905	9658	10129	9205	9849	10343	
	VF290	115.4	115.4	79.7	80.3	82.3	6	6	33.3	33.9	35.8	54.2	51.7	50.0	5000	6000	6500	5000	6000	6500	5000	6000	6500	5000	6000	6500	8568	9295	9759	8870	9485	9959	
	VF320	127.2	127.2	85.6	86.2	88.2	6	6	39.2	39.8	41.7	60.1	57.6	55.9	5000	6000	6500	5000	6000	6500	5000	6000	6500	5000	6000	6500	8641	9372	9837	8944	9562	10037	
	TF370 / TS370	145.7	145.7	71.9	72.4	74.4	6	6	25.4	26.0	28.0	46.3	43.9	42.1	4930	6000	6500	5000	6000	6500	4750	5950	6500	4820	6060	6500	8767	9536	10073	9069	9726	10273	
3-stage full free lift	TF400 / TS400	157.4	157.4	75.8	76.4	78.3	6	6	29.3	29.9	31.9	50.3	47.8	46.0	4820	5840	6500	4930	6000	6500	4640	5780	6500	4750	5890	6500	8820	9590	10121	9122	9780	10322	
	TF430 / TS430	169.3	169.3	79.7	80.3	82.3	6	6	33.3	33.9	35.8	54.2	51.7	50.0	4710	5730	6500	4850	5880	6500	4530	5670	6500	4670	5780	6500	8860	9638	10167	9162	9828	10388	
	TF450 / TS450	177.2	177.2	83.7	84.3	86.2	6	6	37.2	37.8	39.8	58.1	55.7	53.9	4540	5660	6500	4760	5760	6500	4360	5560	6430	4580	5670	6500	8908	9694	10216	9210	9884	10416	
	TF470 / TS470	185.0	185.0	85.6	86.2	88.2	6	6	39.2	39.8	41.7	60.1	57.6	55.9	4400	5400	6500	4670	5660	6500	4220	5220	6390	4490	5480	6500	8938	9726	10245	9240	9915	10446	
	TF500 / TS500	196.9	196.9	89.6	90.2	92.1	6	6	43.1	43.7	45.7	64.1	61.6	59.8	3520	4630	6480	4580	5510	6500	3340	4450	6260	4400	5330	6500	8987	9775	10295	9289	9965	10495	
	TF550 / TS550	216.5	216.5	97.4	98.0	100	6	6	51.0	51.6	53.5	71.9	69.4	67.7	2640	3040	4400	4400	5290	6500	2460	2860	4190	4220	5110	6390	9073	9872	10391	9375	10062	10592	
TF600 / TS600	236.2	236.2	105.3	105.9	107.9	6	6	58.9	59.4	61.4	79.8	77.3	75.6	1760	2020	2420	3520	4630	6390	1580	1840	2200	3340	4450	6170	9216	10026	10551	9518	10216	10752		
4-stage full free lift	QF610	240.7	240.7	85.0	85.6	87.6	3	3	39.3	37.6	41.1	59.5	57.0	57.0	3310	3730	4300	3810	4850	6240	3170	3550	4080	3520	4590	6060	9680	10351	10715	9980	10543	10883	
	QF660	260.4	260.4	92.9	93.5	95.5	3	3	47.1	47.0	49.0	67.4	64.9	64.9	3110	3530	4080	3590	4520	5950	2950	3350	3860	3420	4280	5730	9810	10494	10846	10110	10675	11015	
	QF700	276.2	276.2	96.8	97.4	99.4	3	3	51.1	51.0	53.0	71.3	68.9	68.9	2910	3110	3300	3510	4430	5690	2780	2950	3080	3310	4190	5420	9878	10550	10813	10178	10742	11082	
	QF745	293.9	293.9	102.8	103.3	105.3	3	3	57.0	56.9	58.9	77.2	74.8	74.8	2290	2510	2200	3310	4230	5380	2160	2360	1980	3150	3990	5160	9980	10651	11014	10280	10843	11183	
QF790	311.6	311.6	108.7	109.3	111.2	3	3	62.9	62.8	64.8	83.1	80.7	80.7	1480	1570	1210	2090	2290	2860	1370	1430	1100	1920	2070	2640	10200	10874	11236	10500	11066	11405		

*TS-Mast: Wide visible 3-stage full free lift mast with two free lift cylinders.

Load Capacity



Optional items

- CABIN & HEATER
- SIDE SHIFT / INTEGRAL SIDE SHIFT
- FORK (L x W x T) (in)

25L(G)-7M

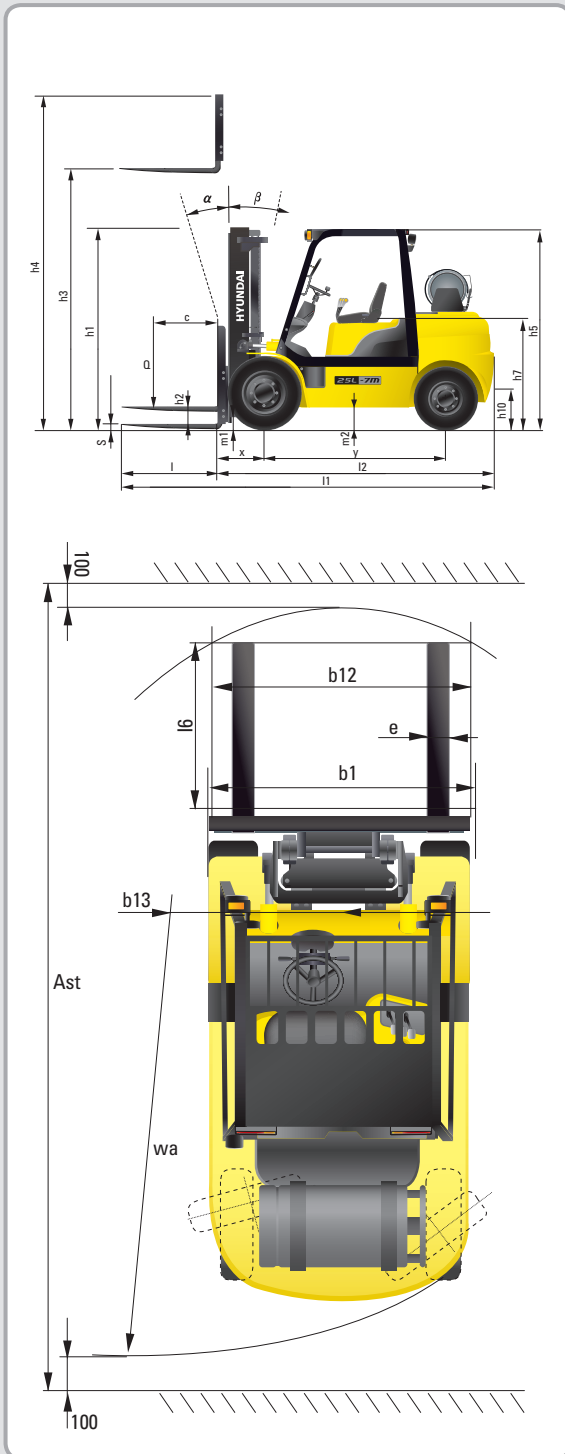
35.4 x 3.9 x 1.8	39.4 x 3.9 x 1.8	41.3 x 3.9 x 1.8
47.2 x 3.9 x 1.8	53.1 x 3.9 x 1.8	59.1 x 3.9 x 1.8
65.0 x 3.9 x 1.8	70.9 x 3.9 x 1.8	

30(G)/33L(G)-7M

- | | | |
|------------------|------------------|------------------|
| 35.4 x 4.8 x 1.8 | 41.3 x 4.8 x 1.8 | 45.3 x 4.8 x 1.8 |
| 47.2 x 4.8 x 1.8 | 53.1 x 4.8 x 1.8 | 59.1 x 4.8 x 1.8 |
| 65.0 x 4.8 x 1.8 | 70.9 x 4.8 x 1.8 | 77.6 x 4.8 x 1.8 |
| 83.5 x 4.8 x 1.8 | 90.6 x 4.8 x 1.8 | 94.5 x 4.8 x 1.8 |
- OVER SHOE (Extension Fork): 51.2, 59.1, 66.9, 70.9(in)
 - TILTING: 6/6°, 3/3°
 - TIRE: Non marking, Double

- SEAT: Pocket, Arm Rest, Hip Rest, FG 25, 26 Grammer Seat
- LPG CLAMP: Swing Out, Swing Down
- M.C.V: 4-Spool
- ATTACH PIPING: 3-spool piping, 4-spool piping
- MASTER SWITCH / HAZARD SWITCH
- BEACON LAMP / WORK LAMP
- MULTIPLE SPEED SETTING CONTROL SENSOR
- PRE CLEANER

Dimension



Specification

Identification				
1.1	Manufacturer		Hyundai	Hyundai
1.2	Manufacturer's type designation		25L (G) - 7M	30L (G) - 7M
1.3	Drive: electric (battery or mains), diesel, petrol, fuel gas or manual		LP / LP Gas	LP / LP Gas
1.4	Type of operation: Hand, Pedestrian, Standing, Seated or Order-picker		Seated	Seated
1.5	Load capacity / rated load	Q (lb)	5,000	6,000
1.6	Load center distance	c (in)	24	24
1.8	Load distance, center of drive axle to fork	x (in)	18.4	18.4
1.9	Wheelbase	y (in)	65	66.9
Weights				
2.1	Service weight	lb	9,328	9,224
2.2	Axle loading, loaded front / rear	lb	12,131 / 1,709	13,882 / 1,956
2.3	Axle loading, unloaded front / rear	lb	3,481 / 4,848	3,503 / 5,721
Wheels, Chassis				
3.1	Tires: Solid rubber, Superplastic, Pneumatic or Polyurethane		Pneumatic	Pneumatic
3.2	Tire size, front		7.0 x 12 - 12PR	8.15 x 15 - 14PR
3.3	Tire size, rear		6.0 x 9 - 10PR	6.5 x 10 - 12PR
3.5	Wheels, number front x rear (x = driven wheels)		2 x 2	2 x 2
3.6	Track width, front	b10 (in)	38	39.6
3.7	Track width, rear	b11 (in)	38.6	38.6
Basic Dimensions				
4.1	Mast / fork carriage tilt forward / backward (α / β)	degrees	6 / 10	6 / 10
4.2	Lowered mast height	h1 (in)	85.6	86.2
4.3	Free lift	h2 (in)	6.1	6.1
4.4	Lift height	h3 (in)	130	126
4.5	Extended mast height	h4 (in)	176.6	172.6
4.7	Overhead guard (cab) height	h5 (in)	85	85.8
4.8	Seat height / standing height	h7 (in)	43.7	44.5
4.12	Coupling height	h10 (in)	11.1	11.8
4.19	Overall length	l1 (in)	3,639	3,742
4.20	Length to face of forks	l2 (in)	102.6	106.0
4.21	Overall width	b1 (in)	1,160	1,230
4.22	Fork dimensions	s / e / l (in)	41.3 x 3.9 x 1.8	41.3 x 4.8 x 1.8
4.23	Fork carriage ISO 2328, class / type A,B		II / A	III / A
4.24	Fork-carriage width	b12 (in)	43.4	43.4
4.31	Ground clearance, loaded, under mast	m1 (in)	5.1	5.7
4.32	Ground clearance, center of wheelbase	m2 (in)	6.7	7.4
4.33	Right-angle stacking aisle width 40 x 48 in**	Ast (in)	156.7	160.1
4.34	Right-angle stacking aisle with 32 x 48 in**	Ast (in)	164.4	168
4.35	Turning radius	Wa (in)	91.1	94.4
4.36	Smallest pivot point distance	b13 (in)	28.1	28.8
Performance Data				
5.1	Travel speed, unloaded	mph	10.9	11.5
5.2	Lift speed, loaded / unloaded	fpm	118.1 / 120.1	114.1 / 120.1
5.3	Lowering speed, loaded / unloaded	fpm	98.4 / 88.6	98.4 / 88.6
5.5	Drawbar pull, loaded	lb	5,664	5,875
5.7	Gradient performance, loaded / unloaded	%	39.3 / 22.0	32.1 / 20.0
5.10	Service brake		Mechanic / Hydraulic	Mechanic / Hydraulic
Engine				
6.1	Engine manufacturer / type		GM 3.0L	GM 3.0L
6.2	Engine power acc. to ISO 1585	PS	65	65
6.3	Rated speed	1/min	2,400	2,400
6.4	No. of cylinders / cubic capacity	/cm ³	4 / 2,967	4 / 2,967
Other Details				
8.2	Type of drive control		Power Shift	Power Shift
8.3	Operating pressure	bar	220 / 165	220 / 165
8.4	Oil volume	ℓ	40	40
8.5	Noise	db(A)	80	80

*Gasoline type is dual fuel. * as follows: LP / LP Gas* to the three columns in line 1.3.

**Allow six inches for safe distance when turning and stacking.



Hyundai Construction Equipment Americas, Inc.
6100 ATLANTIC BOULEVARD, NORCROSS, GA 30071 U.S.A
TEL (1) 678-823-7777 / FAX (1) 678-823-7778

©2016 Hyundai Forklift. All Rights Reserved. Printed in U.S.A.