

WB Series "AC Power"



Walkie Pallet Trucks

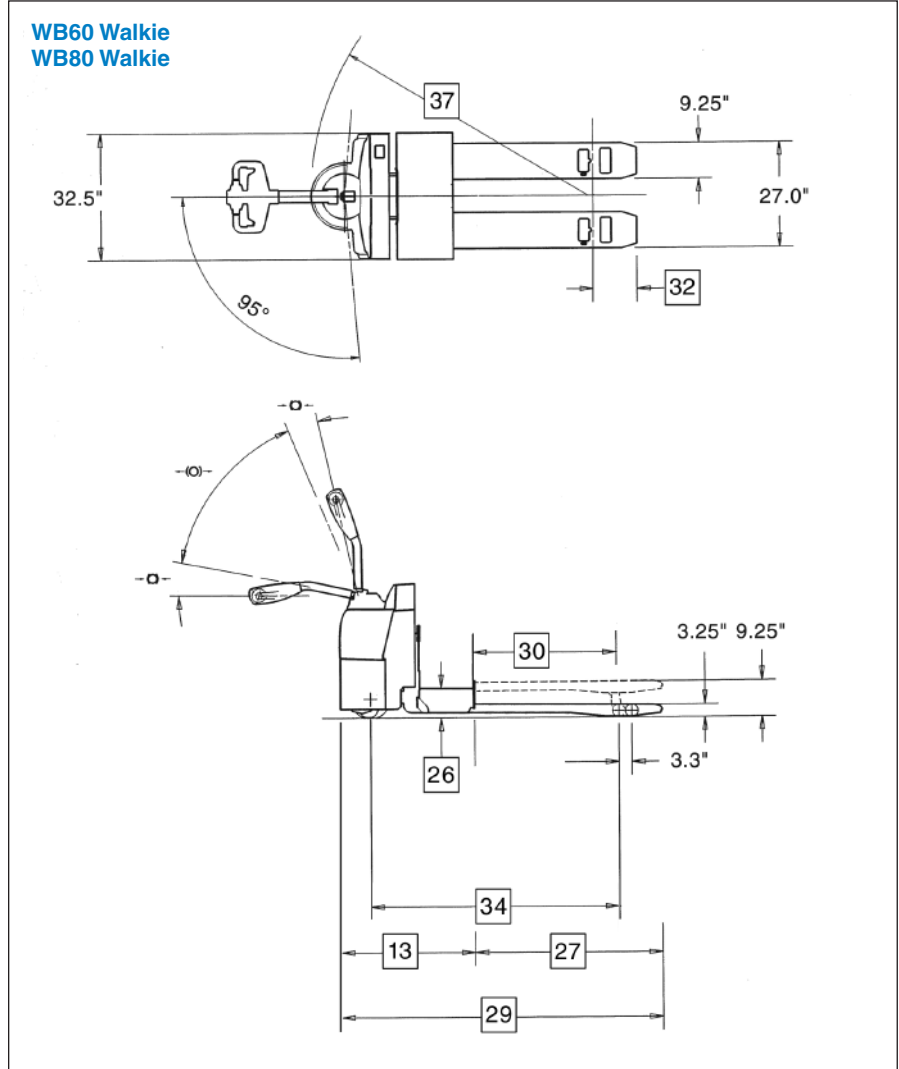


From the loading dock to the warehouse, from order picking in a freezer to processing work flow on the factory floor, TCM walkie and walkie/rider pallet trucks help your team work smarter, faster, safer and more productively.

- 6,000 lb./8,000 lb. single/double pallet models
- 5.2 hp AC drive motor (WB models)

Environmental: All components are designed to withstand wet, cold and/or freezer applications to -20° F (-28.9° C). The main controller features an ingress protection rating of IP65 against dust and moisture intrusion.

Dimensions



Options



Load backrests have slip-on or tilt-down designs available to facilitate battery change out. Tilt down includes EZ release feature.



Optional multi-function LCD digital display includes PIN codes to restrict truck access, selectable performance modes, battery discharge indicator and speedometer. It also offers on-board diagnostics, troubleshooting and adjustment.



Battery roller design provides easier battery change out. Includes removable side gates.

Main Truck Specifications

				TCM	TCM		
CHARACTERISTICS	1	Manufacturer's Name			TCM	TCM	1
	2	Model	Model designation		WB60	WB80	2
	3	Load Capacity	Rated capacity	lb (kg)	6000 (2720)	8000 (3630)	3
	4	Power Type	Electric		24 Volt	24 Volt	4
	5	Operator Type			Walkie	Walkie	5
	6	Tire Type	Drive tire		Solid Rubber	Solid Rubber	6
FORKS	7		Load wheels		Vulkollan Poly	Vulkollan Poly	7
	8	Wheels	Drive/load (x=driven)	number	1x / 2	1x / 2	8
	9	Fork Size	Outside spread	in (mm)	27 (685)	27 (685)	9
	10	Fork Height	Raised position	in (mm)	9.25 (235)	9.25 (235)	10
	11		Lowered position	in (mm)	3.25 (82.5)	3.25 (82.5)	11
	12	Individual Fork Width		in (mm)	9.25 (235)	9.25 (235)	12
DIMENSIONS	13	Overall Dimensions	Head length	in (mm)	34.7 (880)	34.7 (880)	13
	14	Width	Chassis	in (mm)	32.5 (825)	32.5 (825)	14
	15	Tires / Wheels	Drive tire - dia. x width	in (mm)	10 x 5 (254 x 127)	10 x 5 (254 x 127)	15
	16		Load wheels - dia. x width	in (mm)	3.25 x 6 (83 x 152)	3.25 x 6 (83 x 152)	16
SPEEDS	17	Speed - Travel	No load	mph (kph)	3.7 (5.9)	3.7 (5.9)	17
	18		Full load	mph (kph)	3.7 (5.9)	3.7 (5.9)	18
	19	Speed - Lift / Lower	No load	sec.	3.6 / 5.1	3.6 / 5.1	19
	20		Full load	sec.	5.1 / 4.8	6.1 / 4.7	20
BATTERY	21	Compartment Size ¹	Length x Width x Height	in (mm)	31.9 x 13.25 x 32 (810 x 335 x 815)		21
	22	Amp Hr Capacity	Max (6-hr)	Ah	750	750	22
	23	Weight	Min / Max	lb (kg)	800 / 1500 (365 / 680)	800 / 1500 (365 / 680)	23
	24	Lead Length	Position "B"	in (mm)	20 (508)	20 (508)	24
	25	Connector		type	SB-175 Red	SB-175 Red	25
	26	Battery Roller (Option)	Height from floor (forks lowered)	in (mm)	7.9 (200)	7.9 (200)	26

¹ Battery compartment size with adjustable retainers - 30.9 x 13.25 x 32 (785 x 335 x 815); w/optional rollers & side gates - 31.1 x 13.25 x 32 (790 x 335 x 815)

Aisle Specifications

				Single Pallet				Double Pallet			
		WB Walkie									
SPECIFICATIONS	27	Fork Length	Nominal	in	36	42	48	84	96	27	
	28		Actual	in (mm)	35.7 (910)	41.7 (1060)	47.7 (1210)	59.7 (1515)	95.7 (2430)	28	
	29	Overall Truck Length		in (mm)	70.4 (1790)	76.4 (1940)	82.4 (2095)	94.4 (2400)	130.4 (3315)	29	
	30	Face of Forks to Center of Load Wheel	Forks raised	in (mm)	24.4 (620)	30.4 (770)	36.4 (925)	48.4 (1230)	56.5 (1435)	30	
	31		Forks lowered	in (mm)	28.0 (710)	34.0 (865)	40.0 (1015)	52.0 (1320)	60.1 (1525)	31	
	32	Center of Load Wheel to Tip of Forks	Forks raised	in (mm)	11.3 (290)	11.3 (290)	11.3 (290)	11.3 (290)	39.2 (995)	32	
	33		Forks lowered	in (mm)	7.7 (195)	7.7 (195)	7.7 (195)	7.7 (195)	35.6 (905)	33	
	34	Wheelbase	Forks raised	in (mm)	51.6 (1310)	57.6 (1465)	63.6 (1615)	75.6 (1920)	83.5 (2120)	34	
	35		Forks lowered	in (mm)	55.2 (1405)	61.2 (1555)	67.2 (1710)	79.2 (2015)	87.1 (2215)	35	
	36	Grade Clearance	Forks raised w/pallet	%	36.4	32.5	29.4	24.8	22.4	36	
	37	Turning Radius			in (mm)	59.6 (1515)	65.5 (1665)	71.5 (1820)	83.5 (2125)	91.4 (2325)	37
	38	Right Angle Stacking Aisle ¹	40", 42", 48" Load Width		in (mm)	69.0 (1755)	75.0 (1905)	81.0 (2060)	93.0 (2365)	131.0 (3325)	38
	39	90° Equal Intersecting Aisle ¹	40" Load Width		in (mm)	57.5 (1460)	60.6 (1540)	63.8 (1620)	70.1 (1780)	76.8 (1950)	39
	40		42" Load Width		in (mm)	58.6 (1490)	61.7 (1570)	64.9 (1650)	71.2 (1810)	77.9 (1980)	40
	41		48" Load Width		in (mm)	61.9 (1575)	65.0 (1655)	68.2 (1735)	74.5 (1895)	81.2 (2065)	41
	42	Truck Weight	No load, without battery		lbs (kg)	985 (450)	1015 (460)	1040 (475)	1095 (495)	1215 (550)	42

¹ Add 6-8" for ease of operation. Includes 1" clearance on each side of load.



For information, contact your nearest TCM Dealer.
tcmforklifts.com

TCM America, Inc.
 107 McQueen St.
 West Columbia, SC 29172

Walkie/Rider Pallet Trucks

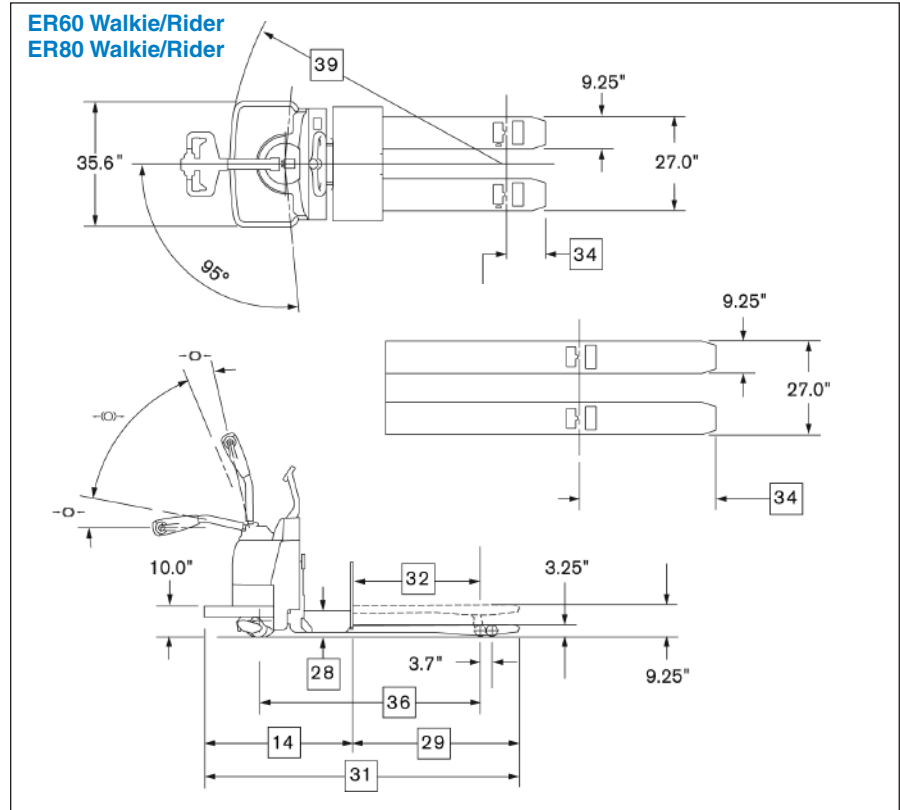


From the loading dock to the warehouse, from order picking in a freezer to processing work flow on the factory floor, TCM walkie and walkie/rider pallet trucks help your team work smarter, faster, safer and more productively.

- 6,000 lb./8,000 lb. single/double pallet models
- 5.2 hp AC drive motor (ER models)

Environmental: All components are designed to withstand wet, cold and/or freezer applications to -20° F (-28.9° C). The main controller features an ingress protection rating of IP65 against dust and moisture intrusion.

Dimensions



Options



Coast control allows truck to slowly coast to a complete stop, for more efficient order picking. Actuated manually using a toggle lever or by an electronic switch (shown).



Load backrests have a slip-on or tilt down design available to facilitate battery change out. Tilt down includes EZ release feature.



Optional multi-function LCD digital display includes PIN codes to restrict truck access, selectable performance modes, battery discharge indicator and speedometer. It also offers on-board diagnostics, troubleshooting and adjustment.



Magnetic convenience tray adheres to the top of the battery box. Includes shrink wrap holder and room for operator's tools.



Battery roller design provides easier battery change out. Includes removable side gates.



Sidetracker promotes greater productivity by allowing operator to walk beside truck while performing low level order picking!

*Must be ordered with manual Coast Control or electronic Click-n-Coast feature.

Main Truck Specifications

				TCM	TCM		
CHARACTERISTICS	1	Manufacturer's Name		TCM	TCM	1	
	2	Model	Model designation	ER60	ER80	2	
	3	Load Capacity	Rated capacity	lb (kg)	6000 (2720)	8000 (3630)	3
	4	Power Type	Electric		24 Volt	24 Volt	4
	5	Operator Type			Walkie / Rider	Walkie / Rider	5
	6	Tire Type	Drive tire		Solid Rubber	Solid Rubber	6
			Caster wheels		Poly	Poly	7
			Load wheels		Vulkollan Poly	Vulkollan Poly	8
	9	Wheels	Drive/caster/load (x=driven)	number	1x / 2 / 2	1x / 2 / 2	9
FORKS	10	Fork Size	Outside spread	in (mm)	27 (685)	27 (685)	10
	11	Fork Height	Raised position	in (mm)	9.25 (235)	9.25 (235)	11
			Lowered position	in (mm)	3.25 (82.5)	3.25 (82.5)	12
	13	Individual Fork Width		in (mm)	9.25 (235)	9.25 (235)	13
DIMENSIONS	14	Overall Dimensions	Head length	in (mm)	42.9 (1090)	42.9 (1090)	14
	15	Width	Chassis	in (mm)	35.6 (905)	35.6 (905)	15
	16	Tires / Wheels	Drive tire -dia. x width	in (mm)	10 x 5 (254 x 127)	10 x 5 (254 x 127)	16
			Caster wheels - dia. x width	in (mm)	5 x 2.5 (127 x 64)	5 x 2.5 (127 x 64)	17
18		Load wheels - dia. x width	in (mm)	3.25 x 6 (83 x 152)	3.25 x 6 (83 x 152)	18	
SPEEDS	19	Speed - Travel	No load	mph (kph)	9.1 (14.6)	9.1 (14.6)	19
			Full load	mph (kph)	6.6 (10.6)	6.1 (9.8)	20
	21	Speed - Lift / Lower	No load	sec.	3.6 / 5.1	3.6 / 5.1	21
			Full load	sec.	5.1 / 4.8	6.1 / 4.7	22
BATTERY	23	Compartment Size ¹	Length x Width x Height	in (mm)	31.9 x 13.25 x 32 (810 x 335 x 815)		23
	24	Amp Hr Capacity	Max (6-hr)	Ah	750	750	24
	25	Weight	Min / Max	lb (kg)	900 / 1500 (410 / 680)	900 / 1500 (410 / 680)	25
	26	Lead Length	Position "B"	in (mm)	20 (508)	20 (508)	26
	27	Connector		type	SB-175 Red	SB-175 Red	27
28	Battery Roller (Option)	Height from floor (forks lowered)	in (mm)	7.9 (200)	7.9 (200)	28	

¹ Battery compartment size with adjustable retainers - 30.9 x 13.25 x 32 (785 x 335 x 815); w/optional rollers & side gates - 31.1 x 13.25 x 32 (790 x 335 x 815)

Aisle Specifications

				Single Pallet			Double Pallet			
		ER Walkie/Rider Pallet								
SPECIFICATIONS	29	Fork Length	Nominal	in	36	42	48	84	96	29
	30		Actual	in (mm)	35.7 (910)	41.7 (1060)	47.7 (1210)	83.7 (2125)	95.7 (2430)	30
	31	Overall Truck Length		in (mm)	78.8 (2000)	84.8 (2155)	90.8 (2305)	126.8 (3220)	138.8 (3530)	31
	32	Face of Forks to Center of Load Wheel	Forks raised	in (mm)	24.4 (620)	30.4 (770)	36.4 (925)	56.5 (1435)	56.5 (1435)	32
			Forks lowered	in (mm)	28.0 (710)	34.0 (865)	40.0 (1015)	60.1 (1525)	60.1 (1525)	33
	34	Center of Load Wheel to Tip of Forks	Forks raised	in (mm)	11.3 (290)	11.3 (290)	11.3 (290)	27.2 (690)	39.2 (995)	34
			Forks lowered	in (mm)	7.7 (195)	7.7 (195)	7.7 (195)	23.6 (605)	35.6 (905)	35
	36	Wheelbase	Forks raised	in (mm)	51.6 (1310)	57.6 (1465)	63.6 (1615)	83.5 (2120)	83.5 (2120)	36
			Forks lowered	in (mm)	55.2 (1405)	61.2 (1555)	67.2 (1710)	87.1 (2215)	87.1 (2215)	37
	38	Grade Clearance	Forks raised w/pallet	%	36.4	32.5	29.4	22.4	22.4	38
	39	Turning Radius		in (mm)	68.0 (1730)	73.9 (1875)	79.7 (2025)	99.5 (2530)	99.5 (2530)	39
	40	Right Angle Stacking Aisle ¹	40", 42", 48" Load Width	in (mm)	78.0 (1980)	84.0 (2130)	90.0 (2285)	128.0 (3230)	140.0 (3540)	40
	41	90° Equal Intersecting Aisle ¹	40" Load Width	in (mm)	66.2 (1685)	69.3 (1760)	72.4 (1840)	83.6 (2125)	84.7 (2150)	41
			42" Load Width	in (mm)	67.2 (1710)	70.3 (1785)	73.4 (1865)	84.6 (2150)	85.8 (2180)	42
48" Load Width			in (mm)	70.3 (1785)	73.4 (1865)	76.2 (1945)	87.8 (2230)	88.9 (2260)	43	
44	Truck Weight	No load, without battery	lb (kg)	1110 (505)	1140 (515)	1165 (530)	1305 (590)	1340 (610)	44	

¹ Add 6-8" for ease of operation. Includes 1" clearance on each side of load.



For information, contact your nearest TCM Dealer.
tcmforklifts.com

TCM America, Inc.
 107 McQueen St.
 West Columbia, SC 29172

CR Series "AC Power"



Center Rider Trucks

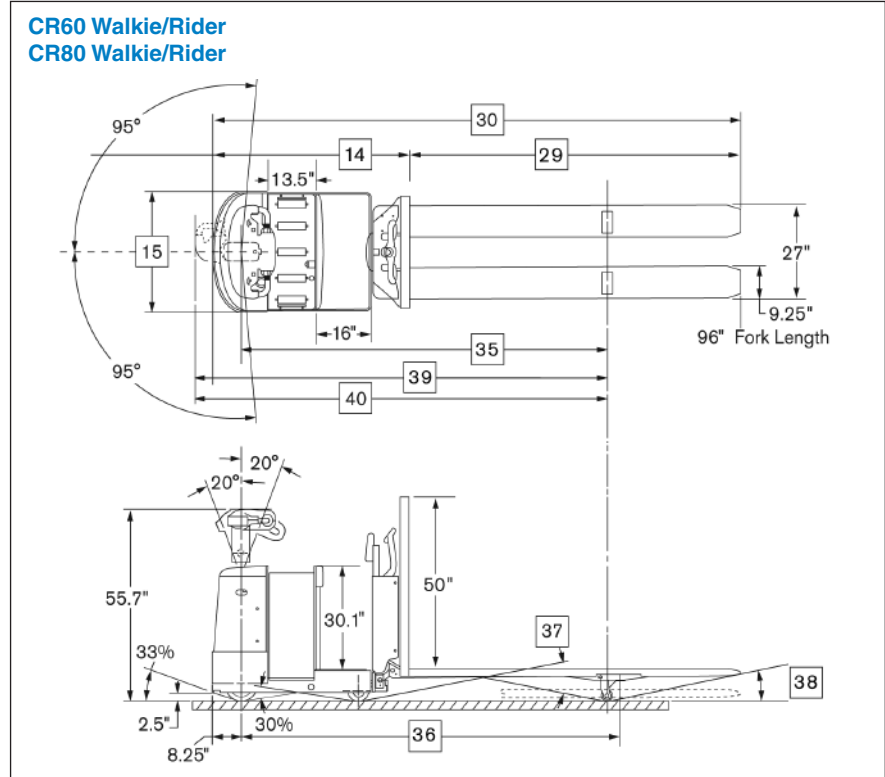


TCM center rider pallet handlers reduce cycle time in manufacturing and grocery warehouses by keeping both the operator and the load on the move.

- 6,000 lb./8,000 lb. single/double pallet models
- 5.2 hp AC drive motor

Environmental: All components are designed to withstand wet, cold and/or freezer applications to -20° F (-28.9° C). The main controller features an ingress protection rating of IP65 against dust and moisture intrusion.

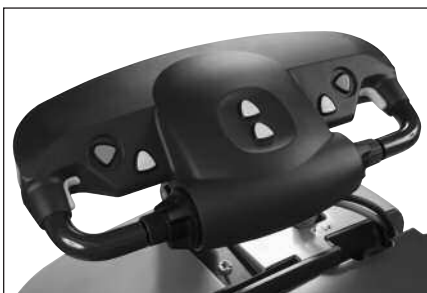
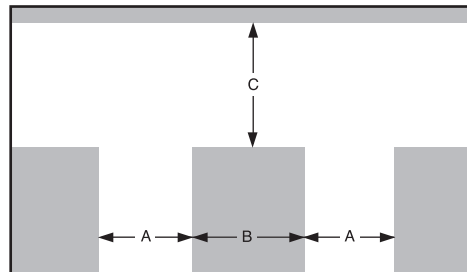
Dimensions



Intersecting Aisle Requirements

A	B	C
Working Aisle in (mm)	Rack Width ¹ in (mm)	Intersecting Aisle ² in (mm)
96 (2440)	102 (2590)	119 (3015)
102 (2590)	102 (2590)	111 (2810)
108 (2745)	102 (2590)	105 (2650)

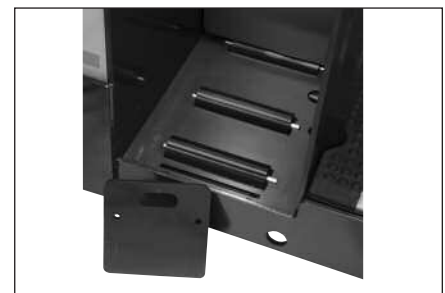
¹ Rack width calculated using 48" pallets and additional 6" needed for bracing.
² Minimum required aisle size to make a turn from one adjacent aisle to the next.



Adjustable steerhead includes two butterfly controls, allowing thumb or fingertip actuation of travel and direction. (Standard)



Optional multi-function LCD digital display includes PIN codes to restrict truck access, selectable performance modes, battery discharge indicator and speedometer. It also offers on-board diagnostics, trouble-shooting and adjustment. (Option)



Battery roller design provides easier battery change out. Includes removable side gates. (Option)

Main Truck Specifications

				TCM	TCM		
CHARACTERISTICS	1	Manufacturer's Name		TCM	TCM	1	
	2	Model	Model designation	CR60	CR80	2	
	3	Load Capacity	Rated capacity	lb (kg)	6000 (2720)	8000 (3630)	3
	4	Power Type	Electric		24 Volt	24 Volt	4
	5	Operator Type	Stand-up, center control		Walkie / Rider	Walkie / Rider	5
	6	Tire Type	Drive tire		Solid Rubber	Solid Rubber	6
	7		Caster wheels		Poly	Poly	7
	8		Load wheels		Vulkollan Poly	Vulkollan Poly	8
	9	Wheels	Drive/caster/load (x=driven)	number	1x / 2 / 2	1x / 2 / 2	9
FORKS	10	Fork Size	Outside spread	in (mm)	27 (685)	27 (685)	10
	11	Fork Height	Raised position	in (mm)	9.25 (235)	9.25 (235)	11
	12		Lowered position	in (mm)	3.25 (82.5)	3.25 (82.5)	12
	13	Individual Fork Width		in (mm)	9.25 (235)	9.25 (235)	13
DIMENSIONS	14	Head length	Forks raised	in (mm)	56.9 (1445)	56.9 (1445)	14
	15	Width	Chassis	in (mm)	35.1 (890)	35.1 (890)	15
	16	Tires / Wheels	Drive tire - dia. x width	in (mm)	10 x 4 (254 x 102)	10 x 4 (254 x 102)	16
	17		Caster wheels - dia. x width	in (mm)	6 x 3 (152 x 76)	6 x 3 (152 x 76)	17
	18		Load wheels - dia. x width	in (mm)	3.25 x 6 (83 x 152)	3.25 x 6 (83 x 152)	18
SPEEDS	19	Speed -Travel	No load	mph (kph)	9.0 (14.5)	9.0 (14.5)	19
	20		Full load	mph (kph)	7.2 (11.6)	6.2 (10.0)	20
	21	Speed -Lift / Lower	No load	sec.	3.0 / 4.7	3.0 / 4.7	21
	22		Full load	sec.	4.2 / 4.4	4.6 / 4.3	22
BATTERY	23	Compartment Size ¹	Length x Width x Height	in (mm)	33.3 x 13.5 x 31.6 (850 x 345 x 805)		23
	24	Amp Hr Capacity	Max (6-hr)	Ah	840	840	24
	25	Weight	Min / Max	lb (kg)	855 / 1550 (390 / 700)	855 / 1550 (390 / 700)	25
	26	Lead Length	Position "B"	in (mm)	20 (508)	20 (508)	26
	27	Connector		type	SB-175 Red	SB-175 Red	27
	28	Battery Roller (Option)	Height from floor (forks lowered)	in (mm)	7.05 (180)	7.05 (180)	28

¹Battery compartment size with optional rollers & side gates - 30.9 x 13.5 x 31.6 (785 x 345 x 805)

Aisle Specifications

CR Center-Control, Walkie/Rider Pallet				Single Pallet	Double Pallet			
SPECIFICATIONS	29	Fork Length	Nominal	in (mm)	48 (1220)	84 (2135)	96 (2440)	29
	30	Overall Truck Length	Forks raised	in (mm)	104.9 (2665)	140.9 (3580)	152.9 (3885)	30
	31	Face of Forks to Center of Load Wheel	Forks raised	in (mm)	36.4 (925)	57.6 (1465)	57.6 (1465)	31
	32		Forks lowered	in (mm)	40.3 (1025)	61.3 (1560)	61.3 (1560)	32
	33	Center of Load Wheel to Tip of Forks	Forks raised	in (mm)	11.4 (290)	26.4 (670)	38.4 (975)	33
	34		Forks lowered	in (mm)	7.7 (195)	22.7 (575)	34.7 (880)	34
	35	Wheelbase	Forks raised	in (mm)	85.3 (2165)	106.2 (2700)	106.2 (2700)	35
	36		Forks lowered	in (mm)	89.0 (2260)	109.9 (2795)	109.9 (2795)	36
	37	Grade Clearance	Between caster & load wheels	%	57	40	40	37
	38		From load wheel to fork tip	%	70	30	20	38
	39	Turning Radius		in (mm)	93.5 (2375)	114.5 (2910)	114.5 (2910)	39
	40		Including handle (at 90°)	in (mm)	98.7 (2510)	119.7 (3040)	119.7 (3040)	40
	41	Right Angle Stacking Aisle ¹	40", 42" or 48" load width	in (mm)	108 (2745)	146 (3710)	158 (4015)	41
	42	90° Equal Intersecting Aisle ¹	40" Load Width	in (mm)	78 (1980)	89 (2260)	91 (2315)	42
	43		42" Load Width	in (mm)	79 (2010)	91 (2315)	92 (2340)	43
44	48" Load Width		in (mm)	82 (2085)	94 (2390)	95 (2415)	44	
45	Truck Weight	No load, without battery	lbs (kg)	1750 (795)	1895 (860)	1930 (880)	45	

¹Add 6-8 for ease of operation. Includes 1" clearance on each side of load.

Fork Length Selection Guide

Contact your TCM Forklift sales representative for details about load wheel location or fork length requirements for your application.

Single Pallet Handling: Size the forks to the exact pallet length. The load wheels will drop in the second opening of the pallet.

Double Pallet Handling: Size the forks to the exact pallet combination length. The load wheels should be specified to drop in the first opening of the second pallet to reduce the turning radius of the truck.



For information, contact your nearest TCM Dealer.
tcmforklifts.com

TCM America, Inc.
107 McQueen St.
West Columbia, SC 29172