

NISSAN
FORKLIFT

SRX Platinum Series

Rider Reach, Rider Double Reach / **AC-Powered Models**

3,000/3,500/4,500 lb.
Capacities



Mast Specifications

SRX35N

Mast Type	Mast Name	OHG Height	Maximum Fork Height	Overall Height			Free Lift		Tilt Angle	
				MFH (TOF)	Lowered	Fully Extended		FL		Fwd/ Bkwd
					OHL	With 48" LBR	Without LBR	With 48" LBR	Without LBR	
		in (mm)	in (mm)	in (mm)	in (mm)	in (mm)	in (mm)	in (mm)	deg	
THREE STAGE (Full Free)	3F198	93.5 (2375)	198 (5030)	89 (2260)	247.8 (6295)	234.7 (5960)	41.0 (1040)	54.1 (1375)	3/4	
	3F210		210 (5335)	95 (2415)	260.3 (6615)	247.2 (6280)	47.0 (1195)	60.1 (1530)		
	3F240		240 (6095)	107 (2720)	290.4 (7380)	277.3 (7045)	59.0 (1500)	72.1 (1830)		
	3F270		270 (6860)	119 (3025)	320.5 (8140)	307.4 (7810)	71.0 (1805)	84.1 (2140)		

SRX45N, SRX45LN

Mast Type	Mast Name	OHG Height	Maximum Fork Height	Overall Height			Free Lift		Tilt Angle	
				MFH (TOF)	Lowered	Fully Extended		FL		Fwd/ Bkwd
					OHL	With 48" LBR	Without LBR	With 48" LBR	Without LBR	
		in	in	in	in	in	in	in	deg	
THREE STAGE (Full Free)	3F198	93.5 (2375)	198 (5030)	89 (2260)	247.8 (6295)	234.7 (5960)	41.2 (1045)	54.3 (1380)	3/4	
	3F210		210 (5335)	95 (2415)	260.3 (6615)	247.2 (6280)	47.2 (1200)	60.3 (1535)		
	3F240		240 (6095)	107 (2720)	290.4 (7380)	277.3 (7045)	59.2 (1505)	72.3 (1840)		
	3F258		258 (6555)	113 (2870)	308.4 (7835)	295.3 (7500)	65.2 (1655)	78.3 (1990)		
	3F270		270 (6860)	119 (3025)	320.5 (8140)	307.4 (7810)	71.2 (1810)	84.3 (2145)		
	3F300		300 (7620)	131 (3330)	350.6 (8905)	337.5 (8570)	83.2 (2115)	96.3 (2450)		
	3F330		330 (8380)	149 (3785)	380.5 (9665)	367.4 (9335)	101.2 (2570)	114.3 (2905)		

SRX30ND, SRX30LND

Mast Type	Mast Name	OHG Height	Maximum Fork Height	Overall Height			Free Lift		Tilt Angle	
				MFH (TOF)	Lowered	Fully Extended		FL		Fwd/ Bkwd
					OHL	With 48" LBR	Without LBR	With 48" LBR	Without LBR	
		in	in	in	in	in	in	in	deg	
THREE STAGE (Full Free)	3F198	93.5 (2375)	198 (5030)	89 (2260)	247.8 (6295)	234.7 (5960)	41.0 (1040)	54.1 (1375)	3/4	
	3F210		210 (5335)	95 (2415)	260.3 (6615)	247.2 (6280)	47.0 (1195)	60.1 (1530)		
	3F240		240 (6095)	107 (2720)	290.4 (7380)	277.3 (7045)	59.0 (1500)	72.1 (1835)		
	3F258		258 (6555)	113 (2870)	308.4 (7835)	295.3 (7500)	65.0 (1650)	78.1 (1985)		
	3F270		270 (6860)	119 (3025)	320.5 (8140)	307.4 (7810)	71.0 (1805)	84.1 (2140)		
	3F300		300 (7620)	131 (3330)	350.6 (8905)	337.5 (8570)	83.0 (2110)	96.1 (2445)		
	3F330		330 (8380)	149 (3785)	380.5 (9665)	367.4 (9335)	101.0 (2565)	114.1 (2900)		

Outrigger (Base Leg) Requirements

SRX35N, SRX45N, SRX45LN

Base Leg Type	Load Wheel	Outriggers (Base Legs)				
		Inner Dimension (I.D.)				Outside Dimension
		Min. I.D.			Max. I.D.	Add to I.D.
No S/S	2x2 S/S	4x4 S/S				
Standard	5"d x 4"w Tandem	33	33	37	50	+ 11"
Single Load Wheel	10.5"d x 4"w Single	35	39	43	50	+ 11"
Narrow Profile	5"d x 3"w Tandem	33 ¹	33 ¹	37 ²	50	+ 9"
Low Profile	4"d x 3"w Tandem	33 ¹	33 ¹	37 ²	50	+ 9"

¹I.D. Min.=35" with 3F330 Mast

²I.D. Min.=38" with 3F330 Mast

SRX30ND, SRX30LND

Base Leg Type	Load Wheel	Outriggers (Base Legs)				
		Inner Dimension (I.D.)				Outside Dimension
		Min. I.D.			Max. I.D.	Add to I.D.
No S/S	2x2 S/S	4x4 S/S				
Standard	5"d x 4"w Tandem	33	33	37	50	+ 11"
Single Load Wheel	10.5"d x 4"w Single	35	39	43	50	+ 11"
Narrow Profile	5"d x 3"w Tandem	35	35	38	50	+ 9"
Low Profile	4"d x 3"w Tandem	35	35	38	50	+ 9"

3,000/3,500/4,000 lb. capacities

Right Angle Stacking Aisle Requirements

SRX35N

Load Length	Load Width					
	30"	36"	40"	42"	44"	48"
30"	85 (2160)	85 (2160)	85 (2160)	85 (2160)	85 (2160)	85 (2160)
36"	87 (2210)	86 (2185)	85 (2160)	85 (2160)	84 (2135)	83 (2110)
40"	92 (2335)	91 (2310)	91 (2310)	91 (2310)	90 (2285)	90 (2285)
42"	94 (2390)	94 (2390)	93 (2360)	93 (2360)	93 (2360)	93 (2360)
44"	96 (2440)	96 (2440)	96 (2440)	95 (2415)	95 (2415)	95 (2415)
48"	101 (2565)	100 (2540)	100 (2540)	100 (2540)	100 (2540)	100 (2540)

42" I.D. Base Legs, 5x4 Load Wheels, 4" Clearance Between Loads.

Add min. 6" clearance for ease of operation.

SRX45N

Load Length	Load Width					
	30"	36"	40"	42"	44"	48"
30"	86 (2185)	86 (2185)	86 (2185)	86 (2185)	86 (2185)	86 (2185)
36"	88 (2235)	87 (2210)	87 (2210)	86 (2185)	86 (2185)	85 (2160)
40"	93 (2360)	93 (2360)	92 (2335)	92 (2335)	92 (2335)	91 (2310)
42"	96 (2440)	95 (2415)	95 (2415)	95 (2415)	94 (2390)	94 (2390)
48"	102 (2590)	102 (2590)	102 (2590)	101 (2565)	101 (2565)	101 (2565)
60"	115 (2920)	115 (2920)	114 (2895)	114 (2895)	114 (2895)	114 (2895)

42" I.D. Base Legs, 5x4 Load Wheels, 4" Clearance Between Loads.

Add min. 6" clearance for ease of operation.

SRX45LN

Load Length	Load Width					
	30"	36"	40"	42"	44"	48"
30"	90 (2285)	90 (2285)	90 (2285)	90 (2285)	90 (2285)	90 (2285)
36"	93 (2360)	92 (2335)	91 (2310)	91 (2310)	90 (2285)	89 (2260)
40"	98 (2490)	97 (2465)	97 (2465)	96 (2440)	96 (2440)	96 (2440)
42"	100 (2540)	99 (2515)	99 (2515)	99 (2515)	99 (2515)	98 (2490)
48"	107 (2720)	106 (2690)	106 (2690)	106 (2690)	106 (2690)	105 (2665)
60"	119 (3025)	119 (3025)	119 (3025)	119 (3025)	119 (3025)	118 (2995)

42" I.D. Base Legs, 5x4 Load Wheels, 4" Clearance Between Loads.

Add min. 6" clearance for ease of operation.

SRX30ND

Load Length	Load Width					
	30"	36"	40"	42"	44"	48"
30"	88 (2235)	88 (2235)	88 (2235)	88 (2235)	88 (2235)	88 (2235)
36"	96 (2440)	95 (2415)	95 (2415)	95 (2415)	94 (2390)	94 (2390)
40"	100 (2540)	100 (2540)	100 (2540)	99 (2515)	99 (2515)	99 (2515)
42"	103 (2615)	102 (2590)	102 (2590)	102 (2590)	101 (2565)	101 (2565)
48"	109 (2770)	109 (2770)	108 (2745)	108 (2745)	108 (2745)	108 (2745)
60"	121 (3075)	121 (3075)	121 (3075)	121 (3075)	121 (3075)	121 (3075)

42" I.D. Base Legs, 5x4 Load Wheels, 4" Clearance Between Loads.

Add min. 6" clearance for ease of operation.

SRX30LND

Load Length	Load Width					
	30"	36"	40"	42"	44"	48"
30"	92 (2335)	92 (2335)	92 (2335)	92 (2335)	92 (2335)	92 (2335)
36"	100 (2540)	100 (2540)	99 (2515)	99 (2515)	99 (2515)	98 (2490)
40"	105 (2665)	104 (2640)	104 (2640)	104 (2640)	104 (2640)	103 (2615)
42"	107 (2720)	106 (2690)	106 (2690)	106 (2690)	106 (2690)	106 (2690)
48"	113 (2870)	113 (2870)	113 (2870)	113 (2870)	113 (2870)	112 (2845)
60"	126 (3200)	126 (3200)	125 (3175)	125 (3175)	125 (3175)	125 (3175)

42" I.D. Base Legs, 5x4 Load Wheels, 4" Clearance Between Loads.

Add min. 6" clearance for ease of operation.

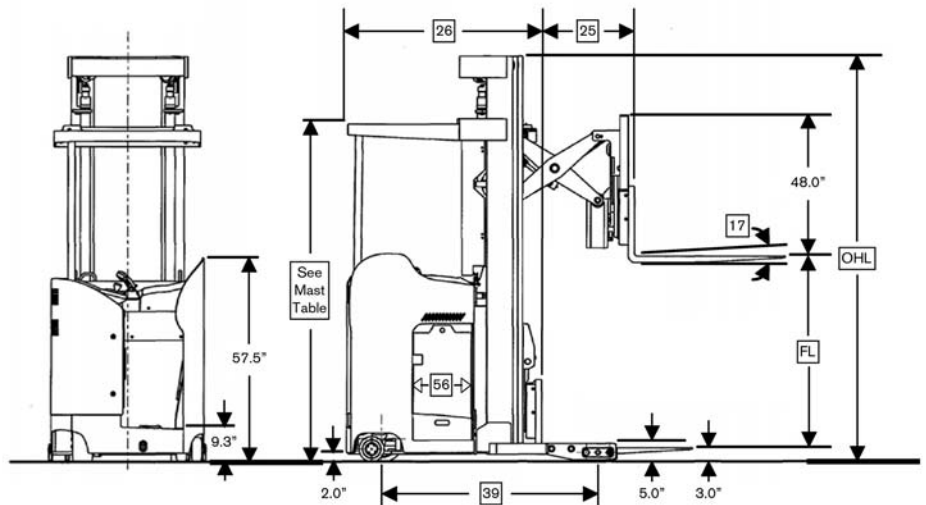
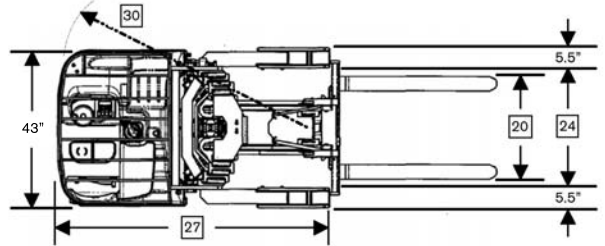
Main Truck Specifications

				Nissan	Nissan	Nissan	
CHARACTERISTICS	1	Manufacturer's Name		Nissan	Nissan	Nissan	
	2	Model	Model designation	SRX35N	SRX45N	SRX45LN	
	3		Long model code	SM1H235NV	SM1H245NV	SG1H245NV	
	4	Wheelbase Type		STD	STD	LWB	
	5	Load Capacity	Rated capacity	lb (kg)	3500 (1750)	4500 (2250)	4500 (2250)
	6	Load Center	Distance	in (mm)	24 (610)	24 (610)	24 (610)
	7	Power Type	Electric	volt	36	36	36
	8	Reach Type			Single Reach	Single Reach	Single Reach
	9	Operator Orientation			Stand	Stand	Stand
	10	Tire Type	Load / Caster / Drive		Poly	Poly	Poly
	11	Wheels (x=driven)	Load / Caster / Drive		4 / 2 / 1x	4 / 2 / 1x	4 / 2 / 1x
DIMENSIONS	12	Mast	Max. fork height (MFH)	in (mm)	210 (5335)	210 (5335)	210 (5335)
	13		Mast lowered (OHL)	in (mm)	95 (2415)	95 (2415)	95 (2415)
	14		Standard freelif (FL) with LBR	in (mm)	47 (1195)	47.2 (1200)	47.2 (1200)
	15		Mast extended with LBR	in (mm)	260.3 (6615)	260.3 (6615)	260.3 (6615)
	16		Height - top of standard LBR	in (mm)	48 (1220)	48 (1220)	48 (1220)
	17	Tilt Angle	Standard carriage - fwd/back	degree	3° / 4°	3° / 4°	3° / 4°
	18	Forks	Width x thickness	in (mm)	4 x 1.5 (100 x 40)	4 x 1.75 (100 x 45)	4 x 1.75 (100 x 45)
	19		Length	in (mm)	42 (1070)	42 (1070)	42 (1070)
	20		Min. spread (o.d.)	in (mm)	8 (203)	8 (203)	8 (203)
	21		Max. spread (o.d.) ¹	in (mm)	31.5 (800)	31.5 (800)	31.5 (800)
	22		Fork lowered height (TOF)	in (mm)	3.0 (75)	3.2 (80)	3.2 (80)
	23	Outrigger	Height ¹	in (mm)	5.0 (130)	5.0 (130)	5.0 (130)
	24	Outrigger Width	I.D. min - max (in 1" increments)	in (mm)	33 - 50 (840 - 1270)	33 - 50 (840 - 1270)	33 - 50 (840 - 1270)
	25	Overall Dimensions	Maximum stroke	in (mm)	22.8 (580)	22.4 (570)	22.4 (570)
	26		Length (to face of forks)	in (mm)	54.1 (1375)	55.6 (1415)	60.1 (1525)
	27		Length (to face of outriggers)	in (mm)	74.5 (1895)	75.6 (1920)	80.0 (2035)
	28		Width - truck chassis	in (mm)	43.0 (1090)	43.0 (1090)	43.0 (1090)
	29		Height - top of OHG	in (mm)	93.5 (2375)	93.5 (2375)	93.5 (2375)
	30	Turning Radius	Minimum outside	in (mm)	69.4 (1760)	70.4 (1790)	74.9 (1900)
	31	Min. Right Angle Stack	48" L x 40" W pallet (add clearance) ¹	in (mm)	100 (2540)	102 (2590)	106 (2690)
PERFORMANCE	32	Speeds	Travel - loaded - fwd / rev	mph (kph)	6.4 (10.3) / 7.2 (11.6)	6.4 (10.3) / 7.2 (11.6)	6.4 (10.3) / 7.2 (11.6)
	33		Travel - unloaded - fwd / rev	mph (kph)	6.4 (10.3) / 7.2 (11.6)	6.4 (10.3) / 7.2 (11.6)	6.4 (10.3) / 7.2 (11.6)
	34		Lift - loaded	fpm (mm/sec)	70 (356)	70 (356)	70 (356)
	35		Lift - unloaded	fpm (mm/sec)	120 (610)	120 (610)	120 (610)
	36		Lower - loaded	fpm (mm/sec)	95 (483)	95 (483)	95 (483)
	37		Lower - unloaded	fpm (mm/sec)	87 (442)	87 (442)	87 (442)
CHASSIS & WHEELS	38	Truck Weight	210" Mast, empty, no battery	lb (kg)	6005 (2725)	6420 (2915)	6540 (2970)
	39	Wheelbase	Distance between axles on centers	in (mm)	59.0 (1500)	60.1 (1525)	64.6 (1640)
	40	Chassis Length		in (mm)	35.2 (895)	35.2 (895)	39.7 (1010)
	41	Step Height		in (mm)	9.3 (235)	9.3 (235)	9.3 (235)
	42	Ground Clearance	Center of wheelbase	in (mm)	2.0 (50)	2.0 (50)	2.0 (50)
	43		Under mast	in (mm)	2.0 (50)	2.0 (50)	2.0 (50)
	44	Tire Size	Drive tire	in (mm)	13 x 5.5 (330 x 140)	13 x 5.5 (330 x 140)	13 x 5.5 (330 x 140)
	45		Caster wheels - dual	in (mm)	7 x 2.87 (178 x 73)	7 x 2.87 (178 x 73)	7 x 2.87 (178 x 73)
	46		Load wheels - tandem	in (mm)	5 x 4 (127 x 100)	5 x 4 (127 x 100)	5 x 4 (127 x 100)
	47	Service Brake	Type		Regen	Regen	Regen
48	Parking Brake	Type		Electric Disc	Electric Disc	Electric Disc	
DRIVE LINE	49	Steering	On-demand		Electric	Electric	Electric
	50	Traction Motor	Type		AC Induction	AC Induction	AC Induction
	51		Control type		AC Inverter	AC Inverter	AC Inverter
	52		Rating - 60 minute	HP (kW)	8.0 (6.0)	8.0 (6.0)	8.0 (6.0)
	53	Pump Motor	Type		AC Induction	AC Induction	AC Induction
54	Rating - 5 minute		HP (kW)	18.8 (14)	18.8 (14)	18.8 (14)	
BATTERY	55	Recommended Size	Lead Acid		18-125-13	18-125-13	18-125-17
	56	Compartment Size	L	in (mm)	16.4 (415)	16.4 (415)	20.9 (530)
	57		W x H	in (mm)	38.7 x 32 (980 x 810)	38.7 x 32 (980 x 810)	38.7 x 32 (980 x 810)
	58	Amp Hr Capacity	Min / Max (6-hr)	Ah	600 / 930	600 / 930	880 / 1240
	59	Weight	Minimum / Maximum	lb (kg)	2060 (935) / 2305 (1045)		2600 (1180) / 3015 (1370)
	60	Battery Roller Height	From floor	in (mm)	6.2 (158)	6.2 (158)	6.2 (158)
	61	Lead Length	Position B / SB-350 Gray	in (mm)	24 (610)	24 (610)	24 (610)
62	Connector		type	SB-350 Gray	SB-350 Gray	SB-350 Gray	

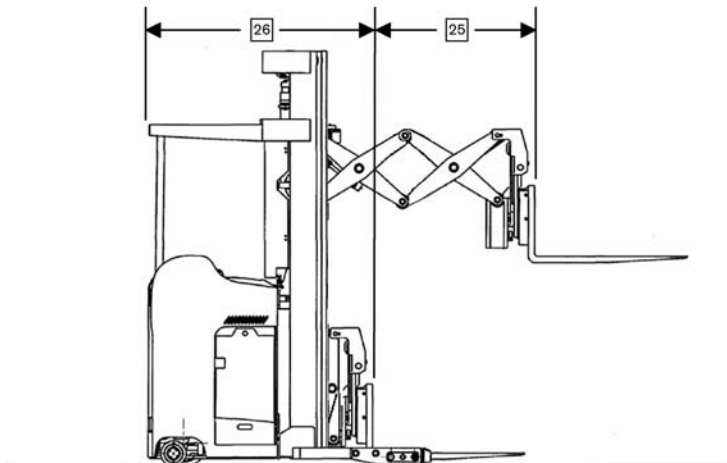
3,000 - 4,500 lb. capacity

Nissan	Nissan	1
SRX30ND	SRX30LND	2
DM1H230NV	DG1H230NV	3
STD	LWB	4
3000 (1500)	3000 (1500)	5
24 (610)	24 (610)	6
36	36	7
Double Reach	Double Reach	8
Stand	Stand	9
Poly	Poly	10
4 / 2 / 1x	4 / 2 / 1x	11
210 (5335)	210 (5335)	12
95 (2415)	95 (2415)	13
47 (1195)	47 (1195)	14
260.3 (6615)	260.3 (6615)	15
48 (1220)	48 (1220)	16
3° / 4°	3° / 4°	17
4 x 1.5 (100 x 40)	4 x 1.5 (100 x 40)	18
42 (1070)	42 (1070)	19
8 (203)	8 (203)	20
31.5 (800)	31.5 (800)	21
3.0 (75)	3.0 (75)	22
5.0 (130)	5.0 (130)	23
33 - 50 (840 - 1270)	33 - 50 (840 - 1270)	24
40.2 (1020)	40.2 (1020)	25
61.9 (1570)	66.3 (1685)	26
77.5 (1970)	82.0 (2085)	27
43.0 (1090)	43.0 (1090)	28
93.5 (2375)	93.5 (2375)	29
72.4 (1840)	76.8 (1950)	30
108 (2745)	113 (2870)	31
6.4 (10.3) / 7.2 (11.6)	6.4 (10.3) / 7.2 (11.6)	32
6.4 (10.3) / 7.2 (11.6)	6.4 (10.3) / 7.2 (11.6)	33
70 (356)	70 (356)	34
120 (610)	120 (610)	35
95 (483)	95 (483)	36
95 (483)	95 (483)	37
6715 (3045)	6835 (3100)	38
62.0 (1575)	66.5 (1690)	39
35.2 (895)	39.7 (1010)	40
9.3 (235)	9.3 (235)	41
2.0 (50)	2.0 (50)	42
2.0 (50)	2.0 (50)	43
13 x 5.5 (330 x 140)	13 x 5.5 (330 x 140)	44
7 x 2.87 (178 x 73)	7 x 2.87 (178 x 73)	45
5 x 4 (127 x 100)	5 x 4 (127 x 100)	46
Regen	Regen	47
Electric Disc	Electric Disc	48
Electric	Electric	49
AC Induction	AC Induction	50
AC Inverter	AC Inverter	51
8.0 (6.0)	8.0 (6.0)	52
AC Induction	AC Induction	53
18.8 (14)	18.8 (14)	54
18-125-13	18-125-17	55
16.4 (415)	20.9 (530)	56
38.7 x 32 (980 x 810)	38.7 x 32 (980 x 810)	57
600 / 930	880 / 1240	58
2060 (935) / 2305 (1045)	2600 (1180) / 3015 (1370)	59
6.2 (158)	6.2 (158)	60
24 (610)	24 (610)	61
SB-350 Gray	SB-350 Gray	62

**SRX35N
SRX45N**



SRX30ND



Technical Information

Standard Equipment

1. 36-volt electrical system
2. AC-powered drive motor and hydraulic pump motor
3. Transistorized AC motor control
4. Motors and controller temperature protection
5. Multi-function LED display
6. Battery discharge indicator (BDI) with lift interrupt
7. Steer tire position indicator
8. Four hour meters
9. Speedometer
10. On-board diagnostics with built-in test equipment
11. Parking brake warning indicator
12. Small radius tiller steer control
13. On-demand electric power steering, with DC steer motor
14. 4-mode regenerative braking (plugging, foot brake, neutral brake, lift stop)
15. Auto-applied parking brake with anti-rollback
16. Multi-function control handle for fwd/rev travel control, horn, lift/lower, reach, tilt, and sideshift*
17. Emergency power disconnect switch and auto power off
18. Infinitely variable lift/lower speed control
19. Nissan's operator presence system includes mast-lockout
20. Side-stance operator compartment with low step height
21. Anti-fatigue cushioned back, arm-rest, and knee padding
22. Adjustable height operator backrest padding
23. Angled floorboard
24. Integrated convenience tray
25. Safety glass mast guard
26. Battery rollers and removable side gates
27. Triplex mast: 210" MFH / 95" OHL
28. 48" high load backrest
29. 33" - 50" I.D. base legs
30. 5" x 4" tandem load wheels
31. Anti-static ground strap
32. U.L. "E" rating

Optional Equipment

1. Variety of available mast heights
2. Standard or polished and tapered forks in a variety of lengths
3. Integral side shifter

4. 36" high load backrest
5. Single, narrow or low profile load wheels
6. Automatic fork height selector
7. Digital fork height indicator
8. Operator light and fan
9. Front LED headlights
10. Rear LED work light
11. Strobe light and travel alarms
12. Fire extinguisher
13. Reverse steering
14. Wire mesh mast guard
15. Freezer package for environments from 32° F (0° C) to -20° F (-29° C)
16. U.L. "EE" rating (16.4" battery only)

Enhanced Operator Comfort and Productivity

The Platinum SRX Series offers a variety of operator conveniences for enhanced comfort and increased productivity. Entry and exit is simplified due to a low step height, resulting in less operator fatigue. Its open compartment design includes a wrap-around console including an integrated clipboard holder and storage cup. The truck's side stance design provides comfortable forward or reverse driving, and includes a gently sloped floorboard, offering a relaxed driving position. The operator platform includes a wide, dual-pedal system for greater operator control. Its brake release pedal is on the left, with an operator presence pedal on the right.

To minimize bodily stresses from standing throughout a shift or riding over rough warehouse floors, the floorboard sits atop four vibration isolators. Combined with its cushioned floor mat, the SRX provides a smoother, more enjoyable ride. Operator comfort is further enhanced with thick padding located beneath the operator's arm, a height-adjustable cushioned backrest, and knee pad.

A rear overhead guard post and high operator backrest on the SRX provide added protection for the operator, which is especially important when working in tight areas around racking.

Nissan's intuitive, multi-function handle is ergonomically designed to reduce operator effort, resulting in more accurate, precise control. Operational commands including drive, lift and lower, horn, reach, and sideshift* (or other auxiliary function) can be performed by this single handle. Its design helps prevent unintentional operator commands from occurring, by allowing the operator to rest his or her right hand on the controller without initiating truck movement.

Increased operator productivity is realized through customizable speed settings, which are available for the truck's lift, tilt, reach and sideshift operations.

A small diameter tiller and electronic power steering allow greater control and maneuverability with less effort.

The dash includes an LED display to communicate truck status and warnings to the operator including: travel speed, battery capacity, hour meter, parking brake warning, and steer wheel position.

The SRX Series' standard safety features include: Mast Lock (automatically locking mast lift and tilt) when the operator presence pedal is released, Lift Control (restricting lift speed at faster travel speeds), reduced travel speed at high lift heights, and Ramp Hold (automatic parking brake), ideal for trucks using push-back racks.

The overhead guard's design incorporates wide slots for maximum upward visibility during high reach operations allowing for easier load handling and increased operator efficiency.

Features for Reduced Battery Consumption

The advanced AC control system on Nissan's SRX Series ensures that travel and hydraulic motors are running at peak efficiency. By continually monitoring operator commands, the control system ensures the exact response needed is achieved, and energy is not wasted.

Its on-demand electronic power steering system produces quieter operation, while less energy is required from the battery. And four-mode regenerative braking transforms kinetic energy into electrical energy flowing back to the battery, for longer operation.

The auto-power off system shuts off truck power after 15 minutes of non-operation.

A programmable Battery Discharge Indicator offers a means to better match actual battery usage patterns for a typical discharge rate, in order to help produce reliable battery life.

Battery and Electrical

Incorporating a 36-volt electrical system, the motor controllers feature transistorized power inverters for DC to three phase AC power conversion.

An emergency stop/power disconnect button shuts off truck power in case of an emergency.

Brake System

Adjustable, regenerative braking brings the truck to a smooth, controlled stop when the foot brake is released, the direction lever is in neutral, or while plugging.

The disc brake is applied automatically when the truck travel speed is zero and no direction command has been given. This spring applied/electronic released disc brake is mounted directly to the drive motor, with no brake cylinder or hydraulic brake fluid requiring service.

Chassis & Outrigger

The SRX Series' rugged frame design features a compact design for enhanced maneuverability. The reinforced overhead guard design allows easy replacement should individual components become damaged.

A dual-spring caster suspension system design offers smoother, more stable operation over rough driving surfaces. Dual, articulating caster wheels minimize tire scrubbing when pivoting.

*If equipped

Technical Information **Platinum SRX Series**

Outriggers are welded on to the mast frame producing a strong, rugged design for stability and support. Bolt-on load wheel boxes simplify maintenance, enhancing productivity.

Mast and Reach Design

A clear-view, full free lift, 210" MFH/95" OHL three stage mast, with safety glass guard, provides an unobstructed view of the load and enhances operator safety.

This rugged, high visibility mast incorporates an interlocking channel and I-beam, with heavy-duty mast rollers, for greater durability and longer life.

The rugged single and double reach mechanism used on the

SRX Series features a scissor pantograph design, incorporating dual reach cylinders, providing strength and durability to increase component life while handling large loads.

The retract function is hydraulically cushioned for smooth operation, with programmable speed for customized performance.

Drive Unit

The rugged AC drive motor offers high power and quick response. The stationary drive motor eliminates cable flexing during steering.

Hydraulics

A powerful AC motor drives the

hydraulic pump for all load handling operations performed by the SRX Series mast.

Lower Ownership Costs

The SRX Series features brushless, AC-powered drive and hydraulic pump motors with a single contactor design. This results in fewer serviceable parts, such as commutators, contactors, and brushes. Lower overall operating costs are achieved by eliminating expenses related to inspection and replacement of these items.

When scheduled maintenance is required, the SRX provides exceptional access through its removable top panels and swing-out side panel.

The SRX controller includes a built-in test-equipment module with onboard diagnostics and coded service history, logged by hour meter reading. The smart LED meter panel offers an intuitive on-board diagnostics display, and access to the truck's service history, making troubleshooting faster and easier, for less downtime and more productive working hours.

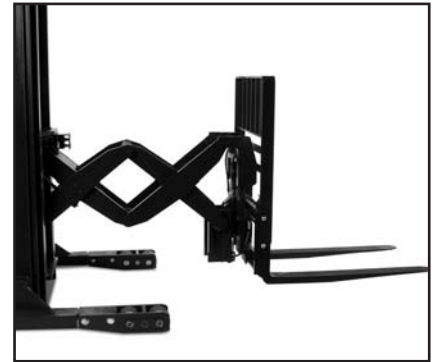
As a safeguard for your investment, all AC motors and controllers on the SRX have thermal protection as standard. In the event that overheating occurs, a warning will alert the operator, immediately followed by a reduction in the truck's performance level.



The operator's dash includes an ergonomic layout of its instruments, such as an easy to read digital display, small radius tiller for tighter control and an intuitive multi-function handle.



The smart design of the multi-functional control handle places soft touch buttons within easy reach, without twisting or turning the wrist. The handle's contoured shape offers a natural cradle for the operator's hand, while a cushioned armrest provides added support during operation.



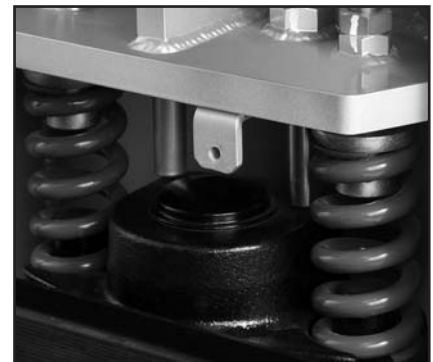
A rugged internally nested carriage, incorporates a compact design, with a full 22" stroke (single reach) or 40" (double reach). Its dual reach cylinders reduce stress and distortion, while evenly distributing the load for reduced shock and wear.



Optional rear strobe and work lights are ideal for providing added safety in busy or congested areas of the warehouse.



Choose the optional automatic fork height selector to save valuable time during storage and retrieval operations, for increased operator productivity.



Greater stability and a smoother ride are achieved due to a dual spring suspension system in the caster wheel design. This design assists in maintaining a consistent load on the drive wheel for improved traction, steering and brake control during operation.

Option Availability

Platinum SRX Series - Rider Reach & Rider Double Reach Models

Standard S Option O

		SRX35N	SRX45N SRX45LN	SRX30ND SRX30LND
Vehicle Management	AC motor controller with built-in self-diagnostics	S	S	S
	Multi-function LED display	S	S	S
	Battery discharge indicator with lift interrupt	S	S	S
	Four individual hour meter readings	S	S	S
	Multi-function control handle	S	S	S
	Emergency power disconnect switch	S	S	S
	Motor and controller temperature protection	S	S	S
	Automatic fork height selector	O	O	O
	Digital fork height indicator	O	O	O
Chassis & Mast	AC drive motor	S	S	S
	36-volt electrical system	S	S	S
	Battery compartment rollers and side gates	S	S	S
	Three-stage mast: 95" OHL / 210" MFH	S	S	S
	48" high load backrest	S	S	S
	U.L. "EE" Rating ¹	O	O	O
Outriggers	33" - 50" I.D. base legs	S	S	S
	5" x 4" tandem load wheels	S	S	S
	10.5" x 4" single load wheels	O	O	O
	5" x 3" tandem narrow load wheels	O	O	O
	4" x 3" tandem low profile load wheels	O	O	O
	Tapered outrigger tips (load wheel guard)	O	O	O
Operator Presence System	Operator presence pedal with mast lockout and return-to-neutral	S	S	S
	Brake pedal (depress to travel)	S	S	S
Steering System	On-demand electronic power steering	S	S	S
	Small radius tiller control	S	S	S
	Steer tire position indicator	S	S	S
Brake	4-mode regen braking	S	S	S
	Automatic parking brake with anti-rollback	S	S	S
Hydraulic System	AC hydraulic pump motor	S	S	S
	Proportional lift and lower	S	S	S
Operator Conveniences	90° operator side stance	S	S	S
	Anti-fatigue arm, knees and back padding	S	S	S
	Adjustable operator backrest cushion	S	S	S
	Safety glass mast guard	S	S	S
	Operator fan and light	O	O	O
	Front or rear work lights	O	O	O
	Strobe lights	O	O	O
	Wire mesh mast guard	O	O	O

(1) U.L. "EE" rating available with 16.4" battery box only.



Nissan Forklift Corporation reserves the right to make product changes relating to colors, equipment, specifications or available options without notice. For more information, contact your Nissan Forklift representative.



NISSAN
FORKLIFT

WCN Series

Walkie Counterbalanced Stacker

3,000 & 4,000 lb.
Capacities



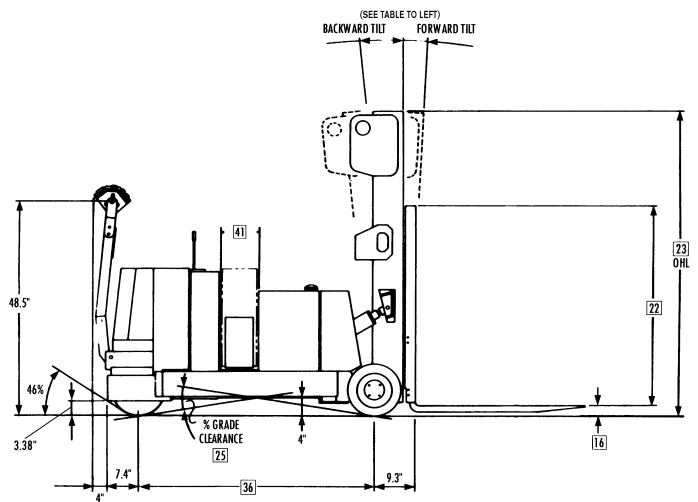
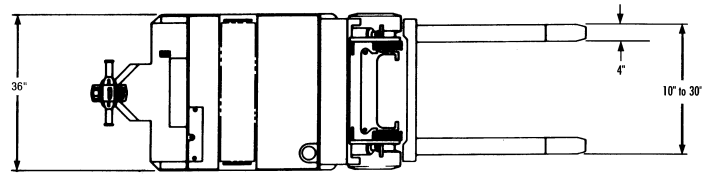
Mast Specifications & Rated Capacities

Dimensions

WCN-30 / WCN-40

Mast Type	Maximum Fork Height	Overall Height Lowered	Free Lift*	Rated Capacity at 24" Load Center	
				WCN-30	WCN-40
TWO STAGE (Lo Free Lift)	105.5 (2680)	72 (1829)	5.5 (140)	3000 (1361)	4000 (1814)
	115.5 (2934)	77 (1956)	5.5 (140)	3000 (1361)	4000 (1814)
	127.5 (3239)	83 (2108)	5.5 (140)	3000 (1361)	4000 (1814)
	139.5 (3543)	89 (2261)	5.5 (140)	3000 (1361)	4000 (1814)
	151.5 (3848)	95 (2413)	5.5 (140)	3000 (1361)	3950 (1792)
TWO STAGE (High Free Lift)	105.5 (2680)	72 (1829)	51 (1295)	3000 (1361)	4000 (1814)
	115.5 (2934)	77 (1956)	56 (1422)	3000 (1361)	4000 (1814)
	127.5 (3239)	83 (2108)	62 (1575)	3000 (1361)	4000 (1814)
	139.5 (3543)	89 (2261)	68 (1727)	3000 (1361)	4000 (1814)
	151.5 (3848)	95 (2413)	74 (1880)	3000 (1361)	3950 (1792)
THREE STAGE	155.5 (3950)	72 (1829)	51 (1295)	3000 (1361)	4000 (1814)
	170 (4318)	77 (1956)	56 (1422)	2700 (1225)	3750 (1701)
	188 (4775)	83 (2108)	62 (1575)	2475 (1123)	3450 (1565)
	202 (5131)	89 (2261)	68 (1727)	2325 (1055)	3275 (1486)
	216 (5486)	95 (2413)	74 (1880)	2175 (987)	2950 (1338)

*Free lift fork height does not include backrest extension.



Mast Tilt

Lift Height	Forward	Back
Up to 130"	3°	6°
131" to 160"	2°	4°
Over 160"	1°	5°

Aisle Specifications

Right Angle Stacking Aisle Requirements*

WCN-30

Load Width	Load Length					
	30"	32"	36"	40"	42"	48"
30"	103.2	105.0	108.8	112.6	114.5	120.3
32"	103.5	105.4	109.1	112.9	114.8	120.6
36"	104.3	106.1	109.8	113.6	115.5	121.1
40"	105.2	107.0	110.6	114.3	116.1	121.8
42"	105.6	107.4	111.0	114.7	116.5	122.1
48"	107.1	108.9	112.4	115.9	117.7	123.2

WCN-40

Load Width	Load Length					
	30"	32"	36"	40"	42"	48"
30"	110.4	112.3	116.1	119.9	121.8	127.6
32"	108.0	112.6	116.4	120.2	122.1	127.8
36"	111.6	113.4	117.1	120.8	122.7	128.4
40"	112.4	114.2	117.9	121.5	123.4	129.0
42"	112.9	114.7	118.3	121.9	123.8	129.4
48"	114.4	116.1	119.6	123.2	125.0	130.5

*Based on 4" clearance between pallets.

90° Intersecting Aisle Requirements*

WCN-30

Load Width	Load Length					
	30"	32"	36"	40"	42"	48"
30"	58.1	58.5	59.4	60.5	61.1	63.0
32"	58.4	58.9	59.8	60.9	61.5	63.4
36"	59.2	59.7	60.6	61.7	62.3	64.2
40"	61.4	61.9	62.9	64.0	64.6	66.5
42"	62.6	63.0	64.0	65.1	65.7	67.7
48"	66.0	66.4	67.5	68.6	69.7	71.3

WCN-40

Load Width	Load Length					
	30"	32"	36"	40"	42"	48"
30"	61.5	61.8	62.7	63.6	64.1	65.7
32"	61.8	62.2	63.0	64.0	64.5	66.1
36"	62.6	63.0	63.8	64.8	65.3	66.9
40"	64.8	65.2	66.0	67.0	67.5	69.2
42"	65.9	66.3	67.1	68.1	68.6	70.3
48"	69.3	69.7	70.5	71.5	72.0	73.8

* Aisle dimensions are minimum. Nissan Forklift recommends 6"-10" additional clearance for ease of operation.

Dimensions for both 8.25" and 13.5" wide battery compartments.

Add 2" for side shifter.

3,000 - 4,000 lb. capacities

Main Truck Specifications									
CHARACTERISTICS	1	Manufacturer's Name			Nissan Forklift		Nissan Forklift		1
	2	Model	Model designation		WCN-30		WCN-40		2
	3	Load Capacity	Rated capacity	lb (kg)	3000 (1500)		4000 (2000)		3
	4	Load Center	Distance	in (mm)	24 (600)		24 (600)		4
	5	Power Type	Electric	volt	12	24	12	24	5
	6	Operator Type			Walkie Counterbalanced		Walkie Counterbalanced		6
	7	Tire Type	Front and rear		Poly / Poly		Poly / Poly		7
	8	Wheels	Number (x=driven) - front/rear		2 / 1x		2 / 1x		8
DIMENSIONS	9	Mast	Max. fork height (MFH)	in (mm)	105.5 (2680)		105.5 (2680)		9
	10		Freelift (FL)	in (mm)	51 (1295)		51 (1295)		10
	12	Forks	Thickness x width	in (mm)	1.6 x 4.2 (40 x 106)		1.6 x 4.2 (40 x 106)		12
	13		Length	in (mm)	42.1 (1070)		42.1 (1070)		13
	14		Min. spread (o.d.)	in (mm)	10 (254)		10 (254)		14
	15		Max. spread (o.d.)	in (mm)	30 (762)		30 (762)		15
	16		Fork lowered height	in (mm)	2.0 (51)		2.0 (51)		16
	19	Overall Dimensions	Length (to face of forks)	in (mm)	70.5 (1790)		77.7 (1974)		19
	20		Length (to end of forks)	in (mm)	112.2 (2858)		119.7 (3040)		20
	22		Height - top of standard LBR	in (mm)	48 (1219)		48 (1219)		22
	23		Mast lowered (OHL)	in (mm)	72 (1829)		71 (1803)		23
	24		Mast extended with LBR	in (mm)	153.5 (3899)		153.5 (3899)		24
25	Grade Clearance	8.25" and 13.5" battery compartments	%	15%		13%		25	
26	Turning Radius	Minimum outside	in (mm)	61.13 (1553)		68.38 (1737)		26	
27	Min. Right Angle Stack	48" L x 40" W pallet (add clearance)	in (mm)	121.8 (3094)		129.0 (3277)		27	
28	Truck Weight	103.5" Mast, empty, no battery	lb (kg)	5027 (2282)		5099 (2315)		28	
PERFORMANCE	29	Speeds	Travel - full load	mph (kph)	2.1 (3.4)	2.1 (3.4)	2.0 (3.2)	2.0 (3.2)	29
	30		Travel - no load	mph (kph)	2.4 (3.9)	2.5 (4.0)	2.3 (3.7)	2.5 (4.0)	30
	31		Lift - full	fpm (mm/sec)	16 (81)	31 (157)	12 (61)	30 (152)	31
	32		Lift - empty	fpm (mm/sec)	24 (122)	42 (213)	25 (127)	43 (218)	32
	33		Lower - full	fpm (mm/sec)	47 (239)	47 (239)	54 (274)	54 (274)	33
	34		Lower - empty	fpm (mm/sec)	26 (132)	26 (132)	31 (157)	31 (157)	34
CHASSIS & WHEELS	35	Overall Width	Width	in (mm)	36 (915)		36 (915)		35
	36	Wheelbase	Distance between axles on centers	in (mm)	53.75 (1365)		61.0 (1550)		36
	37	Tire Size	Drive tire	in (mm)	12 x 4.5 (305 x 114)		12 x 4.5 (305 x 114)		37
	38		Load wheels	in (mm)	12 x 4.5 (305 x 114)		12 x 4.5 (305 x 114)		38
	39	Service Brake	Type		Drum and Shoe		Drum and Shoe		39
BATTERY	40	Type			Lead Acid		Lead Acid		40
	41	Compartment Size	Width x Height	in (mm)	32 x 31 (813 x 788)		32 x 31 (813 x 788)		41
			Length	in (mm)	8.25 (210)	13.5 (343)	8.25 (210)	13.5 (343)	
	42	Amp Hr Capacity	Min / Max (6-hr)	Ah	375 / 750	450 / 750	375 / 750	450 / 750	42
	43	Weight	Min / Max	lb (kg)	410 / 725 (185 / 330)		410 / 725 (185 / 330)		43
	44	Lead Length	Position "B"	in (mm)	20 (508)		20 (508)		44
45	Connector		type	SB-175 Grey		SB-175 Grey		45	

NOTE: 12-Volt models are standard.

24-Volt model specifications based on larger 32" x 13.5" x 31"H battery compartment size.

Technical Information WCN Series

Standard Equipment

- 12-volt electrical system
- Premium heavy-duty motor
- Curtis PMC 1205 transistor travel controller
- Reversing switch in handle
- Electronic horn
- Curtis 701 solid state LCD hour meter
- Key switch
- Battery compartment: 32" x 8.25" x 31"
- Clam-type battery retainers
- Minimum battery weight: 410 lbs.
- SB-2 Battery connector (175 Amp – grey)
- 2 Spool hydraulic control valve
- Oil filter in hydraulic system
- 48" h x 32.6" w load backrest
- Duplex FFL mast: 72" OHL / 105.5" MFH / 51" FL
- Fork lengths: 30", 36", 42"
- Fork spacing: 10" min. to 30" max. o.d.
- Poly drive tire – 12" x 4.5"
- Rubber load wheels – 12" x 4.5"

Optional Equipment

- 24-volt electrical system with 13.5" wide battery compartment
- Fuel gauge type battery discharge indicator
- Battery discharge indicator with lift interrupt
- Battery compartment rollers with drop-in gates
- Cold storage protection
- Side shifter with single function hydraulics and IHR

Steer Control Features

Steering handle with outside stationary grips provides low-effort pull-down into the operating range. Thumb-operated butterfly speed controls inside the control head provide easy and precise truck control. Large safety reversing switch, on the control handle, reverses truck travel direction if operator contact is made. Control head features lift, lower, and horn buttons within convenient operator reach. Gas charged cylinder returns the handle with uniform force, while a rubber stop at the end of travel prevents switch shock.

Electrical

12-volt electrical system with heavy-duty series wound class 'H' insulated drive motor. PMC transistor travel controller for smooth, controlled acceleration, infinitely variable speed control, and increased energy efficiency. Key switch and solid state LCD hour meter are standard. Steer handle wiring harness constructed of extra flexible stranded tinned copper conductor wiring with silicone insulation for increased durability and reduced maintenance.

Drive Unit Assembly

Exclusive balanced drive system designed with drive motor, transmission and drive tire mounted in a vertical column. This stationary design greatly reduces steer effort, unbalanced torque conditions, and cable flexing, for enhanced reliability and reduced maintenance costs.

Brake System

Dual braking positions within upper and lower handle movement range enhance operating efficiency. The 7" diameter brake drum provides excellent braking response, with the largest braking surface in its class.

Hydraulic System

Hydraulic system features heavy-duty lift pump and motor, overload protection valve, solenoid release valve for lowering, check valve, and flow regulator. Return line filtering protects the system against environmental contaminants.

Steering

190° steering arc (95° each side of center) allows for precise maneuvering in tight spaces for increased operator efficiency. Steer handle is mounted to the bottom of drive unit for maximum leverage and steering ease.

Frame Assembly

Rugged frame with high under clearance for tough dock applications. Steel covers for rugged durability and component protection. Powder coat paint for a durable, high gloss, scratch resistant finish.

Battery Compartment

The battery compartment features unique battery retention gates that eliminate side-to-side battery movement. Clam-type steel battery retainers keep the battery secure in the battery compartment and allow for quick and easy battery change without the use of hand tools.

Ease of Service

Removing five bolts allows quick and simple drive tire replacement. The hub has a built-in drive wheel puller to simplify the job. One screw removal, simplifies drive motor brush inspection. Lubrication fittings are easily accessible with the truck upright and the battery in place. Removal of four hood bolts allows quick access to internal components. Number coded electrical wiring simplifies wiring harness maintenance. One nut removal of the brake drum allows easy access for periodic inspection and maintenance.



NISSAN
FORKLIFT

WSN Series

Walkie Straddle Stacker

3,000 & 4,000 lb.
Capacities



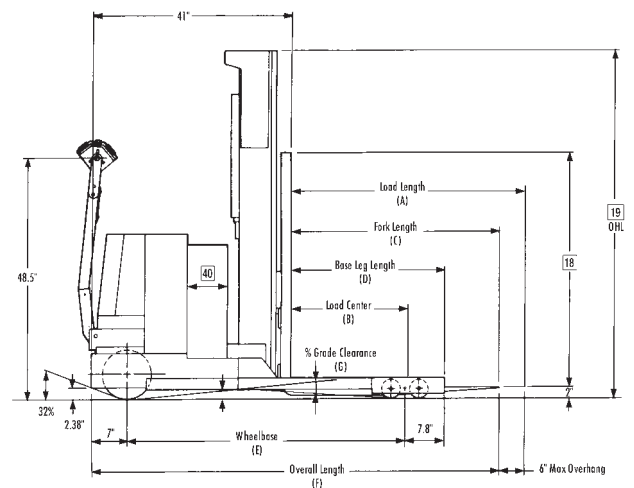
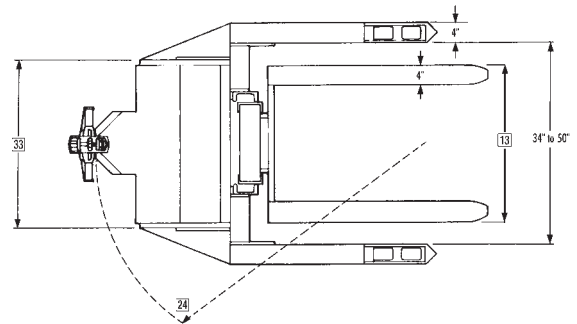
Mast Specifications & Rated Capacities

Dimensions

WSN-30/WSN-40

Mast Type	Maximum Fork Height	Overall Height Lowered	Free Lift	Capacity at 24" Load Center	
				WSN-30	WSN-40
TWO STAGE LO FREE LIFT	105.5 (2680)	72 (1829)	5.5 (140)	3000 (1360)	4000 (1814)
	115.5 (2934)	77 (1956)	5.5 (140)	3000 (1360)	4000 (1814)
	127.5 (3239)	83 (2108)	5.5 (140)	3000 (1360)	4000 (1814)
	139.5 (3543)	89 (2261)	5.5 (140)	3000 (1360)	4000 (1814)
	151.5 (3848)	95 (2413)	5.5 (140)	3000 (1360)	3950 (1792)
TWO STAGE HI FREE LIFT	105.5 (2680)	72 (1829)	51 (1295)	3000 (1360)	4000 (1814)
	115.5 (2934)	77 (1956)	56 (1422)	3000 (1360)	4000 (1814)
	127.5 (3239)	83 (2108)	62 (1575)	3000 (1360)	4000 (1814)
	139.5 (3543)	89 (2261)	68 (1727)	3000 (1360)	4000 (1814)
	151.5 (3848)	95 (2413)	74 (1880)	3000 (1360)	3950 (1792)
THREE STAGE	155.5 (3950)	72 (1829)	51 (1295)	3000 (1360)	4000 (1814)
	170 (4318)	77 (1956)	56 (1422)	3000 (1360)	3750 (1701)
	188 (4775)	83 (2108)	62 (1575)	3000 (1360)	3450 (1565)
	202 (5131)	89 (2261)	68 (1727)	2850 (1293)	3275 (1486)
	216 (5486)	95 (2413)	74 (1880)	2700 (1225)	2950 (1338)

Outrigger dimensions may affect truck capacity.



Right Angle Stacking Aisle

WSN-30/WSN-40

Load Length	Load Width					
	30"	32"	36"	40"	42"	48"
30"	58 (1473)	59 (1499)	60 (1524)	60 (1524)	61 (1549)	62 (1575)
32"	59 (1499)	60 (1524)	60 (1524)	61 (1549)	61 (1549)	63 (1600)
36"	63 (1600)	63 (1600)	64 (1626)	65 (1651)	65 (1651)	67 (1702)
40"	73 (1854)	72 (1829)	68 (1727)	67 (1702)	67 (1702)	69 (1753)
42"	76 (1930)	75 (1905)	74 (1880)	70 (1778)	70 (1778)	69 (1753)
48"	80 (2032)	79 (2007)	75 (1905)	74 (1880)	74 (1880)	76 (1930)

- 5" spacing between loads/pallets.
- Add 1" for WSN-40 models using Triplex mast.
- Add 5.25" for 24v models.
- Add 6"-10" for ease of operation.

Note: Consult factory for trucks with larger pallet spacing or side shifter.

Aisle requirements determined by method of storing and spacing.

Dimensional Data*

WSN-30/WSN-40

	(A)-Load Length					
	30"	32"	36"	40"	42"	48"
(B) - Load Center	15 (381)	16 (406)	18 (457)	20 (508)	21 (533)	24 (610)
(C) - Fork Length	24 (610)	30 (762)	30 (762)	36 (914)	36 (914)	42 (1067)
(D) - Base Leg Length	20 (508)	21 (533)	25 (635)	27 (686)	28 (711)	35 (889)
(E) - Wheelbase**	46 (1168)	47 (1194)	51 (1295)	53 (1346)	54 (1372)	61 (1549)
(F) - Overall length**	65.2 (1656)	71.2 (1808)	71.2 (1808)	77.2 (1961)	77.2 (1961)	83.2 (2113)
(G) - Grade Clearance %	16 (406)	15.5 (394)	15 (381)	14.5 (368)	14 (356)	13.5 (343)

*Specified load length will determine fork and base leg lengths.

**Add 5.25" for 24v models (13.5" long battery compartment).

3,000 - 4,000 lb. capacity

Main Truck Specifications

CHARACTERISTICS				Nissan		Nissan				
1	Manufacturer's Name			Nissan		Nissan		1		
2	Model	Model designation		WSN-30		WSN-40		2		
3	Load Capacity	Rated capacity	lb (kg)	3000 (1500)		4000 (2000)		3		
4	Load Center	Distance	in (mm)	24 (600)		24 (600)		4		
5	Power Type	Electric	volt	12	24	12	24	5		
6	Operator Type			Walkie Straddle		Walkie Straddle		6		
7	Tire Type	Front and rear		Rubber / Poly		Rubber / Poly		7		
8	Wheels	Number (x=driven) - front/rear		4 / 1x		4 / 1x		8		
DIMENSIONS		9	Mast	Max. fork height (MFH)	in (mm)	105.5 (2680)		105.5 (2680)	9	
		10		Freelift (FL)	in (mm)	51 (1295)		51 (1295)	10	
		11	Forks	Thickness x width	in (mm)	1.6 x 4.2 (40 x 106)		1.6 x 4.2 (40 x 106)		11
		12		Length	in (mm)	42.1 (1070)		42.1 (1070)		12
		13		Min. fork spread (o.d.)	in (mm)	8 (203)		8 (203)		13
		14		Max. fork spread (o.d.)	in (mm)	30 (762)		30 (762)		14
		15		Fork lowered height	in (mm)	2.0 (51)		2.0 (51)		15
		16	Overall Dimensions	Length - with forks	in (mm)	83 (2108)	88.3 (2242)	83 (2108)	88.3 (2242)	16
		17		Length - less forks	in (mm)	78.6 (1996)	83.9 (2131)	78.6 (1996)	83.9 (2131)	17
		18		Height - top of standard LBR	in (mm)	48 (1219)		48 (1219)		18
		19		Mast lowered (OHL)	in (mm)	72 (1829)		72 (1829)		19
		20		Mast extended with LBR	in (mm)	153.5 (3899)		153.5 (3899)		20
		21		Width - minimum outrigger i.d.	in (mm)	34 (864)		34 (864)		21
		22		Width - maximum outrigger i.d.	in (mm)	50 (1270)		50 (1270)		22
		23		Outrigger Height	in (mm)	4 (102)		4 (102)		23
		24	Turning Radius	Minimum outside	in (mm)	68.4 (1737)	73.6 (1870)	68.4 (1737)	73.6 (1870)	24
25	Min. Right Angle Stack	48" L x 40" W pallet (add clearance)	in (mm)	74 (1880)	79.3 (2014)	74 (1880)	79.3 (2014)	25		
26	Truck Weight	103.5" Mast, empty, no battery	lb (kg)	2200 (1000)		2400 (1090)		26		
PERFORMANCE		27	Speeds	Travel - full load	mph (kph)	2.4 (3.9)	2.6 (4.2)	2.4 (3.9)	2.3 (3.7)	27
		28		Travel - no load	mph (kph)	3.1 (5.0)	3.2 (5.2)	3.1 (5.0)	3.1 (5.0)	28
		29		Lift - full	fpm (mm/sec)	17 (86)	20 (102)	14 (71)	17 (86)	29
		30		Lift - empty	fpm (mm/sec)	28 (142)	38 (193)	28 (142)	38 (193)	30
		31		Lower - full	fpm (mm/sec)	50 (254)	50 (254)	55 (279)	55 (279)	31
		32		Lower - empty	fpm (mm/sec)	30 (152)	30 (152)	30 (152)	30 (152)	32
CHASSIS & WHEELS		33	Overall Width	Width	in (mm)	34.5 (876)		34.5 (876)		33
		34	Wheelbase	Distance between axles on centers	in (mm)	61 (1550)	66.3 (1684)	61 (1550)	66.3 (1684)	34
		35	Tire Size	Drive tire	in (mm)	10 x 5 (254 x 127)		10 x 5 (254 x 127)		35
		36		Load wheels - tandem	in (mm)	4 x 2.75 (102 x 70)		4 x 2.75 (102 x 70)		36
		37	Service Brake	Type		Drum and Shoe		Drum and Shoe		37
BATTERY		38	Type			Lead Acid		Lead Acid		38
		39	Compartment Size	Width x Height	in (mm)	34.5 x 31 (876 x 788)		34.5 x 31 (876 x 788)		39
		40		Length	in (mm)	8.25 (210)	13.5 (343)	8.25 (210)	13.5 (343)	40
		41	Amp Hr Capacity	Min / Max (6-hr)	Ah	375 / 750		375 / 750		41
		42	Weight	Minimum	lb (kg)	410 (187)	960 (436)	410 (187)	960 (436)	42
		43		Maximum	lb (kg)	725 (330)	1500 (681)	725 (330)	1500 (681)	43
		44	Lead Length	Position "B"	in (mm)	20 (508)		20 (508)		44
		45	Connector	type		SB-175 Grey		SB-175 Grey		45

NOTE: 12-Volt models are standard.

24-Volt model specifications based on larger 34.5" x 13.5" x 31"H battery compartment size.

Technical Information **WSN Series**

Standard Equipment

- 12-volt electrical system
- Premium heavy-duty motor
- Curtis PMC 1205 transistor travel controller
- Reversing switch in handle
- Electronic horn
- Curtis 701 solid state LCD hour meter
- Key switch
- Oil filter in hydraulic system
- 31" wide carriage
- 48" h x 32.6" w load backrest
- Fixed base legs – 34" to 50" (order in 1" increments)
- Duplex FFL mast: 72" OHL / 105.5" MFH / 51" FL
- Wire screen mast guard
- Fork lengths: 30", 36", 42"
- Fork spacing: 10" min. to 30" max. o.d.
- Rubber drive tire – 10" x 5"
- Tandem poly load wheels – 4" x 2.75"

Optional Equipment

- 24-volt electrical system with 8.25" or 13.5" wide battery compartment
- Fuel gauge type battery discharge indicator
- Battery discharge indicator with lift interrupt
- Battery compartment rollers with drop-in gates
- Choice of Duplex (high or low FL) or Triplex masts
- Adjustable base legs for greater load handling flexibility
- Pallet centering device assures uniform load stacking and reduced product and pallet damage
- Cold storage protection
- Side shifter with single function hydraulics and IHR
- Manual lift and lower levers for full feathering
- Non-marking rubber or polyurethane drive tires

Steer Control Features

Steering handle with outside stationary grips provides low-effort pull-down into the operating range. Thumb-operated butterfly speed controls inside the control head provide easy and precise truck control. Large safety reversing switch, on the control handle, reverses truck travel direction if operator contact is made. Control head features lift, lower, and horn buttons within convenient operator reach. Gas charged cylinder returns the handle with uniform force, while a rubber stop at the end of travel prevents switch shock.

Electrical

12-volt electrical system with heavy-duty series wound class 'H' insulated drive motor. PMC transistor travel controller for smooth, controlled acceleration, infinitely variable speed control, and increased energy efficiency. Key switch and solid state LCD hour meter are standard. Steer handle wiring harness constructed of extra flexible stranded tinned copper conductor wiring with silicone insulation for increased durability and reduced maintenance.

Drive Unit Assembly

Exclusive balanced drive system designed with drive motor, transmission and drive tire mounted in a vertical column. This stationary design greatly reduces steer effort, unbalanced torque conditions, and cable flexing, for enhanced reliability and reduced maintenance costs.

Brake System

Dual braking positions within upper and lower handle movement range enhance operating efficiency. The 7" diameter brake drum provides excellent braking response, with the largest braking surface in its class.

Hydraulic System

Hydraulic system features heavy-duty lift pump and motor, overload protection valve, solenoid release valve for lowering, check valve, and flow regulator. Return line filtering protects the system against environmental contaminants.

Steering

190° steering arc (95° each side of center) allows for precise maneuvering in tight spaces for increased operator efficiency. Steer handle is mounted to the bottom of drive unit for maximum leverage and steering ease.

Frame Assembly

Rugged frame with 4" x 4" solid steel base legs for maximum strength and durability. Base legs with tandem load wheels reduce friction and enhance wheel bearing life. Tapered base leg tips reduce the risk of pallet hang-up and assist in pallet positioning. Steel covers for rugged durability and component protection. Powder coat paint for a durable, high gloss, scratch resistant finish.

Battery

- Battery compartment: 34.5" x 8.25" x 31"
- Adjustable battery retainers
- Minimum battery weight: 410 lbs.
- SB-2 battery connector (175 Amp – grey)

Ease of Service

Removing five bolts allows quick and simple drive tire replacement. The hub has a built-in drive wheel puller to simplify the job. One screw removal, simplifies drive motor brush inspection. Lubrication fittings are easily accessible with the truck upright and the battery in place. Removal of four hood bolts allows quick access to internal components. Number coded electrical wiring simplifies wiring harness maintenance. One nut removal of the brake drum allows easy access for periodic inspection and maintenance.

Nissan Forklift Corporation
240 N. Prospect Street
Marengo, IL 60152 USA
Phone (815) 568-0061
Fax (815) 568-0179
www.nissanforklift.com

Nissan Forklift Corporation reserves the right to make product changes relating to colors, equipment or specifications without notice. For more information, contact your Nissan Forklift representative.

NISSAN
FORKLIFT

NISSAN
FORKLIFT

OP Platinum Series

Order Picker Models

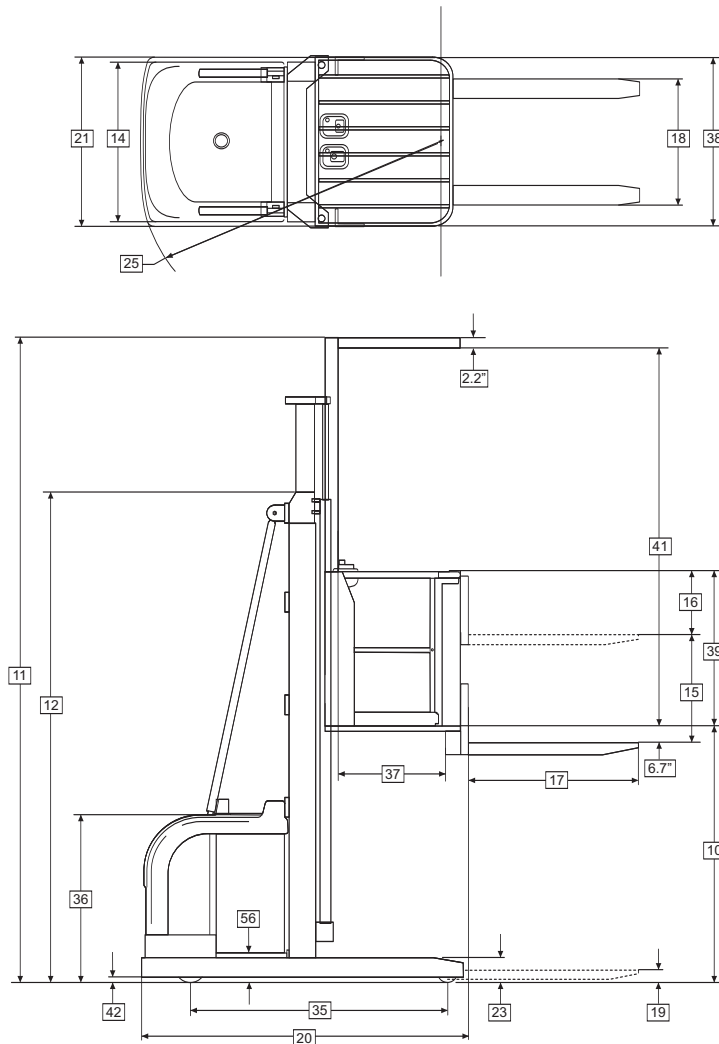
2,200 lb.
Capacity



OP Platinum series

Dimensions

OP22N
OP22HN



Mast Specifications & Rated Capacities

Mast Type	Model	Max. Platform Floor Height	Max. Extended Height	Overall Lowered Height	Free Lift	Rated Capacity at 24" Load Center
		in (mm) line 10*	in (mm) line 11*	in (mm) line 12*	in (mm) line 13*	lbs (kg) line 4*
THREE STAGE (full free)	OP22N163	163 (4150)	245 (6210)	91 (2315)	0 (0)	2200 (1000)
	OP22N181	181 (4600)	263 (6660)	91 (2315)	0 (0)	2200 (1000)
	OP22N204	204 (5200)	286 (7260)	98 (2475)	6 (160)	2200 (1000)
	OP22N216	216 (5500)	298 (7560)	102 (2575)	10 (260)	2200 (1000)
	OP22N240	240 (6100)	322 (8160)	110 (2775)	18 (460)	2090 (950)
	OP22HN258	257 (6550)	339 (8610)	116 (2925)	24 (610)	1870 (850)
	OP22HN278	277 (7050)	359 (9110)	122 (3090)	30 (775)	1650 (750)
	OP22HN305	305 (7750)	387 (9810)	131 (3325)	39 (1010)	1430 (650)
OP22HN324	324 (8250)	406 (10310)	138 (3490)	46 (1175)	1210 (550)	

*See chart on opposite page for line item.

Account for operator weight in determining load capacity.

2,200 lb. capacity

Main Truck Specifications

CHARACTERISTICS				Nissan Forklift	Nissan Forklift	
1	Manufacturer's Name			Nissan Forklift	Nissan Forklift	1
2	Model	Model designation		OP22N216	OP22HN278	2
3		Long model code		OPC/100DTFV1550	OPS/100DTFV1705	3
4	Rated Load Capacity		lb (kg)	2200 (1000)	1650 (750)	4
5	Load Center	Distance	in (mm)	24 (600)	24 (600)	5
6	Power Type	Electric	voltage	24v	24v	6
7	Operator Orientation	Stockpicker		Stand-Up	Stand-Up	7
8	Tire Type	Front & rear		Vulkollan	Vulkollan	8
9	Wheels	Number - front/rear (x=driven)		1x / 4	1x / 4	9
10	Mast	Maximum platform height	in (mm)	See Mast Table		10
11		Maximum extended height	in (mm)	See Mast Table		11
12		Overall lowered height	in (mm)	See Mast Table		12
13		Standard freelif	in (mm)	See Mast Table		13
14	Ergolift Fork Carriage	Mast width (outside rail width)	in (mm)	38.6 (980)	38.6 (980)	14
15		Fork carriage lift height	in (mm)	30.9 (785)	30.9 (785)	15
16	Forks	Top of raised fork to top of rail	in (mm)	13.4 (340)	13.4 (340)	16
17		Length x width x thickness	in (mm)	39.4 x 4.0 x 1.5 (1000 x 100 x 40)		17
18		Fork spread (OD) - maximum	in (mm)	31.5 (800)	31.5 (800)	18
19	Overall Dimensions	Fork lowered height (top of fork)	in (mm)	2.4 (60)	2.4 (60)	19
20		Length - to face of forks	in (mm)	87.8 (2230)	88.2 (2240)	20
21		Width - with standard platform	in (mm)	42.1 (1070)	46.1 (1170)	21
22	Straddle Legs	Height - to top of OHG	in (mm)	91.0 (2310)	91.0 (2310)	22
23		Height	in (mm)	6.9 (175)	6.9 (175)	23
24	Turning Radius	Width - outside-to-outside	in (mm)	42.1 (1070)	46.1 (1170)	24
25		Minimum outside	in (mm)	82.5 (2095)	83.1 (2110)	25
26	Min Right Angle Stack	Add load length & clearance	in (mm)	90.6 (2300)	90.9 (2310)	26
27	Speeds Maximum	Travel - loaded / unloaded up to 24" platform lift height	mph (km/h)	5.0 (8.0) / 5.6 (9.0)		27
28		Travel - loaded / unloaded over 24" platform lift height ¹	mph (km/h)	1.4 (2.2) / 1.5 (2.5)		28
29		Lift - loaded / unloaded	fpm (mm/sec)	39.4 (200) / 51.2 (260)		29
30		Lowering - loaded / unloaded	fpm (mm/sec)	98.4 (500) / 59.1 (300)		30
31	Gradeability Maximum	Full load / empty	%	5 / 5	5 / 5	31
32	Truck Weight	Empty, min. battery	lb (kg)	5955 (2700)	6350 (2880)	32
33	Tire Size	Drive tire - dia. x width	in (mm)	9.8" x 3.9" (250 x 100)		33
34		Load wheels (dual) - dia. x width	in (mm)	5.9" x 2.4" (150 x 60)		34
35	Wheelbase		in (mm)	66.7 (1695)	66.7 (1695)	35
36	Power Unit Height		in (mm)	39.4 (1000)	39.4 (1000)	36
37	Platform	Length	in (mm)	28.7 (730)	28.7 (730)	37
38		Width (standard platform)	in (mm)	41.4 (1050)	45.3 (1150)	38
39		Rail height (top of platform to top of rail)	in (mm)	36.2 (920)	36.2 (920)	39
40	Step-in Height	Platform lowered height	in (mm)	10.8 (275)	10.8 (275)	40
41	Headroom	Platform floor to bottom of OHG	in (mm)	78.7 (2000)	78.7 (2000)	41
42	Ground Clearance	Under frame, center of wheelbase	in (mm)	1.0 (25)	1.0 (25)	42
43	Service Brake	Type		Regen	Regen	43
44	Parking Brake	Type		Auto Spring-Applied / Electronic Release		44
45	Steering	On-demand		Electric Servo	Electric Servo	45
46	Traction Motor	Type / Control		DC / SepEx	DC / SepEx	46
47		Rating - 60 minute	HP (kW)	2.8 (2.1)	2.8 (2.1)	47
48	Pump Motor	Type / Control		DC / Contactor	DC / Contactor	48
49		Rating - 5 minute	HP (kW)	10.2 (7.6)	10.2 (7.6)	49
50	Battery	Type		Lead Acid	Lead Acid	50
51	Battery Compartment Size	L x W x H - Maximum ²	in (mm)	36.6 x 15.3 x 26 (930 x 385 x 660)		51
52	Recommended Battery Size	L x W x H - Maximum ²	in (mm)	36.3 x 15 x 25.7 (922 x 381 x 652)		52
53		Capacity - Min. / Max.	Ah	330 / 720	330 / 720	53
54	Battery Weight	Minimum / Maximum	lb (kg)	995 (450) / 1430 (650)		54
55	Battery Connector	Type		SBE160 Red	SBE160 Red	55
56	Battery Roller Height	From floor to top of roller	in (mm)	9.2 (235)	9.2 (235)	56

NOTE: 1. At or above 177.1" (4500 mm) platform lift height, travel speed is 0 mph (0 km/h) for steer angles of 10° or greater.
2. Battery requires special case with 25.7" (652) high center dividing wall and special connector location.

Technical Information **Platinum OP Series**

Standard Equipment

1. Curtis 1243 SepEx drive control
2. 2.8 HP SepEx drive motor
3. 10.2 HP hydraulic pump motor
4. 24-volt electrical system
5. Ergolift independent fork lift
6. Travel and steering control pods on mast side
7. Key switch, electronic horn, and hand operated presence switch
8. Spyglass display providing hour meter and battery discharge indicator with lift interrupt
9. Straight steering indicator
10. Electronic power steering
11. Emergency power disconnect
12. Cantilever overhead guard with plexiglass mast guard
13. Amber flashing light on drive unit
14. Spacious operator platform with cushioned floor mat
15. Rounded operator platform railing
16. Hinged platform side gates with lift and travel interlock
17. Chill storage ready: for temperatures down to +34°F (+1°C)
18. Battery compartment rollers
19. 39.4" long forks standard
20. Adjustable fork width: maximum 31.5" O.D. fork spread
21. Vulkollan poly drive tire
22. Vulkollan poly load wheels

Optional Equipment

1. 31.5" or 45.3" long forks
2. Adjustable fork width: maximum 55.1" O.D. fork spread
3. Travel and steering control pods on fork side
4. Lift limit switch
5. Lift limit switch with override
6. Drive stop at specified mast height
7. Cold storage ready: for temperatures down to -31°F (-35°C), includes wire screen mast guard
8. Rubber bumper on bottom front of drive unit
9. Left and right side work lights
10. Clip board document holder
11. Various platform widths

Enhanced Operator Comfort & Productivity

The Platinum OP Series is built for efficiency and ergonomics, with features and performance that make the operator's work easier and more productive.

The low step height is ideal for repeatedly getting on and off the truck throughout the shift. The floorboard includes an anti-fatigue, cushioned floor mat, and floats on vibration isolators to dampen the

effects of riding over floor joints, for a smooth and comfortable ride.

The OP's operator area is designed for maximum visibility and enhanced operator confidence, with a forward stance design, spacious platform, and smart operator controls. The ergonomic, dual control pods offer simultaneous control of drive, lift/lower, and horn functions. The steering control pod includes a straight steering indicator, plus a mini steering wheel, providing precise and ergonomic steering. The proportional steering is automatically adjusted based on travel speed. The travel control pod includes a horn button, platform lift/lower control, speed/direction control, and an operator presence button. Both pods offer adjustable height and angle for customized operator comfort. A battery discharge indicator provides a graphical indication of the battery charge remaining, and includes lift interrupt when the battery level is low.

The OP Series' standard safety features include: plexiglass mast guard, rugged cantilever overhead guard and hinged side gates, with lift and travel interlock if the gates are raised. A flashing amber light warns that the truck is operating in the area. The mast and chassis design together with a long wheelbase, offer exceptional stability for operating at high picking heights. Travel speed is reduced when the platform is above transport height. An optional lift limit switch is ideal in applications with restrictive ceiling heights.

Simpler Picking

The OP Series' recessed controls, and flat platform floor, with no protruding pedals, provides an uncluttered environment for picking. For increased comfort and productivity, heavy-duty railing and side gates provide an enclosed platform, allowing the operator to move freely within the platform confines, eliminating the requirement for an operator to wear an uncomfortable belt or harness, and without the interference of a tether mechanism.

The platform's protective rail has a contoured, well rounded design to slide heavy cartons across, minimizing sharp edges, to reducing damage to product.

Thanks to Nissan Forklift's **Ergolift**, the pallet is always at the right height for increased productivity. The Ergolift provides ease of picking, by utilizing a secondary mast (with 30.9" lift) on

the fork side, allowing the load to raise to a more convenient height for the picker. Ergolift increases productivity by making the lift from picking position to pallet easier, reducing the need for the operator to repeatedly bend down to stack goods on the pallet. The compact lift unit takes very little space and does not interfere with the layout of the cab. With Nissan Forklift's Ergolift, the picking pallet is always at the right height for placing picked items, providing enhanced ergonomics, and resulting in increased picking operations.

Efficient Performance

A heavy-duty 2.8 HP, separately excited (SepEx) drive motor provides high power and torque to handle tough applications. Quick acceleration, combined with rapid lifting and lowering while traveling between picking positions, contribute to truck and operator productivity.

The OP Series' drive system provides maximum efficiency in all load ranges, in addition to recycling of braking energy to the battery.

Battery and Electrical

24-volt electrical system incorporates a transistor drive controller, eliminating forward and reverse contactors, and providing electronic travel speed control for precise, infinitely variable forward/reverse travel speeds. All electrical circuits and major components are fuse protected. An emergency power disconnect is located on the display console.

Brake System

A spring applied and electrically released, electric disc brake assembly is integrally mounted on the drive motor armature shaft, multiplying braking force through the double reduction transmission gearing. While the operator presence switch is depressed, (located in the travel control pod) the brake is electrically released, ensuring operator presence during travel. When the switch is released, the regenerative braking function within the truck controller is activated prior to brake engagement to assure a smooth, complete stop.

Truck and Mast Design

The modern styling of the OP's chassis includes a low profile power unit for improved visibility. The three-stage, rugged, high visibility mast, with full free lift, incorporates an interlocking I-beam, and uses heavy-

duty ball bearing rollers for durability and long life. An upper attachment joint enables the mast to be pivoted down to a horizontal position for easier truck transport and delivery.

Drive Unit

The OP's vertically mounted drive unit assembly features a spiral bevel and helical gear drive train, operating in an oil bath, for quieter operation and longer life. Motor brushes are positioned with convenient access for inspection and service. Power transmission through gearwheels gives enhanced performance.

The motor is rigidly mounted and the gearbox rotates. An electric steer system offers a full 180° steering range for exceptional maneuverability in tight warehouse confines. A large 9.8" diameter drive tire helps absorb shock, for improved operator comfort during travel.

Hydraulics

A heavy-duty, series wound hydraulic motor, with integrated gear type pump, delivers high lift speeds, for enhanced performance. Soft closing valves dampen platform stops for improved operator comfort. A down flow regulator valve allows for a controlled descent in the event of a hydraulic failure.

Reduced Maintenance for Lower Ownership Costs

Daily inspection of the battery through the inspection hatch is simple. The battery rests on rollers for easy access. Fault code history, and automatic motor braking, to minimize brake wear, all contribute to maximum uptime.

Access to the truck's major components is easy, so service is quick and simple. The hydraulic motor/pump and the electric/steering controller systems tilt-down conveniently for rapid, practical servicing. Daily battery checks are made through a flip-top panel, while the battery sits on rollers for rapid changeover.



SS-OP 01-12
Printed in U.S.A.

www.nissanforklift.com



NISSAN
GREEN PROGRAM



Scan for More Information

Nissan Forklift, Platinum, OPTVIEW, Nomad, and the Nissan Forklift logo are all registered trademarks of Nissan Forklift Corporation, North America. Nissan Forklift Corporation reserves the right to make product changes relating to colors, equipment, specifications or available options without notice. For more information, contact your Nissan Forklift representative.

NISSAN FORKLIFT A Wholly Owned Subsidiary of Nissan Motor Co. Ltd.

NISSAN FORKLIFT

