

NISSAN
FORKLIFT

APX Series

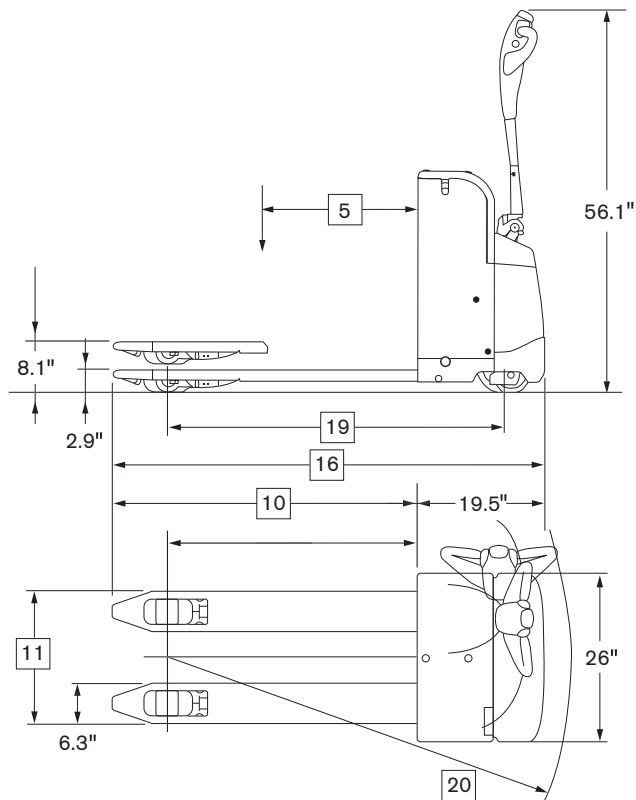
Advanced, AC Powered, Low-Lift Walkie Pallet Truck

4,400 lb.
Capacity



Dimensions

APX45N



Features



Control Handle Keypad The control handle keypad provides PIN codes access to turn the truck on without a key. Up to 100 driver ID numbers can be saved, with each assigned to one of four adjustable performance modes.



Compact Robust Design The APX Series features a compact, robust, ergonomic design. Its flexible connection between the drive-unit and load-unit provides optimized traction over dock plates or rough floors.



Offset Tiller Arm The offset tiller arm allows the operator to comfortably walk beside the truck for easy operation, while also providing an excellent view of the forks, especially with tall loads.

4-Point Chassis The 4-point chassis, with 2 wheels on the drive side (drive wheel and caster wheel) plus 2 wheels on the load side, provides enhanced stability.

4,400 lb. capacity

Main Truck Specifications

CHARACTERISTICS	1	Manufacturer's Name		Nissan	1	
	2	Model	Model designation	APX45N	2	
	3		Long model code	PLL200	3	
	4	Load Capacity		lb (kg)	4400 (2000)	4
	5	Load Center		in (mm)	24 (600)	5
	6	Power Type	Electric	volt	24	6
	7	Operator Type			Walkie	7
	8	Tire Type	Drive / caster / load wheels		Rubber / Vulkollan / Vulkollan	8
	9	Wheels (x=driven)	Drive / caster / load wheels		1x / 1 / 2	9
FORKS	10	Size - Standard Fork	Nominal length	in (mm)	46.9 (1190)	10
	11		Outside spread	in (mm)	26.8 (680)	11
	12		Individual Fork Width	in (mm)	6.3 (160)	12
	13		Thickness	in (mm)	1.9 (48)	13
	14	Height - Standard Fork	Raised position	in (mm)	8.1 (205)	14
15	Lowered position		in (mm)	2.95 (75)	15	
DIMENSIONS	16	Overall Dimensions	Total length (to tip of forks)	in (mm)	66.3 (1685)	16
	17		Head length (to face of forks)	in (mm)	19.5 (495)	17
	18		Overall width	in (mm)	26 (660)	18
	19	Wheelbase	Forks lowered	in (mm)	51.9 (1320)	19
	20	Turning Radius	Minimum outside	in (mm)	61.4 (1560)	20
21	Right Angle Stacking ¹	48" L x 40" W pallet	in (mm)	89 (2261)	21	
PERFORMANCE	22	Speed - Travel	No load	mph (kph)	3.7 (6.0)	22
	23		Full load	mph (kph)	3.4 (5.5)	23
	24	Speed - Lift	No load	sec.	3.0	24
	25		Full load	sec.	4.5	25
	26	Gradeability - Max.	No load / Full load	%	10 / 8	26
	CHASSIS	27	Truck Weight	Standard forks (without battery)	lb (kg)	630 (285)
28		Tires / Wheels	Drive tire - dia. x width	in (mm)	9.1 x 2.8 (230 x 70)	28
29			Caster wheel - dia. x width	in (mm)	5.5 x 2.4 (140 x 60)	29
30			Load wheels - dia. x width	in (mm)	2.95 x 3.9 (75 x 100)	30
31		Drive system	Drive motor	HP (kW)	1.34 (1.0)	31
32			Drive controller	type	AC CAN	32
BATTERY	33	Battery Compartment Size	L x W x H	in (mm)	25.5 x 8.1 x 25.5 (645 x 205 x 645)	33
	34	Amp Hr Capacity	Maximum rate - 5-hr / 6-hr	Ah	250 / 260	34
	35	Weight	Minimum / maximum	lb (kg)	310 (140) / 470 (215)	35
	36	Lead Length	Position "B"	in (mm)	16.9 (430)	36
	37	Connector		type	80A DIN Red	37

¹ Add 6-8" for ease of operation. Includes 1" clearance on each side of load.

Technical Information **APX Series**

Standard Equipment

1. AC drive motor and controller system
2. Infinitely variable forward/reverse drive control
3. 24-volt electrical system
4. Offset, ergonomic tiller arm
5. Wide steer head includes thumb operated butterfly speed control, with lift, lower and horn buttons, and safety reversing switch
6. Slow travel with the handle upright (crawl speed)
7. Control panel with key pad includes PIN access with 4 adjustable performance settings
8. Backlit LCD displays date, time, error codes hour meter, and battery discharge indicator (with lift cut out)
9. Adjustable auto power off
10. Chill storage protection to +34°F (+1°C)
11. 4-point chassis with cushioned caster wheel
12. 2-section chassis
13. Pallet entry rollers
14. 9.1" x 2.8" rubber drive tire
15. 5.5" x 2.4" Vulkollan caster wheel
16. 2.95" x 3.9" Vulkollan single load wheels
17. 46.9" x 6.3" forks

Optional Equipment

1. 36" or 42" long U.S. style forks
2. Industrial battery pack
3. 47.2" high load backrest
4. Key switch (bypasses PIN access)
5. Cold storage protection to -31°F (-35°C)
6. Antistatic ground strap
7. Vulkollan drive tire

Operator Control Features

The offset tiller arm allows the operator to comfortably walk beside the truck for easy operation, while also providing an excellent view of the forks, especially with tall loads. A wide steering arc allows exceptional turning radius with minimal effort. Spring-loaded handle and roomy steering control head promote effortless movement into the operating range. Large thumb or fingertip-actuated butterfly speed controls provide easy and precise operation. Ergonomic layout of lift, lower and

horn buttons deliver comfortable operation. Large switch on the end of the control head changes the truck's travel direction if operator contact is made. Maximum travel speed can be reduced through the creep switch in the control keypad.

For ease of operation in tight areas, a tiller-up drive switch allows the APX to be driven at creep speed with the handle in a vertical position.

The modern, contoured design, minimizing sharp edges to reduce damage to product. Short truck length and narrow width allow the APX to maneuver in narrow or restricted areas. Fork entry/exit slides provide easy access and positioning between pallet boards.

The control handle keypad provides PIN codes access to turn the truck on without a key. A stand-by mode allows temporary stops without the PIN codes needing re-entered to restart the truck. An optional key-switch bypasses the PIN codes to provide access to the truck. If the truck is left on, after a programmable time delay will enter the stand-by mode. After further time delay, the truck will power off to conserve energy.

The battery discharge indicator provides the operator with a graphical indication of the battery charge remaining and includes lift cut out when the battery level is low. On-board diagnostics and self-check at startup alert the operator if any error codes are encountered.

Efficient performance

Heavy-duty 1.3 Hp, three-phase AC drive motor provides high power and torque to handle tough applications, with peak performance throughout the battery range. Its advanced motor controller/AC FET inverter electronically distributes power, as needed, to the AC drive motor or DC pump motor for enhanced efficiency. Its AC design eliminates forward and reverse contactors, and uses electronic travel speed control for precise, efficient performance.

Battery

An optional battery pack, with built-in charger, features four maintenance-free, heavy-duty batteries with an 80A DIN red connector. Its automatic, built-in SCR charger features stop/start capability, LED display, and plugs into any grounded 110/120 volt AC outlet for easy charging.

- Battery compartment size: 25.5"L x 8.1"W x 25.5"H
- Maintenance-Free Battery Pack: 195 Ah/6h rating

Smart Electric Brake

Dual braking positions within the upper and lower handle movement range. The drive unit is equipped with an electrical disc brake system that utilizes regenerative motor torque prior to brake actuation for less component wear and longer life.

Frame and Chassis

The APX Series features a robust chassis with a patented linkage system. The 4-point chassis, with 2 wheels on the drive side (drive wheel and caster-wheel) plus 2 wheels on the load side, provides enhanced stability. A flexible connection between the drive-unit and load-unit provides constant ground contact and exceptional traction over dock plates and rough floors.

Fork Assembly

Forks are 46.9" long and 6.3" wide, with 26.8" wide outside fork spread. Optional 42" long forks are also available, as well as various length Euro style forks. Pallet entry rollers facilitate pallet entry and exit.

Wheels

9.1" diameter x 2.8" wide rubber drive wheel features tapered roller bearings in sealed oil filled case. Vulkollan caster and load wheels, with string guards, offer increased floor surface contact and help prevent debris from getting into axles and bearings.

Hydraulics

Heavy-duty integrated lift pump and DC motor features an overload valve to protect hydraulic components, and includes a check valve and flow regulator. Hydraulic system features an integrated motor, pump, fluid reservoir,

relief valves and filter, with a single hose connecting the pump to the lift cylinder.

Drive Unit

Quiet, beveled gear drive system with sealed ball bearings, provides solid performance with low steer effort. Five-nut removal of the drive tire simplifies replacement when needed. The entire power train is fully enclosed and operates in an oil bath, providing long life and minimal maintenance. Heavy-duty tapered roller bearings reduce steering effort and offer added durability.

Ease-of-Maintenance

Brushless AC drive motor uses fewer components and requires less maintenance for lower operating costs. CAN-Bus communication reduces the number of wires in the control harness, for reduced maintenance. On-board diagnostics and troubleshooting access through the control panel key pad, without the need for a separate handset tool.

Removable cover exposes all major mechanical and electrical components for inspection and maintenance. An emergency cut-out allows the magnetic brake to be released without power, to tow the truck if a power failure occurs. The APX's AC travel control system eliminates directional contactors; maintenance needs and associated costs are greatly reduced.



ISO 14001:2004
NISSAN GREEN PROGRAM

Nissan Forklift Corporation reserves the right to make product changes relating to colors, equipment, specifications or available options without notice. For more information, contact your Nissan Forklift representative.

NISSAN
FORKLIFT

NISSAN
FORKLIFT

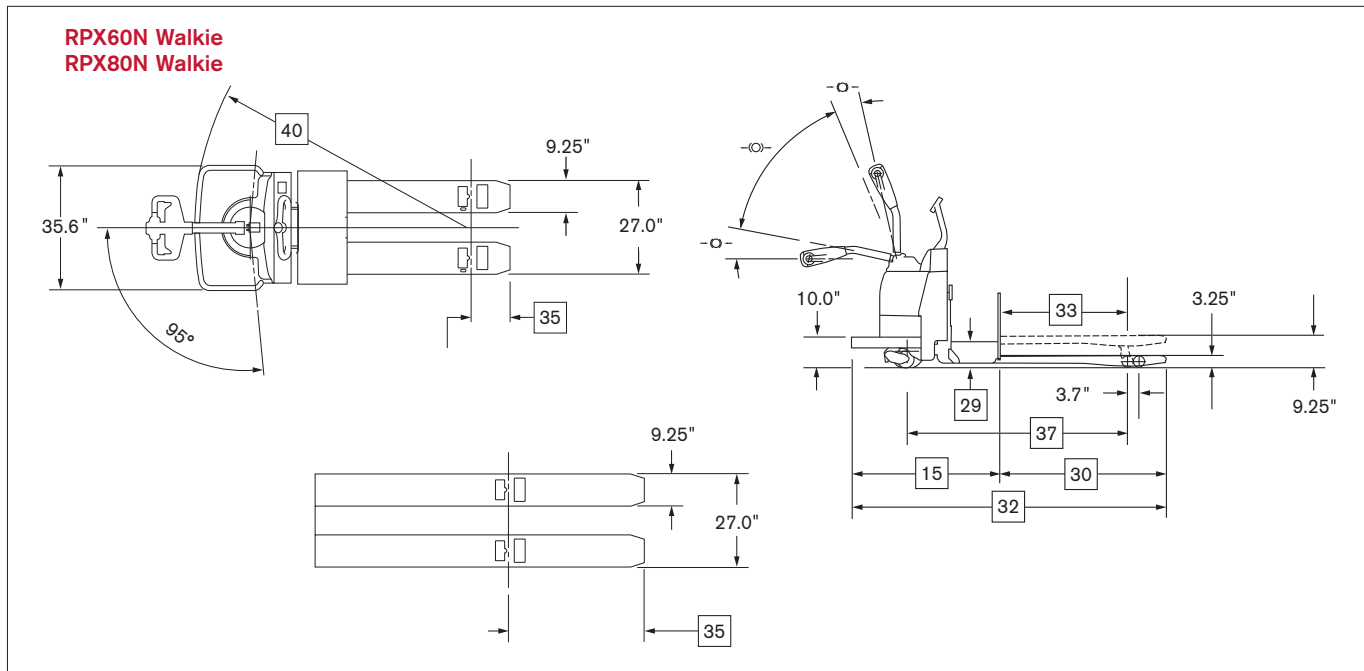
Platinum RPX Series

Walkie & Walkie/Rider Pallet Truck / **AC-Powered Models**

6,000 & 8,000 lb.
Capacities



Dimensions



Options



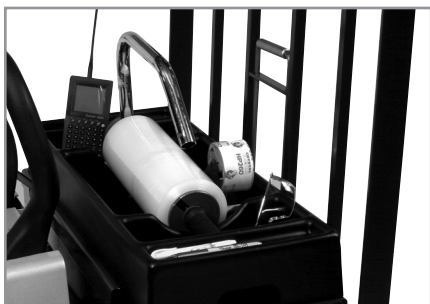
Coast control allows truck to slowly coast to a complete stop, for more efficient order picking. Actuated manually using a toggle lever or by an electronic switch (shown).



Load backrests have a slip-on or tilt down design available to facilitate battery change out. Tilt down includes Nissan's EZ release feature.



Optional multi-function LCD digital display includes PIN codes to restrict truck access, selectable performance modes, battery discharge indicator and speedometer. It also offers on-board diagnostics, troubleshooting and adjustment.



Magnetic convenience tray adheres to the top of the battery box. Includes shrink wrap holder and room for operator's tools.



Battery roller design provides easier battery change out. Includes removable side gates.



Sidetracker promotes greater productivity by allowing operator to walk beside truck while performing low level order picking¹.

¹ Must be ordered with manual Coast Control or electronic Click-n-Coast feature.

6,000 & 8,000 lb. capacities

Main Truck Specifications

CHARACTERISTICS	6000		8000		Line Item
	Model	Capacity	Model	Capacity	
1	Manufacturer's Name		Nissan	Nissan	1
2	Model	Model designation	RPX60N	RPX80N	2
3		Long model code	RPXT2W2G60NV	RPXT2W2G80NV	3
4	Load Capacity	Rated capacity	6000 (2720)	8000 (3630)	4
5	Power Type	Electric	24 Volt	24 Volt	5
6	Operator Type		Walkie / Rider	Walkie / Rider	6
7	Tire Type	Drive tire	Solid Rubber	Solid Rubber	7
8		Caster wheels	Poly	Poly	8
9		Load wheels	Vulkollan Poly	Vulkollan Poly	9
10	Wheels	Drive/caster/load (x=driven)	number	1x / 2 / 2	10
11	Fork Size	Outside spread	in (mm)	27 (685)	11
12	Fork Height	Raised position	in (mm)	9.25 (235)	12
13		Lowered position	in (mm)	3.25 (82.5)	13
14	Individual Fork Width		in (mm)	9.25 (235)	14
15	Overall Dimensions	Head length	in (mm)	42.9 (1090)	15
16	Width	Chassis	in (mm)	35.6 (905)	16
17	Tires / Wheels	Drive tire -dia. x width	in (mm)	10 x 5 (254 x 127)	17
18		Caster wheels - dia. x width	in (mm)	5 x 2.5 (127 x 64)	18
19		Load wheels - dia. x width	in (mm)	3.25 x 6 (83 x 152)	19
20	Speed - Travel	No load	mph (kph)	9.1 (14.6)	20
21		Full load	mph (kph)	6.6 (10.6)	21
22	Speed - Lift / Lower	No load	sec.	3.6 / 5.1	22
23		Full load	sec.	5.1 / 4.8	23
24	Compartment Size ¹	Length x Width x Height	in (mm)	31.9 x 13.25 x 32 (810 x 335 x 815)	24
25	Amp Hr Capacity	Max (6-hr)	Ah	750	25
26	Weight	Min / Max	lb (kg)	900 / 1500 (410 / 680)	26
27	Lead Length	Position "B"	in (mm)	20 (508)	27
28	Connector		type	SB-175 Red	28
29	Battery Roller (Option)	Height from floor (forks lowered)	in (mm)	7.9 (200)	29

¹ Battery compartment size with adjustable retainers - 30.9 x 13.25 x 32 (785 x 335 x 815); w/optional rollers & side gates - 31.1 x 13.25 x 32 (790 x 335 x 815)

Aisle Specifications

RPX Walkie/Rider Pallet			Single Pallet			Double Pallet			Line Item	
			36	42	48	84	96			
SPECIFICATIONS	30	Fork Length	Nominal	in	36	42	48	84	96	30
	31		Actual	in (mm)	35.7 (910)	41.7 (1060)	47.7 (1210)	83.7 (2125)	95.7 (2430)	31
	32	Overall Truck Length		in (mm)	78.8 (2000)	84.8 (2155)	90.8 (2305)	126.8 (3220)	138.8 (3530)	32
	33	Face of Forks to Center of Load Wheel	Forks raised	in (mm)	24.4 (620)	30.4 (770)	36.4 (925)	56.5 (1435)	56.5 (1435)	33
	34		Forks lowered	in (mm)	28.0 (710)	34.0 (865)	40.0 (1015)	60.1 (1525)	60.1 (1525)	34
	35	Center of Load Wheel to Tip of Forks	Forks raised	in (mm)	11.3 (290)	11.3 (290)	11.3 (290)	27.2 (690)	39.2 (995)	35
	36		Forks lowered	in (mm)	7.7 (195)	7.7 (195)	7.7 (195)	23.6 (605)	35.6 (905)	36
	37	Wheelbase	Forks raised	in (mm)	51.6 (1310)	57.6 (1465)	63.6 (1615)	83.5 (2120)	83.5 (2120)	37
	38		Forks lowered	in (mm)	55.2 (1405)	61.2 (1555)	67.2 (1710)	87.1 (2215)	87.1 (2215)	38
	39	Grade Clearance	Forks raised w/pallet	%	36.4	32.5	29.4	22.4	22.4	39
	40	Turning Radius		in (mm)	68.0 (1730)	73.9 (1875)	79.7 (2025)	99.5 (2530)	99.5 (2530)	40
	41	Right Angle Stacking Aisle ¹	40", 42, 48" Load Width	in (mm)	78.0 (1980)	84.0 (2130)	90.0 (2285)	128.0 (3230)	140.0 (3540)	41
	42	90° Equal Intersecting Aisle ¹	40" Load Width	in (mm)	66.2 (1685)	69.3 (1760)	72.4 (1840)	83.6 (2125)	84.7 (2150)	42
	43		42" Load Width	in (mm)	67.2 (1710)	70.3 (1785)	73.4 (1865)	84.6 (2150)	85.8 (2180)	43
	44		48" Load Width	in (mm)	70.3 (1785)	73.4 (1865)	76.2 (1945)	87.8 (2230)	88.9 (2260)	44
45	Truck Weight	No load, without battery	lb (kg)	1110 (505)	1140 (515)	1165 (530)	1305 (590)	1340 (610)	45	

¹ Add 6-8" for ease of operation. Includes 1" clearance on each side of load.

Platinum RPX^{series}

Technical Information

Standard Equipment

- 24-volt electrical system
- Brushless AC drive motor and controller system
- Multi-function digital display includes battery discharge indicator with lift lockout, (3) hour meters, and fault-code display
- Digital CAN-bus communications
- Programmable performance parameters
- Ergonomic control handle with butterfly speed control
- Fingertip control of lift, lower, and horn buttons
- Cruise control with anti-tapedown
- Large operator platform with anti-fatigue cushioned mat
- Electronic horn
- On/off key switch
- Tapered fork tips with pallet entry/exit slides
- Adjustable battery retainers
- SB-175 red battery connector
- Vulkollan poly load wheels with string guards
- Rubber drive tire with string guard
- Heavy-duty, spring-loaded caster wheels with string guards
- Regenerative braking
- Spring applied/electronically released brake system
- Sealed switches and controller for wet, cooler and freezer applications
- Motor and controller thermal protection
- Hydraulic overload protection valve
- Powder-coat paint finish

Optional Equipment

- Multi-function LCD display with:
 - PIN access
 - Selectable performance modes
 - BDI and speedometer
 - On-board diagnostics and troubleshooting
- Magnetic mount convenience tray with stretch wrap holder
- Manual or electric coast control
- Sidetracker (requires coast control)
- Anti-slip platform covering
- Tilt-down load backrest with EZ release (48" or 60" extension)
- Slip on/off load backrest (48" or 60" extension)
- Battery compartment rollers with side gates
- Battery gate interlock
- Travel alarm
- Toggle switch
- Fork auto-lift function
- Poly load wheels
- Non-marking rubber, traction treaded rubber or flat poly drive tire options

Ergonomics & Operator Comfort

A spacious operator platform and compact hood design offers the operator a variety of comfortable positions for reduced fatigue and sustained productivity. Cushioned platform mat provides added comfort.

A wide, 190° steering arc and large, sealed, ball-bearing steering mechanism allows exceptional turning with minimal effort. Spring-loaded handle and roomy steering control head promote effortless movement into the operating range. The control handle features tubular steel construction and the control head is constructed from a fiberglass-filled polymer composite, with internal steel reinforcements, for higher strength and increased durability.

Thumb or fingertip-actuated butterfly speed controls provide easy and precise operation. Ergonomic, fingertip layout of the soft-touch lift, lower and horn buttons delivers comfortable operation. Large switch on the end of the control head changes the truck's travel direction if operator contact is inadvertently made.

Soft grip, high-speed grab bar provides the operator maximum security and comfort. A center mounted control pod provides efficient operation of lift/lower, high speed and horn functions. Standard cruise control is activated by one touch of a button, allowing the operator to maintain high-speed travel, without continuously needing to hold down the button down.

Optional coast control feature allows truck to coast for more efficient order picking. Actuated by either a manual toggle lever at the base of the handle, or by an electronic switch located near the butterfly speed control.

Switches conveniently located on either side of the control handle activate the optional sidetracker feature. Used in conjunction with coast control, this feature allows the operator to walk beside the truck while performing low-level order picking, for greater efficiency and productivity.

Efficient Performance

Heavy-duty 5.2Hp, brushless, three-phase AC drive motor provides high power and torque to handle high productivity operations, with peak performance throughout the battery range. Longer run times per battery charge are achieved by using less energy per cycle.

For enhanced efficiency, its advanced motor controller/AC inverter electronically distributes power as needed to the AC drive motor or DC pump motor. This system offers programmable regenerative neutral braking and proportional plugging. The AC design eliminates forward and reverse contactors, and uses electronic travel speed control for precise, efficient performance.

Optional Multi-Function LCD Display

An optional multi-function LCD display offers PIN codes to restrict truck access, selectable performance modes for customized productivity, and a battery discharge indicator with graphic representation of remaining battery charge. Plus, with its on-board diagnostics, troubleshooting, and adjustment capabilities, a service tech can make adjustments and perform maintenance without the need for a separate handset tool.

Smart Electric Brake

Electrical braking system utilizes regenerative motor torque prior to disc brake actuation, for less component wear and longer life. The spring-applied/electronically released disc brake system eliminates needed adjustments, resulting in reduced maintenance and lower operating costs. Brake actuation occurs when the handle is in the upper and lower braking range.

Fork Assembly

Forks are 9¹/₄" wide and constructed from 1¹/₄" plate steel, and designed with a reinforced tip for extra durability. Various lengths available for both double and single pallet fork options. All come with standard 27" wide fork spread.

Proven, push-type lift linkage design uses rugged 1¹/₂" x 1¹/₂" solid steel tie rods to absorb high impact shocks caused by dock boards and dock plates. Push type design achieves full 6" of lift while preventing the tie rods from extending beyond the fork plane. This design also reduces maintenance since no adjustments are needed.

Alloy steel fork slides facilitate pallet entry and exit eliminating the need for entry rollers or discs. Tie rods are positively aligned and pinned to eliminate the need for field adjustments. Full-length, angle iron reinforcements enhance torsion strength for increased durability and longer life.

Optional Auto-Lift

Prevent fork drag across uneven floors using this option. Once the forks are lowered, release the button, then they automatically lift 2¹/₂".

Wheels

6" wide Vulkollan poly load wheels with dual bearings offer increased floor surface contact and string guards help prevent debris from getting into axles and bearings.

Hydraulics

The heavy-duty integrated lift system (including DC motor, lift pump and fluid reservoir) features an overload valve to protect hydraulic components, and includes a check valve and flow regulator. No lift limit switch is needed since the controller cuts out pump.

Drive Unit Assembly

Quiet, spiral beveled gear drive system with sealed ball bearings, provides solid performance with low steer effort. Five-nut removal of the drive tire simplifies replacement when needed.

Ease of Maintenance

Brushless AC drive motor uses fewer components and requires less maintenance for lower operating costs. Easily accessible, rotation sensing encoder is externally mounted on the drive motor for simplified replacement. As an added feature, the truck's motor and controller feature thermal protection system which slows or shuts down the truck in response to high temperatures.

Digital CAN communication between the controller and control handle reduces the number of wires in the control handle harness, for reduced maintenance. Hall Effect speed and acceleration control sensor simplifies maintenance and limits downtime due to its non-contact design, with no mechanical wiping action, potentiometers, or heaters. On-board diagnostics simplifies maintenance.

One-piece cover with two-bolt removal makes access to the drive unit, and major components quick and easy. All lubrication fittings are easily accessible with the truck upright.

Environmental

This truck is ideal for use across multiple environments. All components are designed to withstand wet, cold and/or freezer applications to -20° F (-28.9° C). The main controller features an ingress protection rating of IP65 against dust and moisture intrusion.



ISO 14001:2004
NISSAN GREEN PROGRAM

Nissan Forklift Corporation reserves the right to make product changes relating to colors, equipment, specifications or available options without notice. For more information, contact your Nissan Forklift representative.

NISSAN FORKLIFT

NISSAN
FORKLIFT

Platinum SPX Series

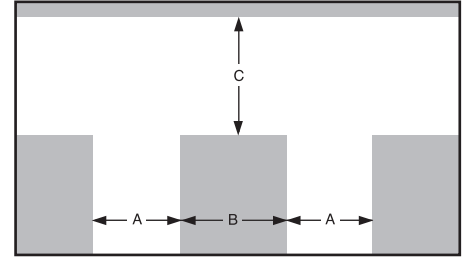
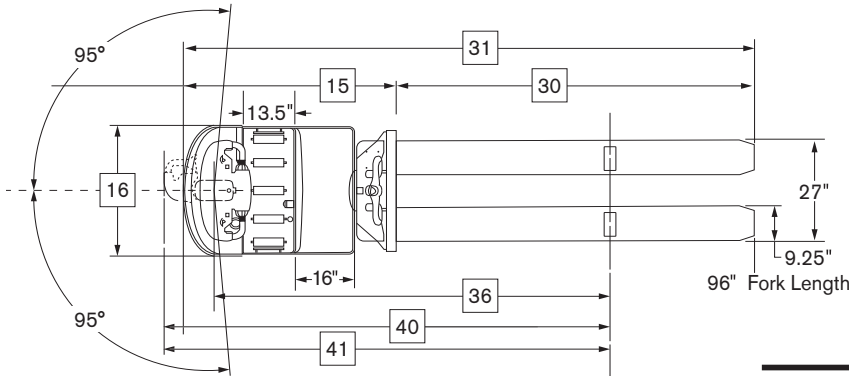
Center-Control, Walkie/Rider Pallet Truck / **AC-Powered Models**

6,000 & 8,000 lb.
Capacities



Dimensions

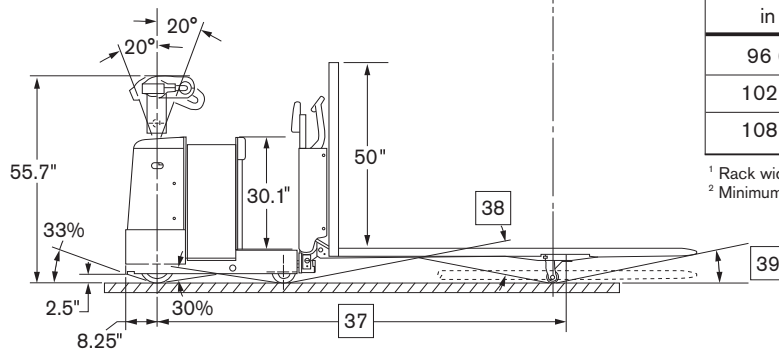
SPX60N Walkie/Rider
SPX80N Walkie/Rider



Intersecting Aisle Requirements

A Working Aisle in (mm)	B Rack Width ¹ in (mm)	C Intersecting Aisle ² in (mm)
96 (2440)	102 (2590)	119 (3015)
102 (2590)	102 (2590)	111 (2810)
108 (2745)	102 (2590)	105 (2650)

¹ Rack width calculated using 48" pallets and additional 6" needed for bracing.
² Minimum required aisle size to make a turn from one adjacent aisle to the next.



Fork Length Selection Guide

Single Pallet Handling:

Size the forks to the exact pallet length. The load wheels will drop in the second opening of the pallet.

Double Pallet Handling:

Size the forks to the exact pallet combination length. The load wheels should be specified to drop in the first opening of the second pallet to reduce the turning radius of the truck.

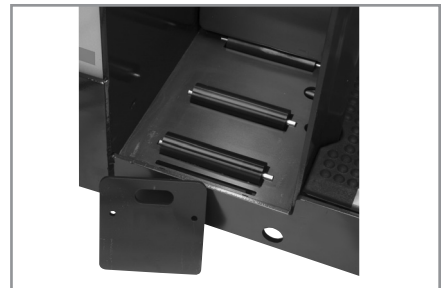
Contact your Nissan Forklift sales representative for details about load wheel location or fork length requirements for your application.



Adjustable steerhead includes two butterfly controls, allowing thumb or fingertip actuation of travel and direction.



Optional multi-function LCD digital display includes PIN codes to restrict truck access, selectable performance modes, battery discharge indicator and speedometer. It also offers on-board diagnostics, troubleshooting and adjustment.



Battery roller design provides easier battery change out. Includes removable side gates.

6,000 & 8,000 lb. capacities

Main Truck Specifications

				Nissan	Nissan		
CHARACTERISTICS	1	Manufacturer's Name		Nissan	Nissan	1	
	2	Model	Model designation	SPX60N	SPX80N	2	
	3		Long Model Code	SPXT2W3G60NV	SPXT2W3G80NV	3	
	4	Load Capacity	Rated capacity	lb (kg)	6000 (2720)	8000 (3630)	4
	5	Power Type	Electric		24 Volt	24 Volt	5
	6	Operator Type	Stand-up, center control		Walkie / Rider	Walkie / Rider	6
	7	Tire Type	Drive tire		Solid Rubber	Solid Rubber	7
	8		Caster wheels		Poly	Poly	8
	9		Load wheels		Vulkollan Poly	Vulkollan Poly	9
	10	Wheels	Drive/caster/load (x=driven)	number	1x / 2 / 2	1x / 2 / 2	10
FORKS	11	Fork Size	Outside spread	in (mm)	27 (685)	27 (685)	11
	12	Fork Height	Raised position	in (mm)	9.25 (235)	9.25 (235)	12
	13		Lowered position	in (mm)	3.25 (82.5)	3.25 (82.5)	13
	14	Individual Fork Width		in (mm)	9.25 (235)	9.25 (235)	14
DIMENSIONS	15	Head length	Forks raised	in (mm)	56.9 (1445)	56.9 (1445)	15
	16	Width	Chassis	in (mm)	35.1 (890)	35.1 (890)	16
	17	Tires / Wheels	Drive tire - dia. x width	in (mm)	10 x 4 (254 x 102)	10 x 4 (254 x 102)	17
	18		Caster wheels - dia. x width	in (mm)	6 x 3 (152 x 76)	6 x 3 (152 x 76)	18
	19		Load wheels - dia. x width	in (mm)	3.25 x 6 (83 x 152)	3.25 x 6 (83 x 152)	19
SPEEDS	20	Speed -Travel	No load	mph (kph)	9.0 (14.5)	9.0 (14.5)	20
	21		Full load	mph (kph)	7.2 (11.6)	6.2 (10.0)	21
	22	Speed -Lift / Lower	No load	sec.	3.0 / 4.7	3.0 / 4.7	22
	23		Full load	sec.	4.2 / 4.4	4.6 / 4.3	23
BATTERY	24	Compartment Size ¹	Length x Width x Height	in (mm)	33.3 x 13.5 x 31.6 (850 x 345 x 805)		24
	25	Amp Hr Capacity	Max (6-hr)	Ah	840	840	25
	26	Weight	Min / Max	lb (kg)	855 / 1550 (390 / 700)	855 / 1550 (390 / 700)	26
	27	Lead Length	Position "B"	in (mm)	20 (508)	20 (508)	27
	28	Connector		type	SB-175 Red	SB-175 Red	28
	29	Battery Roller (Option)	Height from floor (forks lowered)	in (mm)	7.05 (180)	7.05 (180)	29

¹Battery compartment size with optional rollers & side gates - 30.9 x 13.5 x 31.6 (785 x 345 x 805)

Aisle Specifications

				Single Pallet	Double Pallet			
SPX Center-Control, Walkie/Rider Pallet								
SPECIFICATIONS	30	Fork Length	Nominal	in (mm)	48 (1220)	84 (2135)	96 (2440)	30
	31	Overall Truck Length	Forks raised	in (mm)	104.9 (2665)	140.9 (3580)	152.9 (3885)	31
	32	Face of Forks to Center of Load Wheel	Forks raised	in (mm)	36.4 (925)	57.6 (1465)	57.6 (1465)	32
	33		Forks lowered	in (mm)	40.3 (1025)	61.3 (1560)	61.3 (1560)	33
	34	Center of Load Wheel to Tip of Forks	Forks raised	in (mm)	11.4 (290)	26.4 (670)	38.4 (975)	34
	35		Forks lowered	in (mm)	7.7 (195)	22.7 (575)	34.7 (880)	35
	36	Wheelbase	Forks raised	in (mm)	85.3 (2165)	106.2 (2700)	106.2 (2700)	36
	37		Forks lowered	in (mm)	89.0 (2260)	109.9 (2795)	109.9 (2795)	37
	38	Grade Clearance	Between caster & load wheels	%	57	40	40	38
	39		From load wheel to fork tip	%	70	30	20	39
	40	Turning Radius		in (mm)	93.5 (2375)	114.5 (2910)	114.5 (2910)	40
	41		Including handle (at 90°)	in (mm)	98.7 (2510)	119.7 (3040)	119.7 (3040)	41
	42	Right Angle Stacking Aisle ¹	40", 42" or 48" load width	in (mm)	108 (2745)	146 (3710)	158 (4015)	42
	43	90° Equal Intersecting Aisle ¹	40" Load Width	in (mm)	78 (1980)	89 (2260)	91 (2315)	43
	44		42" Load Width	in (mm)	79 (2010)	91 (2315)	92 (2340)	44
	45		48" Load Width	in (mm)	82 (2085)	94 (2390)	95 (2415)	45
46	Truck Weight	No load, without battery	lbs (kg)	1750 (795)	1895 (860)	1930 (880)	46	

¹ Add 6-8 for ease of operation. Includes 1" clearance on each side of load.

Platinum SPX^{series}

Technical Information

Standard Equipment

1. 24-volt electrical system
2. Brushless AC drive motor and controller system
3. Multi-function digital display includes battery discharge indicator with lift lockout, (3) hour meters, and fault-code display
4. Digital CAN-bus communications
5. Programmable performance parameters, including speed settings up to 9.0 mph
6. Adjustable steer head with butterfly speed control
7. Low effort lift, lower, and horn buttons
8. Coast control with integrated sidetracker
9. Large operator platform with anti-fatigue cushioned mat
10. Padded front wall and backrest
11. Electronic horn
12. On/off key switch
13. Heavy-duty steel hood and large front bumper
14. Tapered fork tips with pallet entry/exit slides
15. Load backrest - 50" high
16. Vulkollan poly load wheels with string guards
17. Rubber drive tire with string guard
18. Heavy-duty, poly caster wheels with string guards
19. Regenerative braking
20. Spring applied/electronically released brake system with push button parking brake
21. Sealed switches and controller for for wet, cooler and freezer applications
22. Motor and controller thermal protection
23. Hydraulic overload protection valve
24. Powder-coat paint finish

Optional Equipment

1. Multi-function LCD display with:
 - PIN access
 - Selectable performance modes
 - BDI and speedometer
 - On-board diagnostics and troubleshooting
2. Fixed steer head
3. Magnetic mount convenience tray with stretch wrap holder
4. Load backrest - 60" high
5. Battery compartment rollers with side gates
6. Battery gate interlock
7. Non-marking rubber, or flat poly drive tire options
8. Stainless steel axles and linkage pins
9. Travel alarm
10. Toggle switch
11. Fork auto-lift function

Ergonomics & Operator Comfort

T-style, adjustable steer head combined with cushioned platform and fully padded compartment provide an impressive workplace to achieve maximum operator comfort and reduced fatigue resulting in sustained productivity. The steer head's wide, 190° steering arc allows for precise maneuvering in tight spaces with minimal effort. Its ergonomic layout of soft touch switches includes two large thumb-actuated butterfly speed controls for simple operation. Raise, lower and fixed speed reverse buttons offer more efficient load handling.

Separate controls mounted to a soft grip grab bar facilitate reverse operation, including lift and lower, horn and fixed reverse travel speed. Roomy, low profile compartment (8.8" platform height) permits easy entry/exit and walk-through. A cushioned platform mat provides added comfort.

The truck's standard coast control offers increased efficiency by allowing the truck to coast for more efficient order picking. Actuated by switches conveniently located on either side of the control head, the sidetracker feature allows the operator to walk beside the truck while performing low-level order picking, for greater efficiency and productivity.

Efficient Performance

Heavy-duty 5.2Hp, brushless, three-phase AC drive motor provides high power and torque to handle high productivity operations, with peak performance throughout the battery range. Longer run times per battery charge are achieved by using less energy per cycle.

For enhanced efficiency, its advanced motor controller/AC inverter electronically distributes power as needed, to the AC drive motor, or DC pump motor. This system offers programmable regenerative neutral braking and proportional plugging. Its AC design eliminates forward and reverse contactors, and features electronic travel speed control for precise, efficient performance.

Optional Multi-Function LCD Display

An optional multi-function LCD display offers PIN codes to restrict truck access, selectable performance modes for customized productivity, and a battery discharge indicator with graphic representation of remaining battery charge. Plus, with its on-board

diagnostics, troubleshooting, and adjustment, a service tech can make adjustments and perform maintenance without the need for a separate handset tool.

Smart Electric Brake

Electrical braking system utilizes regenerative motor torque prior to disc brake actuation, for less component wear and longer life. The spring applied/electronically released disc brake system eliminates needed adjustments, for reduced maintenance. The service/park brake can be activated by pressing either brake button on the steer head.

Frame Assembly

Exclusive articulated frame design with 5-point suspension incorporates drive wheel and swivel caster wheels that are separate from the rear load bearing frame, permitting smooth, independent movement of rear frame and chassis for easier negotiating over dockplates and uneven floors.

Fork Assembly

Forks are 9¼" wide and constructed from ¼" plate steel, designed with a reinforced tip for extra durability. Various lengths available for both double and single pallet fork options. All come with standard 27" wide fork spread.

Proven, push-type lift linkage design uses rugged 1½" x 1½" solid steel tie rods to absorb high impact shocks caused by dock boards and dock plates. Push type design achieves full 6" of lift while preventing the tie rods from extending beyond the fork plane and the push type design reduces maintenance since no adjustments are needed.

Alloy steel fork slides facilitate pallet entry and exit eliminating the need for entry rollers or discs. Tie rods are positively aligned and pinned to eliminate the need for field adjustments. Full-length, angle iron reinforcements enhance torsion strength for increased durability and longer life.

Optional Auto-Lift

Release the lower button with the forks lowered and the forks automatically lift 2½", to prevent the forks from dragging across uneven floors.

Wheels

6" wide Vulkollan poly load wheels with dual bearings offer increased floor surface contact and string guards help prevent debris from getting into axles and bearings.

Caster Design

Heavy-duty, shim-free casters, mounted under the rider platform, provide a 2" up/down travel stroke for maximum stability in rough floor conditions. Threaded fastener design means quick adjustments are easily made.

Hydraulics

Heavy-duty, integrated DC motor, lift pump, and fluid reservoir features an overload valve to protect hydraulic components, and includes a check valve and flow regulator. No lift limit switch needed since the controller cuts out pump.

Drive Unit Assembly

Vertically-mounted balanced drive system with drive motor, transmission and drive tire reduces steer effort and prevents unbalanced torque conditions. Quiet, spiral beveled gear drive system with sealed ball bearings, provides solid performance with low steer effort. Five-nut removal of the drive tire simplifies replacement when needed.

Ease of Maintenance

Brushless AC drive motor uses fewer components and requires less maintenance for lower operating costs. Easily accessible, rotation sensing encoder is externally mounted on the drive motor for simplified replacement. Motor and controller feature thermal protection system to slow or shut down truck in response to high temperatures.

Digital CAN communication between the controller and control handle reduces the number of wires in the control handle harness, for reduced maintenance. Hall Effect speed and acceleration control sensor simplifies maintenance and limits downtime due to its non-contact design, with no mechanical wiping action, potentiometers, or heaters. On-board diagnostics simplifies maintenance.

One-piece cover removal makes access to the drive unit, and major components quick and easy. All lubrication fittings are easily accessible with the truck upright and the battery in place.

Environmental

This truck is ideal for applications that work in multiple environments. All components are designed to withstand wet, cold and/or freezer applications to -20° F (-28.9° C). The main controller features an ingress protection rating of IP65 against dust and moisture intrusion.



Nissan Forklift Corporation reserves the right to make product changes relating to colors, equipment, specifications or available options without notice. For more information, contact your Nissan Forklift representative.

NISSAN FORKLIFT

NISSAN
FORKLIFT

Platinum WPX Series

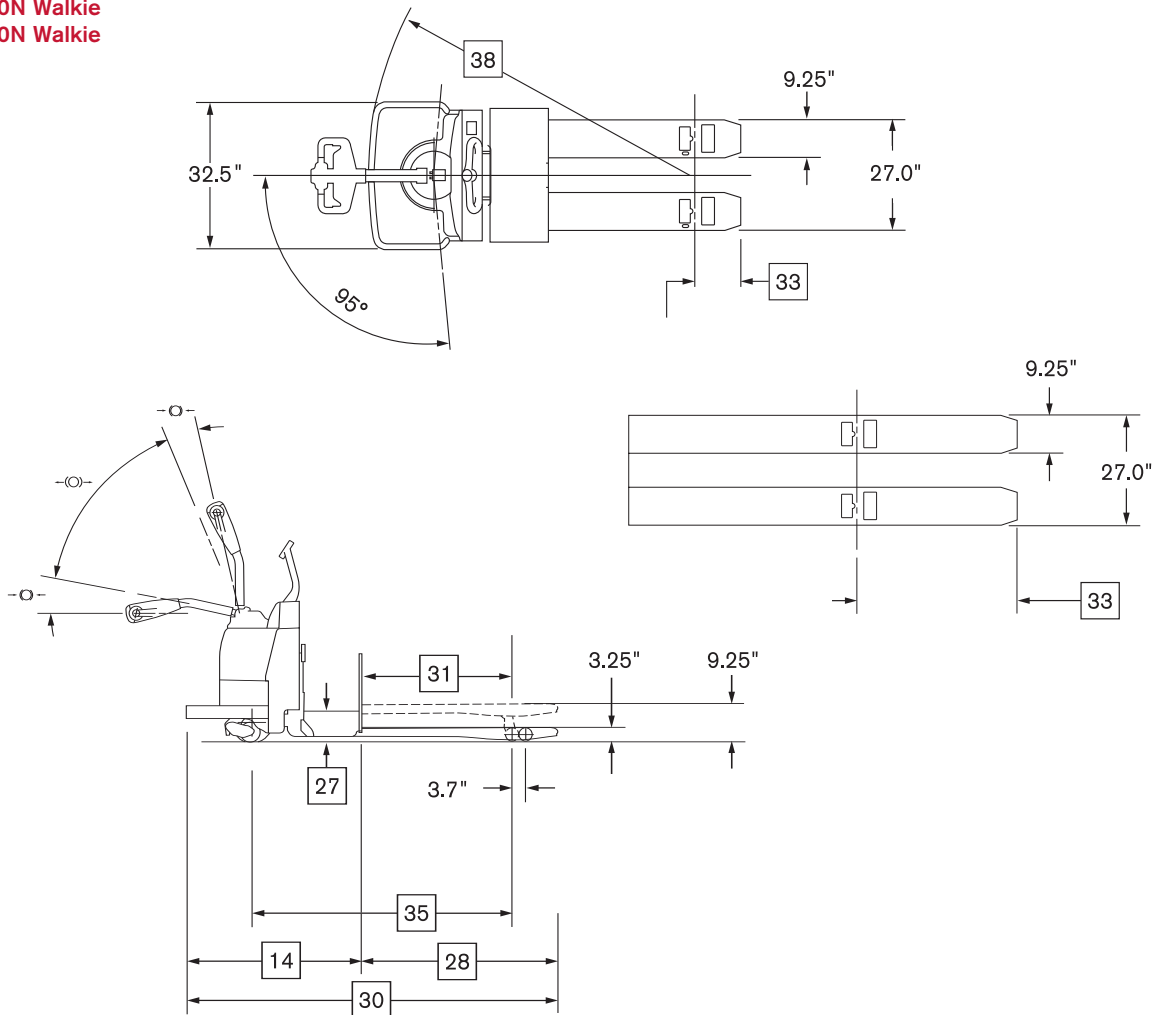
Walkie Pallet Truck / AC-Powered Models

6,000 & 8,000 lb.
Capacities

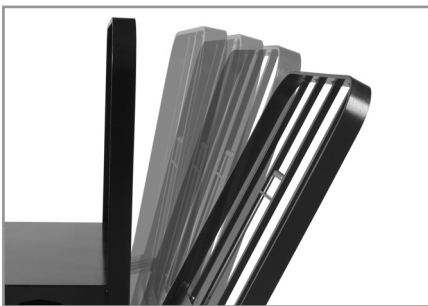


Dimensions

WPX60N Walkie
WPX80N Walkie



Options



Load backrests have slip-on or tilt-down designs available to facilitate battery change out. Tilt down includes Nissan's EZ release feature.



Optional multi-function LCD digital display includes PIN codes to restrict truck access, selectable performance modes, battery discharge indicator and speedometer. It also offers on-board diagnostics, troubleshooting and adjustment.



Battery roller design provides easier battery change out. Includes removable side gates.

6,000 & 8,000 lb. capacity

Main Truck Specifications

	CHARACTERISTICS						
	1	Manufacturer's Name			Nissan	Nissan	1
2	Model	Model designation		WPX60N	WPX80N	2	
		Long Model Code		WPXT2W1G60NV	WPXT2W1G80NV	3	
3							
4	Load Capacity	Rated capacity	lb (kg)	6000 (2720)	8000 (3630)	4	
5	Power Type	Electric		24 Volt	24 Volt	5	
6	Operator Type			Walkie	Walkie	6	
7	Tire Type	Drive tire		Solid Rubber	Solid Rubber	7	
8		Load wheels		Vulkollan Poly	Vulkollan Poly	8	
9	Wheels	Drive/load (x=driven)	number	1x / 2	1x / 2	9	
10	Fork Size	Outside spread	in (mm)	27 (685)	27 (685)	10	
		Raised position	in (mm)	9.25 (235)	9.25 (235)	11	
		Lowered position	in (mm)	3.25 (82.5)	3.25 (82.5)	12	
13	Individual Fork Width		in (mm)	9.25 (235)	9.25 (235)	13	
14	Overall Dimensions	Head length	in (mm)	34.7 (880)	34.7 (880)	14	
		Chassis	in (mm)	32.5 (825)	32.5 (825)	15	
		Drive tire - dia. x width	in (mm)	10 x 5 (254 x 127)	10 x 5 (254 x 127)	16	
		Load wheels - dia. x width	in (mm)	3.25 x 6 (83 x 152)	3.25 x 6 (83 x 152)	17	
18	Speeds	Speed - Travel	No load	mph (kph)	3.7 (5.9)	3.7 (5.9)	18
		Full load	mph (kph)	3.7 (5.9)	3.7 (5.9)	19	
		Speed - Lift / Lower	No load	sec.	3.6 / 5.1	3.6 / 5.1	20
		Full load	sec.	5.1 / 4.8	6.1 / 4.7	21	
22	BATTERY	Compartment Size ¹	Length x Width x Height	in (mm)	31.9 x 13.25 x 32 (810 x 335 x 815)	22	
		Amp Hr Capacity	Max (6-hr)	Ah	750	750	23
		Weight	Min / Max	lb (kg)	800 / 1500 (365 / 680)	800 / 1500 (365 / 680)	24
		Lead Length	Position "B"	in (mm)	20 (508)	20 (508)	25
		Connector		type	SB-175 Red	SB-175 Red	26
		Battery Roller (Option)	Height from floor (forks lowered)	in (mm)	7.9 (200)	7.9 (200)	27

¹ Battery compartment size with adjustable retainers - 30.9 x 13.25 x 32 (785 x 335 x 815); w/optional rollers & side gates - 31.1 x 13.25 x 32 (790 x 335 x 815)

Specifications

	WPX Walkie/Rider	Single Pallet						Double Pallet		
		Nominal	in	36	42	48	84	96		
28	Fork Length	Nominal	in	36	42	48	84	96	28	
		Actual	in (mm)	35.7 (910)	41.7 (1060)	47.7 (1210)	59.7 (1515)	95.7 (2430)	29	
	30	Overall Truck Length		in (mm)	70.4 (1790)	76.4 (1940)	82.4 (2095)	94.4 (2400)	130.4 (3315)	30
	31	Face of Forks to Center	Forks raised	in (mm)	24.4 (620)	30.4 (770)	36.4 (925)	48.4 (1230)	56.5 (1435)	31
	32	of Load Wheel	Forks lowered	in (mm)	28.0 (710)	34.0 (865)	40.0 (1015)	52.0 (1320)	60.1 (1525)	32
	33	Center of Load Wheel	Forks raised	in (mm)	11.3 (290)	11.3 (290)	11.3 (290)	11.3 (290)	39.2 (995)	33
	34	to Tip of Forks	Forks lowered	in (mm)	7.7 (195)	7.7 (195)	7.7 (195)	7.7 (195)	35.6 (905)	34
	35	Wheelbase	Forks raised	in (mm)	51.6 (1310)	57.6 (1465)	63.6 (1615)	75.6 (1920)	83.5 (2120)	35
			Forks lowered	in (mm)	55.2 (1405)	61.2 (1555)	67.2 (1710)	79.2 (2015)	87.1 (2215)	36
	37	Grade Clearance	Forks raised w/pallet	%	36.4	32.5	29.4	24.8	22.4	37
	38	Turning Radius		in (mm)	59.6 (1515)	65.5 (1665)	71.5 (1820)	83.5 (2125)	91.4 (2325)	38
	39	Right Angle Stacking Aisle ¹	40", 42", 48" Load Width	in (mm)	69.0 (1755)	75.0 (1905)	81.0 (2060)	93.0 (2365)	131.0 (3325)	39
	40	90° Equal Intersecting Aisle ¹	40" Load Width	in (mm)	57.5 (1460)	60.6 (1540)	63.8 (1620)	70.1 (1780)	76.8 (1950)	40
			42" Load Width	in (mm)	58.6 (1490)	61.7 (1570)	64.9 (1650)	71.2 (1810)	77.9 (1980)	41
48" Load Width			in (mm)	61.9 (1575)	65.0 (1655)	68.2 (1735)	74.5 (1895)	81.2 (2065)	42	
43	Truck Weight	No load, without battery	lbs (kg)	985 (450)	1015 (460)	1040 (475)	1095 (495)	1215 (550)	43	

¹ Add 6-8" for ease of operation. Includes 1" clearance on each side of load.

Platinum WPX^{series}

Technical Information

Standard Equipment

- 24-volt electrical system
- Brushless AC drive motor and controller system
- Multi-function digital display includes battery discharge indicator with lift lockout, (3) hour meters, and fault-code display
- Digital CAN-bus communications
- Programmable performance parameters
- Ergonomic control handle with butterfly speed control
- Fingertip control of lift, lower, and horn buttons
- Electric horn
- On/off key switch
- Tapered fork tips with pallet entry/exit slides
- Steel side stabilizers
- Adjustable battery retainers
- SB-175 red battery connector
- Vulkollan poly load wheels with string guards
- Rubber drive tire with string guard
- Regenerative braking
- Spring applied/electronically released brake system
- Sealed switches and controller
- Motor and controller thermal protection
- Hydraulic overload protection valve
- Powder-coat paint finish

Optional Equipment

- Multi-function LCD display with:
 - PIN access
 - Selectable performance modes
 - BDI and speedometer
 - On-board diagnostics and troubleshooting
- Magnetic mount convenience tray with stretch wrap holder
- Tilt-down load backrest with EZ release (48" or 60" extension)
- Slip on/off load backrest (48" or 60" extension)
- Battery compartment rollers with side gates
- Battery gate interlock
- Travel alarm
- Toggle switch
- Fork auto-lift function
- Non-marking rubber, traction treaded rubber or flat poly drive tire options
- Special paint colors

Ergonomics & Operator Comfort

A wide, 190° steering arc and large, sealed, ball-bearing steering mechanism allows exceptional turning with minimal effort. Spring-loaded handle and roomy steering control head promote effortless movement into the operating range. The control handle features tubular steel construction and the control head is constructed from a fiberglass-filled polymer composite, with internal steel reinforcements, for higher strength and increased durability.

Thumb or fingertip-actuated butterfly speed controls on either side provide easy and precise operation. Ergonomic, fingertip layout of the soft-touch lift, lower and horn buttons delivers comfortable operation.

Large switch on the end of the control head changes the truck's travel direction if operator contact is inadvertently made.

Efficient Performance

Heavy-duty 5.2Hp, brushless, three-phase AC drive motor provides high power and torque to handle high productivity operations, with peak performance throughout the battery range. Longer run times per battery charge are achieved by using less energy per cycle.

Its advanced motor controller/AC inverter electronically distributes power, as needed, to the AC drive motor, or DC pump motor, for enhanced efficiency. This system offers programmable regenerative neutral braking and proportional plugging. The AC design eliminates forward and reverse contactors, and uses electronic travel speed control for precise, efficient performance.

Optional Multi-Function LCD Display

An optional multi-function LCD display offers PIN codes to restrict truck access, selectable performance modes for customized productivity, and a battery discharge indicator with graphic representation of remaining battery charge. Plus, with its onboard diagnostics, troubleshooting, and maintenance adjustment capabilities, a service technician can make adjustments and perform maintenance without the need for a separate handset tool.

Smart Electric Brake

Electrical braking system utilizes regenerative motor torque prior to disc brake actuation, for less component wear and longer life. The spring-applied/electronically released disc brake system eliminates needed adjustments, resulting in reduced maintenance and lower operating costs. Brake actuation occurs when the handle is in the upper and lower braking range.

Fork Assembly

Forks are 9¼" wide and constructed from ¼" plate steel, and designed with a reinforced tip for extra durability. Various lengths are available for both double and single pallet fork options. All come with standard 27" wide fork spread.

Proven, push-type lift linkage design uses rugged 1½" x 1½" solid steel tie rods to absorb high impact shocks caused by dock boards and dock plates. Push type design achieves full 6" of lift while preventing the tie rods from extending beyond the fork plane. This design also reduces maintenance since no adjustments are needed.

Alloy steel fork slides facilitate pallet entry and exit eliminating the need for entry rollers or discs. Tie rods are positively aligned and pinned to eliminate the need for field adjustments. Full-length, angle iron reinforcements enhance torsion strength for increased durability and longer life.

Optional Auto-Lift

Release the lower button when the forks are lowered and the forks automatically lift 2½" to prevent them from dragging across uneven floors.

Wheels

6" wide Vulkollan poly load wheels with dual bearings offer increased floor surface contact and string guards help prevent debris from getting into axles and bearings. Load wheels swing through a small 7" arc to achieve a full 6" lift.

Hydraulics

The heavy-duty integrated lift system (including DC motor, lift pump and fluid reservoir), features an overload valve to protect hydraulic

components, and includes a check valve and flow regulator. No lift limit switch is needed since the controller cuts out pump.

Drive Unit Assembly

Quiet, spiral beveled gear drive system with sealed ball bearings, provides solid performance with low steer effort. Five-nut removal of the drive tire simplifies replacement when needed.

Ease of Maintenance

Brushless AC drive motor uses fewer components and requires less maintenance so lower operating costs are achieved. Easily accessible, rotation sensing encoder is externally mounted on the drive motor for simplified replacement. As an added safeguard the truck motor and controller feature thermal protection which slows or shuts down the truck in response to high temperatures.

Digital CAN communication between the controller and control handle reduces the number of wires in the control handle harness, for reduced maintenance. Hall Effect speed and acceleration control sensor simplifies maintenance and limits downtime due to its non-contact design with few moving parts, and with no mechanical wiping action, potentiometers, or heaters. Elimination of directional and lift contactors, combined with enhanced thermal capabilities means optimum performance and minimal downtime. On-board diagnostics simplifies maintenance.

One-piece cover with two-bolt removal makes access to the drive unit, and major components quick and easy. All lubrication fittings are easily accessible with the truck upright.

Environmental

This truck is ideal for applications with multiple environments. All components are designed to withstand wet, cold and/or freezer applications to -20° F (-28.9° C). The main controller features an ingress protection rating of IP65 against dust and moisture intrusion.



ISO 14001:2004
NISSAN GREEN PROGRAM

Nissan Forklift Corporation reserves the right to make product changes relating to colors, equipment, specifications or available options without notice. For more information, contact your Nissan Forklift representative.

NISSAN
FORKLIFT