

# Trusted Partner In Telemetry & Fleet Management

[www.kmhsystems.com](http://www.kmhsystems.com)



**Equipment & Service Solutions**

# Telemetry & Fleet Management

KMH's industry-leading telemetry and fleet management system provide an online solution to monitoring, managing and controlling forklifts and industrial vehicles. The combination of password control, pre-shift operator checklists, equipment fault codes, PM interval alerts, load weight indicators, and seat belt interlocks all provide you with added security before the equipment even moves. Optional speed control, impact sensing, KPI measurements, fleet utilization reports, and automated e-mail alerts further enhance your fleet visibility and ability to manage your mobile equipment size, age, and utilization. Rest assured knowing that KMH can customize a solution to meet your ROI requirements.



## Opportunity

In many situations, companies are faced with growing pressures for cost control in their operations. Oftentimes businesses inherit outdated practices and mobile equipment fleets from years of change typically caused by a myriad of customer demand and growth initiatives as well as budget and information constraints. Traditional silo-based change management practices oftentimes result in a drastically different fleet size and configuration than might be achieved with enterprise-wide thought, advanced planning, and practical implementation. Thankfully, innovations emerge from this necessity creating a wide array of products and services to help companies navigate the speed and dynamics of their businesses. Telemetry and Fleet Management represent one such emergence of effective response to a company's operational challenges.

## Safety:

- Operation of the lift truck by individual operator and hours
- Configurable operator authorization on each specific piece of equipment
- Ability to register operators certifications and training, and to lock out any expired operators
- Paperless, configurable OSHA-approved startup/inspection checklists
  - Configurable email alerts for inspection failures and/or the ability to "lock out" the equipment for specific failures
  - Checklists are stored online and can be accessed anytime
- If vehicle is equipped with a seat belt sensor, the ability to require a fastened seat belt in order to operate
- If vehicle is equipped with a speed sensor, the ability to configure maximum speeds by zones, each specific piece of equipment and/or operator
- Two levels of impact detection, configurable by g-force readings
  - Lower level impact information is stored for reporting and tracking
  - Critical impacts will shut down and lock out the equipment until restarted by an authorized individual
  - Configurable email alerts for impacts

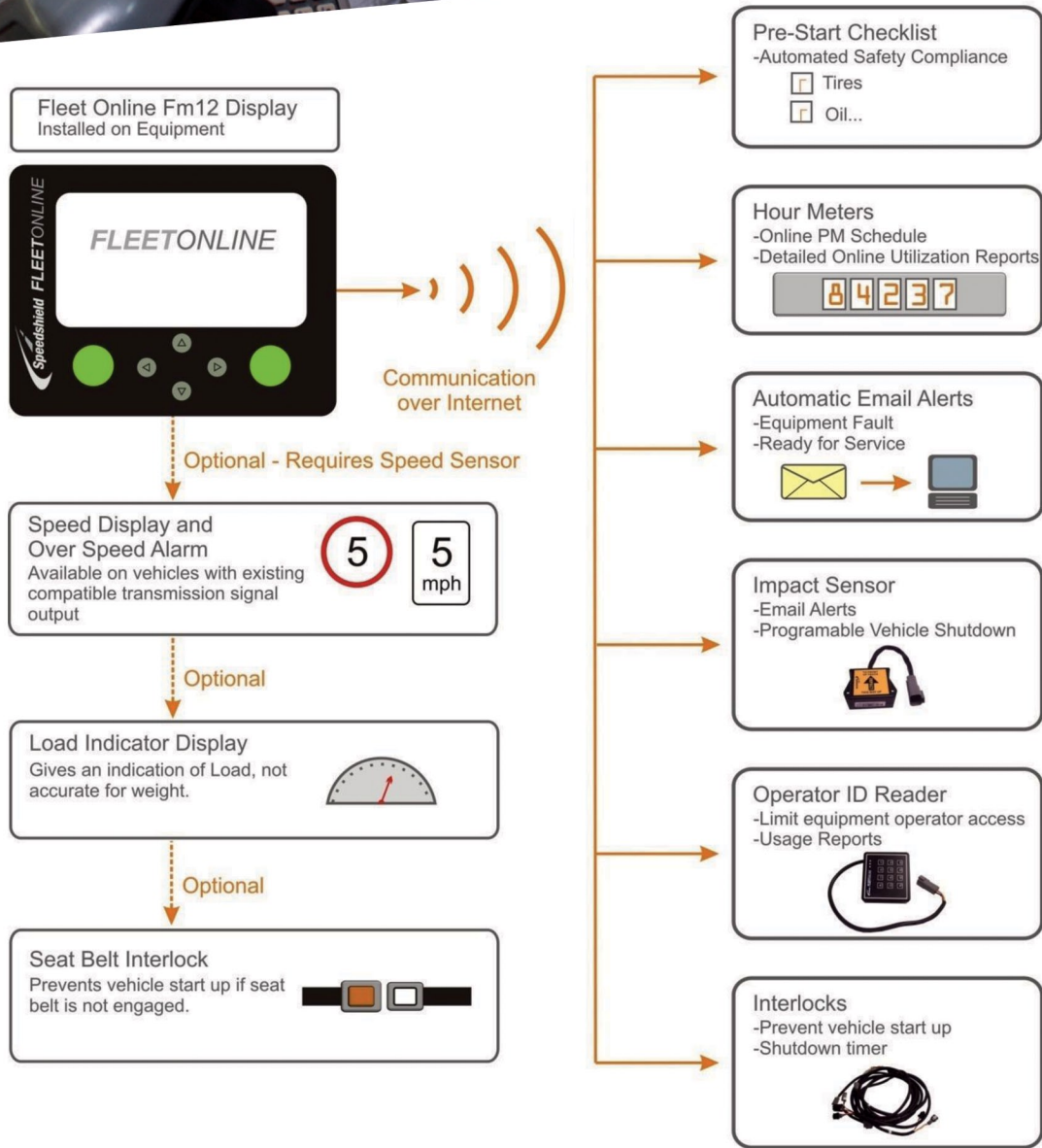
## Fiscal Responsibility:

- Excess idle engine shutoff after a configurable period of time to save fuel, reduce operating hours and emissions
- Hour meter tracking, with KPI measurements like traction hours, lift hours, idle hours by operator to allow for proper right-sizing of fleet
- Increased uptime through tracking/notification for regular maintenance with configurable email alerts

## Speedshield Implementation:

- Speedshield communicates via the cellular network and is managed through the Speedshield website
- All data is available in near real-time from any computer with internet access and a browser
- Speedshield requires no hardware or software hosting, nor any effort from your IT department

# 15% Savings in Year One. We Guarantee It.



## ROI

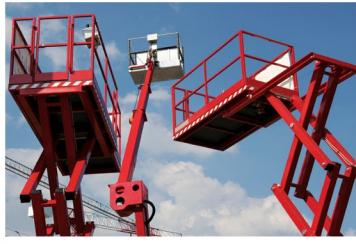
With the ability to monitor and evaluate the habits of your mobile equipment in real time through the lens of dashboard-style reports, management can make informed decisions to optimize ROI of their fleets. From reduced accidents, damage to merchandise, and labor costs to improved technology and budgeting, our comprehensive Telemetry and Fleet Management solution delivers meaningful cash flow to your financial statements. Don't hesitate to ask KMH to perform a complimentary operational audit and prepare a customized analysis for you today.



**Equipment & Service Solutions**



**Forklift Equipment**



**Industrial Equipment**



**Batteries & Chargers**



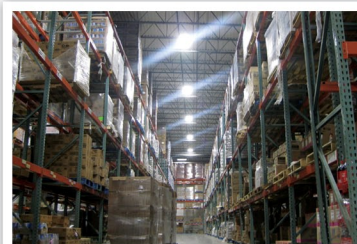
**Parts & Service Support**



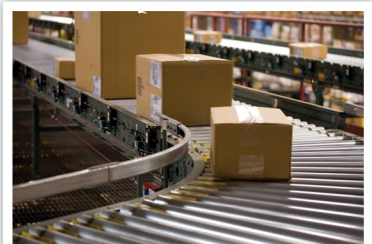
**Used / Rental / Leasing**



**Telemetry & Fleet Mgmt.**



**Energy Management**



**Integrated Systems**

**CALL (888) KMH-SYSTEMS**  
#888-564-7978

[www.kmhsystems.com](http://www.kmhsystems.com)

**Serving Industry For Over 35 Years!**

**Southwest Ohio**  
Dayton

**Central Ohio**  
Columbus

**Southern Ohio**  
Cincinnati

**Northwest Ohio**  
Toledo

**Central Kentucky**  
Lexington

**Western Michigan**  
Grand Rapids

**Greater Chicago**  
Elk Grove Village

**Northern Indiana**  
South Bend

**Central Indiana**  
Logansport

**Northeast Indiana**  
Fort Wayne

**Northwest Indiana**  
Scherrerville

**Middle Tennessee**  
Nashville

**Northern Tennessee**  
Goodlettsville

**Eastern Tennessee**  
Cookeville

