



**WE HAVE
THE TECHS
IF YOU HAVE
THE TRUCKS**

KMH is the *LEADING PROVIDER* of forklift service & parts in your market!



Responsive service dispatch and 24/7 support

Factory trained technicians across leading lift truck brands including; Nissan, TCM, Clark, Crown, Yale, Hyster, Raymond, Doosan to name a few

1st time service resolution rates greater than 90%

Painless service experience from initial quote through invoicing process!

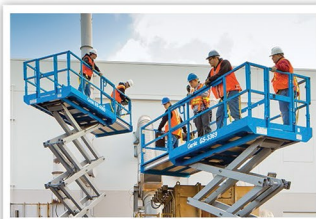
Experience The KMH Service Difference

1st Time Service Customers Will Receive Either:

**\$50 OFF First Service Repair of \$100 or More
\$25 OFF First Preventative Maintenance (PM) Job**



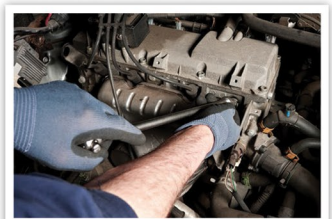
Forklift Equipment



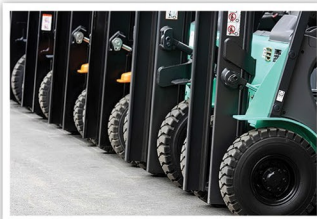
Industrial Equipment



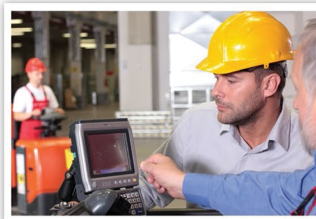
Batteries & Chargers



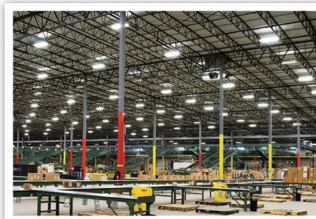
Parts & Service Support



Used / Rental / Leasing



Telemetry & Fleet Mgmt.



Energy Efficient Lighting



Integrated Systems

888-KMH-SYSTEMS www.kmhsystems.com

Full Service Operations Throughout Ohio | Indiana | Illinois | Michigan | Tennessee | Georgia | Kentucky



KMH
EQUIPMENT & SERVICES
WWW.KMHSYSTEMS.COM

Planned Maintenance Program

KMH Systems offers a comprehensive Planned Maintenance Program that will assist your company in managing your material handling costs. It does not matter whether your company has one forklift or one hundred, we can design a program to maximize your equipment's performance, safety and reliability. Our comprehensive program provides the following services during each visit:

- ✓ **Computerized scheduling at desired intervals**
- ✓ **Professional operational check**
- ✓ **Thorough lubrication & inspection of wear points**
- ✓ **Blow off of forklift with air, including radiator core**
- ✓ **Check systems diagnostics (when applicable)**
- ✓ **Adjust solid state controllers (when applicable)**
- ✓ **Inspect indicators and gauges**
- ✓ **Inspect and adjust required fluid levels**
- ✓ **Inspect battery, cables and connectors**
- ✓ **Inspect operation of brake system and check for leaks**
- ✓ **Inspect hydraulic system, hoses and cylinders**
- ✓ **Inspect and adjust mechanical steering system**
- ✓ **Inspect tires and wheels for damage or wear**
- ✓ **Inspect and adjust electrical system, contactors, control wiring, power cables and connections**
- ✓ **Inspect drive, lift and steering motor brushes (when applicable)**
- ✓ **Check hour meter operation and record readings for utilization tracking**
- ✓ **Comprehensive Planned Maintenance Report with recommendation/comments**

The scheduled interval between planned maintenance visits can be tailored to the customers' usage of the lift trucks...from every 30 days to once every 6 months or longer. We will perform the services during normal business hours (Monday thru Friday). Any additional required service work will be completed **only after** our customer's authorization has been given & additional work will be billed at the quoted labor rate.

In addition to providing forklift services for all makes & models, KMH Systems conducts planned maintenance programs for dock equipment, conveyors, hoists and batteries & chargers. Program pricing is available upon request.