

Trusted Partner In Crane Technology & Ergonomic Lifting

www.kmhsystems.com



Equipment & Service Solutions

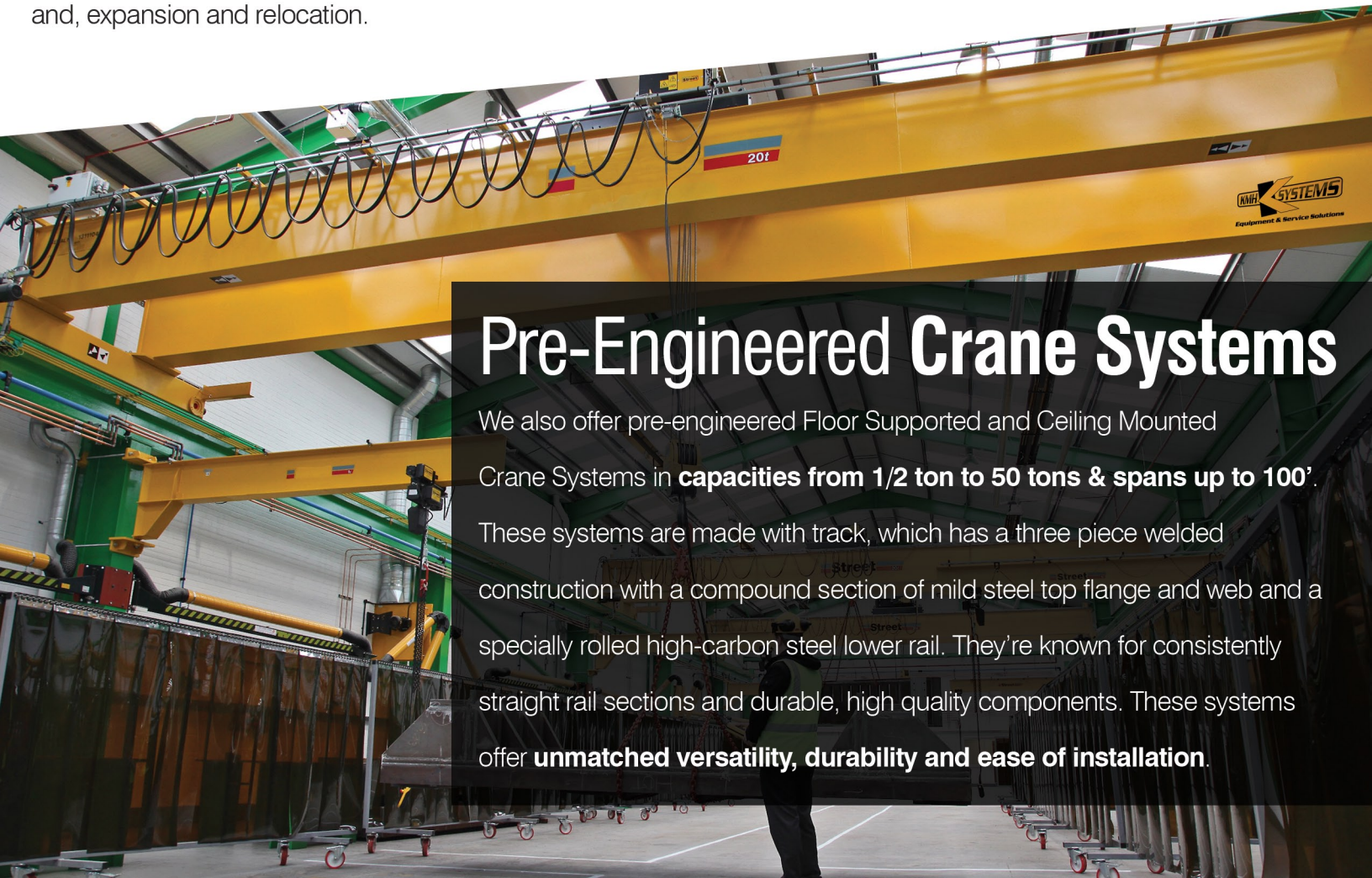


Free Standing & Ceiling Mounted Work Station Bridge Cranes

Free Standing Work Station Bridge Cranes can handle the toughest overhead lifting tasks. These cranes, which can be installed on any normal 6-inch reinforced concrete floor, feature a pre-engineered modular design that can easily expand as your work centers expand.

When a work area must be free from any support structures that may interfere with operations, Ceiling Mounted Bridge Cranes are an excellent solution to keeping floors clear. These systems are designed for easy installation and, expansion and relocation.

- Capacities from 250 to 4000 lbs.
- Bridge lengths from 4 ft. to 34 ft.
- Completely free standing, no sway bracing
- Superior load positioning
- Ease of installation & movement
- Multiple bridges can be installed on one runway system to increase productivity and flexibility in a work area



Pre-Engineered Crane Systems

We also offer pre-engineered Floor Supported and Ceiling Mounted Crane Systems in **capacities from 1/2 ton to 50 tons & spans up to 100'**. These systems are made with track, which has a three piece welded construction with a compound section of mild steel top flange and web and a specially rolled high-carbon steel lower rail. They're known for consistently straight rail sections and durable, high quality components. These systems offer **unmatched versatility, durability and ease of installation.**

Work Station Jib Cranes

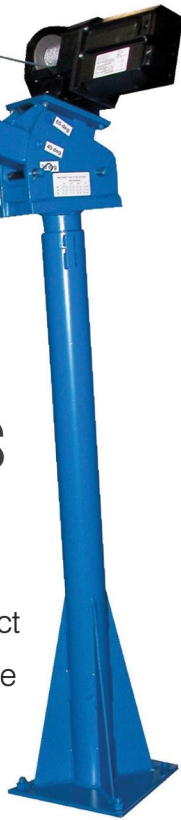
Work Station Jib Cranes are the ideal substitute for traditional, heavy I-Beam jib cranes. These jibs are designed to service circular areas and support tool balancers, air balancers, vacuum lifters and hoists. When column or wall mounted, they can handle up to a 200° rotation. When floor mounted, they can accommodate up to a 360° rotation.

Capacities available from 100 lbs. to 1000 lbs., spans to 16'.



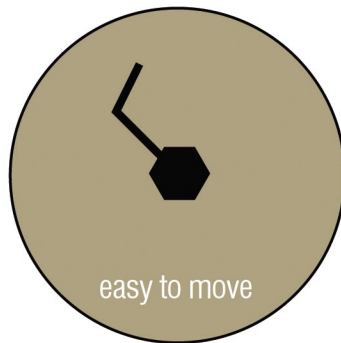
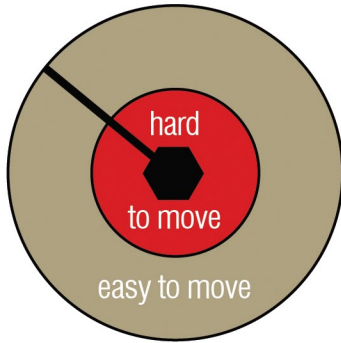
Articulating Jib Cranes

This versatile crane can move loads around corners, reach into machines or doorways, and swing under obstructions. This crane is also perfect in applications that require an operator to rotate the jib in close to its pivot point. **Capacities from 150 lbs. to 2000 lbs. with spans up to 16 ft.** Available in free standing, ceiling and wall mounted.



Jib Crane

Articulating Jib



Fold Away & Swing Arm Systems

- **Fold Away systems can be deployed as needed, then folded away when done**
- **Swing Arm systems provide circular or semicircular fall protection**
- **Available in Wall Mounted, Column Mounted or Free Standing designs**
- **Arm spans available up to 20' on Fold Away and 30' on Swing Arm systems**
- **Designed for multiple workers up to 310 lbs. each**

Operational Audit

Most of our engagements begin with an Operational Audit, which allows us to better understand your business while giving you the benefit of our knowledge of industry best practices, uncovered through years of experience by the KMH team. Through our Operational Audit, KMH studies your company culture, product data / throughput, facility layout, operational processes, and customer-driven requirements. We work alongside your key personnel and deliver meaningful recommendations that will provide a measurable ROI when implemented.

FREE
OPERATIONAL AUDIT

KMH SYSTEMS
Equipment & Service Solutions

Coupon Code:
"OP1301"

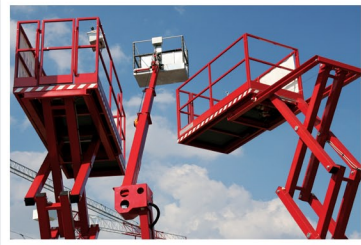
*Abnormal travel may result in potential charges



Equipment & Service Solutions



Forklift Equipment



Industrial Equipment



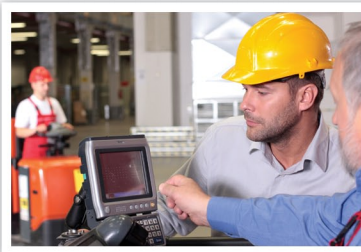
Batteries & Chargers



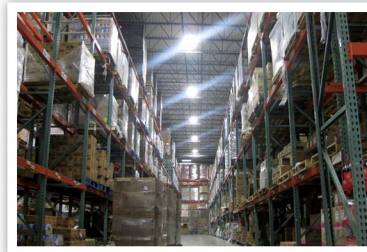
Parts & Service Support



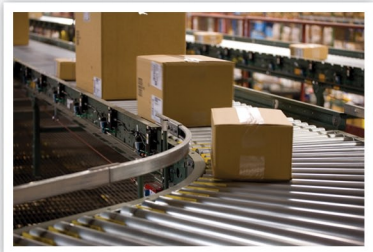
Used / Rental / Leasing



Telemetry & Fleet Mgmt.



Energy Management



Integrated Systems

CALL (888) KMH-SYSTEMS
#888-564-7978

www.kmhsystems.com

Serving Industry For Over 35 Years!

Southwest Ohio
Dayton

Central Ohio
Columbus

Southern Ohio
Cincinnati

Northwest Ohio
Toledo

Central Kentucky
Lexington

Western Michigan
Grand Rapids

Greater Chicago
Elgin

Northern Indiana
South Bend

Central Indiana
Logansport

Northeast Indiana
Fort Wayne

Northwest Indiana
Schererville

Middle Tennessee
Nashville

Northern Georgia
Atlanta

Eastern Tennessee
Cookeville

