



# Operator Training

*KMH continually strives to educate our customers about lift truck operation, safety and industrial regulations for both ANSI and OSHA. Training is conducted at ANY KMH Branch or at your location.*

Our Forklift Operator Training Course is designed to fulfill OSHA's requirement that "only trained and authorized operators shall be permitted to operate powered industrial trucks." This training course averages six hours and will utilize video segments, lecture, group discussion, facility walkthrough and demonstrations. Participants will learn the safest operating and maintenance techniques to reduce costly accidents and avoid citations.

## Content of Courses:

- **Accident Prevention**
- **Lift Truck Driving Skills**
- **Fueling, Charging & Inspecting**
- **Load Handling**
- **Pedestrian & Dock Hazards**

Focus your time on the core responsibilities most important to your valued customers.



*OSHA has promulgated the Final Rule for Powered Industrial Truck Operator Training [29 CFR 1910.178(l)], which became effective March 1, 1999. The standard requires operator training and licensing as well as periodic evaluations of operator performance. The standard also addresses specific training requirements for truck operation, loading, seat belts, overhead protective structures, alarms, and maintenance of industrial trucks. Refresher training is required if the operator is observed operating the truck in an unsafe manner, is involved in an accident or near miss, or is assigned a different type of truck.*

*OSHA estimates that tens of thousands of employees are injured or killed annually due to forklift accidents. In 1999, because of serious concerns about forklift accidents, injuries and deaths, OSHA updated its regulation regarding Powered Industrial Trucks.*



## **Equipment & Service Solutions**

*The KMH Operator Safety & Training Team is ready to assist your company. Visit our website to schedule your operator training course today, or contact your local KMH Representative. Please see reverse side for branch contact information.*

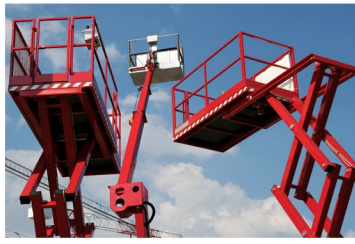
[www.kmhsystems.com](http://www.kmhsystems.com)



**Equipment & Service Solutions**



**Forklift Equipment**



**Industrial Equipment**



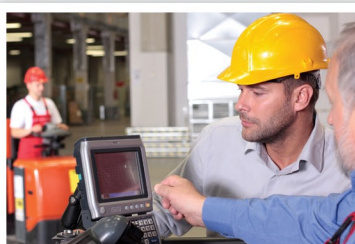
**Batteries & Chargers**



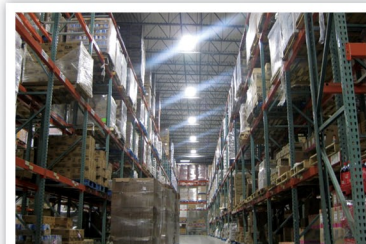
**Parts & Service Support**



**Used / Rental / Leasing**



**Telemetry & Fleet Mgmt.**



**Energy Management**



**Integrated Systems**

**CALL (888) KMH-SYSTEMS**  
#888-564-7978

[www.kmhsystems.com](http://www.kmhsystems.com)

**Serving Industry For Over 35 Years!**

**Southwest Ohio**  
Dayton

**Central Ohio**  
Columbus

**Southern Ohio**  
Cincinnati

**Northern Indiana**  
South Bend

**Central Indiana**  
Logansport

**Northeast Indiana**  
Fort Wayne

**Northwest Indiana**  
Schererville

**Middle Tennessee**  
Nashville

**Northern Tennessee**  
Goodlettsville

**Eastern Tennessee**  
Cookeville

**Central Kentucky**  
Lexington

**Northern Georgia**  
Atlanta

**Western Michigan**  
Grand Rapids

**Greater Chicago**  
Elk Grove Village

