

Trusted Partner In Equipment & Service Solutions

www.kmhsystems.com



Equipment & Service Solutions

Moving The Needle In Material Handling Systems ROI

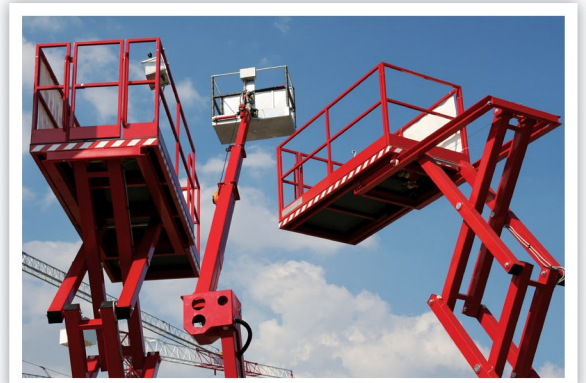


Forklift Equipment

Designed with performance, economics, and ergonomics in mind, KMH offers a full line of fork lift equipment in all seven ITA Classes. From counterbalanced cushion and pneumatic forklifts to electric sit down, narrow aisle, and pallet jack units, KMH applies the right mixture of equipment to ensure the most efficient handling of your products. Our seasoned team of application specialists carefully surveys your needs to understand your facility constraints and customer-driven goals so that we can recommend the optimal solution for driving cost out of your operation.

Industrial Equipment

Complementing our mobile fleet offerings, KMH represents a wide array of industrial equipment ranging from boom and scissor lifts to industrial sweepers, AGVs, rough-terrain and side-loading solutions. Whether you are inside or outside handling pallets, long loads, or loose items, our equipment fits the occasion. Once again, our experienced group of application specialists works closely with your team to match your unique requirements with the safest and most effective offering.



Batteries & Chargers

To support our electric equipment recommendations, KMH represents a wide range of motive power partners. Whether your application calls for traditional flooded batteries, opportunity, high-frequency or fast charging, KMH analyzes your operational data to suggest a variety of measurable ROI alternatives for your review. Our engineering group provides CAD drawings to show the location of charging stations and battery handling systems to assure proper integration with your material flow.



Parts & Service Support

With computer-generated parts schematics for all of our forklifts and over \$1 million dollars of parts' inventory in our network servicing all brands, KMH dispatches the right parts to our certified technicians ensuring maximum fleet uptime and productivity. From tires, hydraulic hoses and batteries to engines, transmissions and control boards, KMH protects your investment each and every day.



Used / Rental / Leasing

Depending on your business cycles and financial situation, KMH offers a variety of methods of mobile fleet acquisition and utilization. From certified reconditioned units, short and long term rentals to flexible financing programs; your KMH team provides just what you need when you need it. Our award-winning team takes pride in helping you meet the challenges of your dynamic operation.



www.kmhsystems.com

Serving Industry For Over 35 Years!



Telemetry & Fleet Management

KMH's industry-leading telemetry and fleet management system provide an online solution for monitoring, managing and controlling forklifts and industrial vehicles. The combination of password control, pre-shift operator checklists, fault codes, PM interval alerts, load weight indicators, and seat belt interlocks all provide you with added security before the equipment even moves. Speed control, impact sensing, KPI measurements, utilization reports, and automated e-mail alerts further enhance your ability to manage your fleet size, age, and utilization. Rest assured knowing that KMH can customize a solution to meet your ROI needs.

Energy Management

KMH delivers sustainable and guaranteed positive cash flow and energy savings through forward thinking energy management services. From energy efficient lighting and motion/ambient light sensor controls to "off the grid" direct renewable solutions such as light pipes and solar harvesting, KMH provides a modular platform that enables our clients to capitalize on current and emerging ROI opportunities. KMH integrates the design, installation, and recycling elements to ensure a turnkey solution.



Integrated Systems

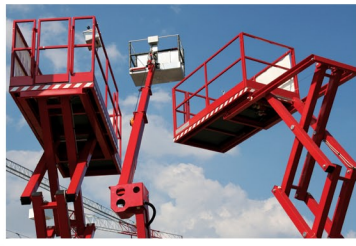
KMH provides a full complement of operational audit, engineering, controls, material handling equipment, integration, and support services to provide a turnkey system to our clients. Analyzing Key Performance Indicators, KMH focuses on improving quality while driving unnecessary cost out of your operation. Whether you need additional work space, storage, conveyance or automation, KMH uses our expertise on the available options to ensure that all of the independent pieces are pulled together in the most cohesive manner to deliver measurable project ROI.



Equipment & Service Solutions



Forklift Equipment



Industrial Equipment



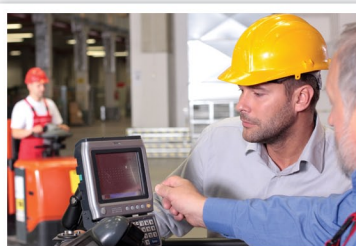
Batteries & Chargers



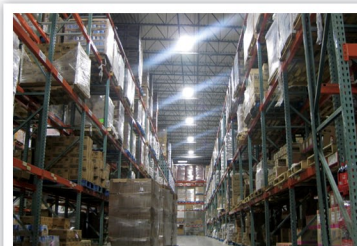
Parts & Service Support



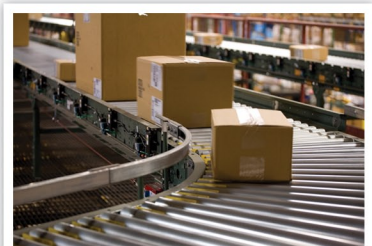
Used / Rental / Leasing



Telemetry & Fleet Mgmt.



Energy Management



Integrated Systems

CALL (888) KMH-SYSTEMS
#888-564-7978

www.kmhsystems.com

Serving Industry For Over 35 Years!

SAVE THIS COUPON FOR
10% OFF
Your First Parts, Service, Or Rental Order
Coupon Code: **ESSBR**

Southwest Ohio
Dayton

Central Ohio
Columbus

Southern Ohio
Cincinnati

Central Kentucky
Lexington

Northern Georgia
Atlanta

Western Michigan
Grand Rapids

Greater Chicago
Elk Grove Village

Northern Indiana
South Bend

Central Indiana
Logansport

Northeast Indiana
Fort Wayne

Northwest Indiana
Schererville

Middle Tennessee
Nashville

Northern Tennessee
Goodlettsville

Eastern Tennessee
Cookeville

