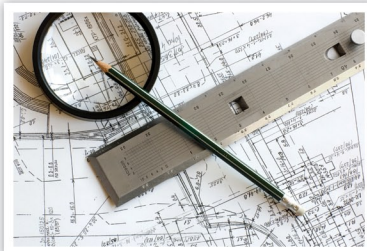




**Equipment & Service Solutions**

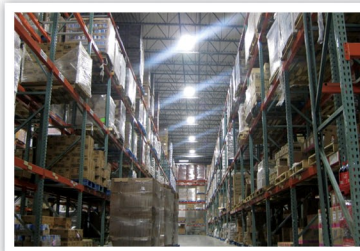
# Trusted Partner In Material Handling · Integrated Systems Construction Equipment



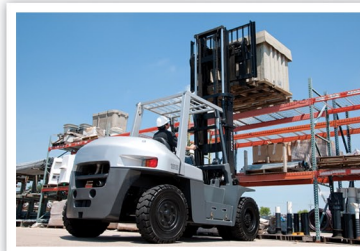
Engineering



Integrated Systems



Energy Management



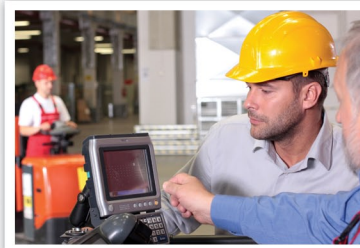
Forklift Equipment



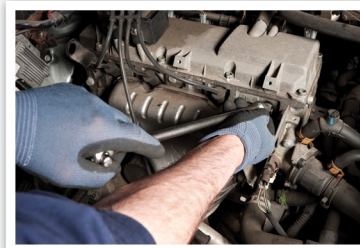
Construction Equipment



Used / Rental / Leasing



Telemetry & Fleet Mgmt.



Parts & Service



**CALL (888) KMH-SYSTEMS**  
#888-564-7978

[www.kmhsystems.com](http://www.kmhsystems.com)

## Serving Industry For Over 35 Years!

- |                                |                               |                                 |                                   |                               |                                  |                             |
|--------------------------------|-------------------------------|---------------------------------|-----------------------------------|-------------------------------|----------------------------------|-----------------------------|
| Southwest Ohio<br>Dayton       | Central Ohio<br>Columbus      | Southern Ohio<br>Cincinnati     | Northwest Ohio<br>Toledo          | Central Kentucky<br>Lexington | Western Michigan<br>Grand Rapids | Greater Chicago<br>Elgin    |
| Northern Indiana<br>South Bend | Central Indiana<br>Logansport | Northeast Indiana<br>Fort Wayne | Northwest Indiana<br>Schererville | Middle Tennessee<br>Nashville | Eastern Tennessee<br>Cookeville  | Northern Georgia<br>Atlanta |



**Equipment & Service Solutions**

[www.kmhsystems.com](http://www.kmhsystems.com)



### Moving The Needle In Material Handling ROI

Founded 1976, KMH Systems, Inc. specializes in Material Handling Solutions for a wide range of applications in manufacturing, distribution, and packaging. KMH enjoys a position of market leadership in Industrial Trucks, Construction Equipment, Integrated Systems and everything in between. KMH Systems is your winning choice for Application Analysis, Design/Equipment Recommendation, Equipment Acquisition (including rental & leasing options), Delivery & Installation, Project Mangement, and Parts & Service Support.

Whether your need is lift trucks, construction equipment, simple handling, storage, ergonomics, or complex integrated material handling systems, KMH Systems is your partner in application-specific solutions. We service what we sell, in terms of both preventative and regular maintenance. KMH offers in-house engineering and project management, to ensure successful implementation of sophisticated material handling.



### KMH, The Right Equipment For The Job!

As a leader in material handling, KMH offers so much more than the just a full-line of construction equipment, forklifts, and integrated systems... All of our equipment comes with the support of an entire company, our strategically located dealer network, service technicians and everything needed to finance and manage your assets.

With computer-generated parts schematics for equipment offerings and over \$1 million dollars of parts' inventory in our network servicing all brands, KMH dispatches the right parts to our certified technicians ensuring maximum fleet/system uptime and productivity. From tires, hydraulic hoses, batteries, engines, transmissions and control boards to conveyor belts, rollers, and PLC's KMH protects your investment each and every day.



**INTEGRATED SYSTEMS**

**CONSTRUCTION EQUIPMENT**

**MATERIAL HANDLING**

### We are dedicated to...

- Engineering the solution
- Managing the process
- Supporting the result



KMH has been honored with the Material Handling Engineering Value Added Award, selected from the list of Material Handling Equipment Distributors Association (MHEDA) members. This award is in recognition of the demonstrated ability of KMH to blend our technical skills to meet the needs of our clients. This philosophy continues to be a proven winner for us, with 80% of our business attributed to repeat customers.

As an integrator, we know it takes commitment from all parties to achieve the desired results and we thrive in this collaborative environment. Together we solve today's problems with an eye toward tomorrow's needs of efficiency, safety and profitability.

### Plenty Of Financial Options

Whether you want to purchase, rent, lease, or even include full maintenance & fleet management, KMH can find the right fit for you.

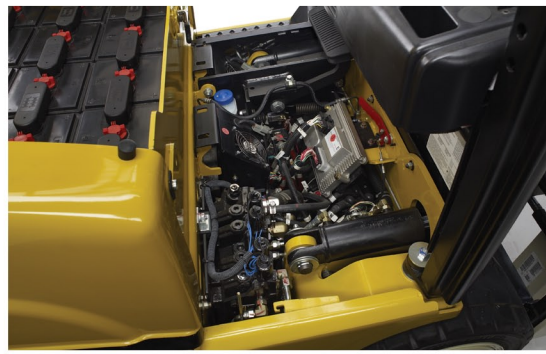
### KMH Mission Statement

To create **indispensible partnerships** with our clients by reviewing your customer-driven operational requirements and **KPIs** (such as on time delivery and quality) so that we may apply our leading material handling expertise in order to **lower your cost per unit shipped**.

We emphasize **material handling disciplines** of mobile equipment, fleet management, construction equipment, systems integration, energy management, automation, technology, safety, and support services to assure that we meaningfully **connect with your enterprise-wide goals**.

We will accomplish this under our **guiding principles** of integrity, mutuality, and fairness to our employees, vendor partners, and customers.





### Forklift Equipment

Designed with performance, economics, and ergonomics in mind, KMH offers a full line of fork lift equipment in all seven ITA Classes. From counterbalanced cushion and pneumatic forklifts to electric sit down, narrow aisle, and pallet jack units, KMH applies the right mixture of equipment to ensure the most efficient handling of your products. Our seasoned team of application specialists carefully surveys your needs to understand your facility constraints and customer-driven goals so that we can recommend the optimal solution for driving cost out of your operation.

### Industrial Equipment

Complementing our mobile fleet offerings, KMH represents a wide array of industrial equipment ranging from boom and scissor lifts to industrial sweepers, AGVs, rough-terrain and side-loading solutions. Whether you are inside or outside handling pallets, long loads, or loose items, our equipment fits the occasion. Once again, our experienced group of application specialists works closely with your team to match your unique requirements with the safest and most effective offering.

### Batteries & Chargers

To support our electric equipment recommendations, KMH represents a wide range of motive power partners. Whether your application calls for traditional flooded batteries, opportunity, high-frequency or fast charging, KMH analyzes your operational data to suggest a variety of measurable ROI alternatives for your review. Our engineering group provides CAD drawings to show the location of charging stations and battery handling systems to assure proper integration with your material flow.

### Parts & Service Support

With computer-generated parts schematics for all of our forklifts and over \$1 million dollars of parts' inventory in our network servicing all brands, KMH dispatches the right parts to our certified technicians ensuring maximum fleet uptime and productivity. From tires, hydraulic hoses and batteries to engines, transmissions and control boards, KMH protects your investment each and every day.



### Integrated Systems

KMH provides a full complement of operational audit, engineering, controls, material handling equipment, integration, and support services to provide a turnkey system to our clients. Analyzing Key Performance Indicators, KMH focuses on improving quality while driving unnecessary cost out of your operation. Whether you need additional work space, storage, conveyance or automation, KMH uses our expertise on the available options to ensure that all of the independent pieces are pulled together in the most cohesive manner to deliver measurable project ROI.

### Energy Management

KMH delivers sustainable and guaranteed positive cash flow and energy savings through forward thinking energy management services. From commercial and residential generators, energy efficient lighting and motion/ambient light sensor controls to "off the grid" direct renewable solutions such as light pipes and solar harvesting, KMH provides a modular platform that enables our clients to capitalize on current and emerging ROI opportunities. KMH integrates the design, installation, and recycling elements to ensure a turnkey solution.

### Telemetry & Fleet Management

KMH's industry-leading telemetry and fleet management system provide an online solution for monitoring, managing and controlling forklifts and industrial vehicles. The combination of password control, pre-shift operator checklists, fault codes, PM interval alerts, load weight indicators, and seat belt interlocks all provide you with added security before the equipment even moves. Speed control, impact sensing, KPI measurements, utilization reports, and automated e-mail alerts further enhance your ability to manage your fleet size, age, and utilization.

### Used / Rental / Leasing

Depending on your business cycles and financial situation, KMH offers a variety of methods of mobile fleet acquisition and utilization. From certified reconditioned units, short and long term rentals to flexible financing programs; your KMH team provides just what you need when you need it. Our award-winning team takes pride in helping you meet the challenges of your dynamic operation.

# We Service What We Sell, Rent & Lease! MATERIAL HANDLING

# WWW.KMHSYSTEMS.COM

Forklifts



Conveyor Systems



Dock Equip.



Storage Systems



Lift Tables



Boom Lifts



Batteries/Chargers



Scissor Lifts



Industrial Cleaning



AGVs



Racking



Energy Management



Equipment Rentals



Tow Tractors



Ergonomic Lifting



Vertical Lifting



Controls



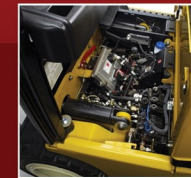
Industrial Vehicles



Hoists



Parts & Service



New/Used Equip.



Manipulators

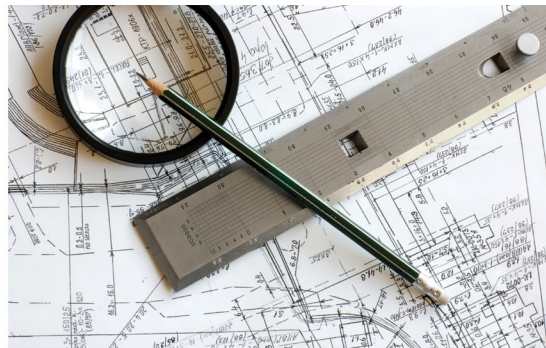


Generators



Factory Automation





### Operational Audit

Most of our engagements begin with an Operational Audit, which allows us to better understand your business while giving you the benefit of our knowledge of industry best practices, uncovered through years of experience by the KMH team. Through our Operational Audit, KMH studies your company culture, product data / throughput, facility layout, operational processes, and customer-driven requirements. We work alongside your key personnel and deliver meaningful recommendations that will provide a measurable ROI when implemented.

### Integrated Systems

The primary key to any successful and efficient operation is not what specific types of equipment and automation are in place. Far more important is that everything works together seamlessly to support your processes and customer requirements while improving quality and driving unnecessary cost out of your operation. Whether you need additional work space, storage, conveyance or automation, KMH uses our deep domain expertise and understanding of the available options to recommend appropriate solutions.

### Engineering

As we familiarize ourselves with your business, KMH offers a full complement of engineering services to organize our recommendations for your review. Through the use of value-stream mapping and Computer-Aided Design expertise, KMH translates your physical layout and processes into a dynamically engineered drawing for further meaningful discussions with your team. We deliver this in a practical format for easy understanding and/or evaluation of the future state.

### Controls & Automation

Once we agree on the design based on the value stream mapping and engineered layout, KMH's in-house Controls Team then turns our sights to the details of the nerve center which will control these independent functions. From Programmable Logic Control to PC based solutions, KMH provides a comprehensive array of controls and automation offerings.



### Warehousing Solutions

Through our comprehensive network of partners, KMH brings best in class warehouse solutions ranging from simple barcoding systems to fully functional Warehouse Management Systems, Manifesting, Yard Management, TMS and slotting. Based on our knowledge of your operation, we can recommend and implement the solutions that best fit your requirements.

### Energy Management

KMH delivers sustainable and guaranteed positive cash flow and energy savings through forward thinking energy management services. From commercial and residential generators, energy efficient lighting and motion/ambient light sensor controls to "off the grid" direct renewable solutions such as light pipes and solar harvesting, KMH provides a modular platform that enables our clients to capitalize on current and emerging ROI opportunities. KMH integrates the design, installation, and recycling elements to ensure a turnkey solution.

### Project Management

KMH plans, organizes and manages projects in a systematic manner in order to deliver key project elements in a timely way to ensure a fluid integration into our client's operation. Our on-site Project Manager communicates important milestone events and provides updated drawings and Gantt charts on a regular basis to assure a cohesive progression throughout implementation.

### Support Services

Our factory trained technicians and customer support team guarantee a smooth operation after the installation. From spare parts, operational maintenance, and 24/7 service to application engineering and warranty management, KMH offers reassurance that you can focus your time on the core responsibilities most important to your valued customers.

**We Service What We Sell, Rent & Lease!**  
**INTEGRATED SYSTEMS**

**WWW.KMHSYSTEMS.COM**

<b>Conveyors</b> 	<b>AS/RS Systems</b> 	<b>Robotics</b> 	<b>AGVs</b> 	<b>Print &amp; Apply</b> 	<b>WMS Systems</b> 	<b>Storage &amp; Shelves</b> 	<b>Pallet Racking</b> 	<b>Pick Modules</b> 	<b>Carousels</b> 	<b>Mezzanines</b> 	<b>Spiral Conveyor</b> 
<b>Hardware</b> 	<b>Pick/Put-To-Light</b> 	<b>Voice Picking</b> 	<b>Bidge/Jib Cranes</b> 	<b>Slotting</b> 	<b>Controls</b> 	<b>Workstations</b> 	<b>Lift &amp; Tilt Tables</b> 	<b>Transfer Tables</b> 	<b>Manipulators</b> 	<b>Efficient Lighting</b> 	<b>Rack Netting</b> 



### Construction

Designed with performance, economics, and ergonomics in mind, TUFF Equipment offers a full line of Heavy Duty construction equipment for a wide range of applications. From compact track, skid steer, and wheel loaders to articulated dump trucks, excavators and telescopic handlers, TUFF Equipment Company applies the right mixture of equipment to ensure the most efficient response to your needs. Our seasoned team of application specialists carefully surveys your needs to understand your site constraints and customer-driven goals so that we can recommend the optimal solution for driving cost out of your operation.

### Compact Equipment

Compact equipment plays an increasingly important role on today's job sites than ever before. The ability to work in confined areas with smaller equipment and not sacrifice power or performance is key. TUFF Equipment offers NEW and USED compact equipment ranging from skidsteer and rubber track loaders to mini excavators, backhoes and wheel loaders. Equipment designed with superior ergonomics, maneuverability, serviceability, power, performance, and safety in mind helps make for a more productive day on the job. To add to the versatility of TUFF's compact equipment line, our manufacturers provide a vast assortment of attachments to help you get the job done more efficiently and effectively.

### Commercial Turf

When you make a living in property maintenance and grounds care you depend on your equipment to perform on demand. TUFF Equipment brings the same HEAVY DUTY attitude to our Commercial Turf Equipment. Bob-Cat and SCAG Brand Professional Mowers provide dependable service and cut-quality second to none. Additionally, the Powerful and Lightweight RedMax line of Handheld Power Equipment helps eliminate operator fatigue, while in turn increasing production on the job.

### Tree & Forestry

From Residential and Commercial Tree and Stump Removal to Utility and Right of Way Clearing, TUFF Equipment will provide the right equipment and support to assure success on the job site. Tried and True Professional Brush and Whole Tree Chippers, Stump Grinders, Forestry Mowers, and Horizontal Grinders are designed and manufactured with Heavy gauge steel and industry leading components and power plants.



### Material Handling

Need a lift? TUFF Equipment has you covered. Straight Mast Off Road 4x4 Forklifts, Telescopic Handlers, and Industrial Forklifts are available to handle various material handling needs. Equipment specifications range from 13' to 56' reaches and up to 12,000 lb. capacities. On the job site, the farm, the nursery, the material yard, or warehouse, TUFF Equipment can provide you with a lift that features industry-leading safety, comfort, and productivity.

### Equipment Rental

Depending on your business cycles and financial situation, TUFF Equipment offers a variety of methods of construction equipment acquisition and utilization. From certified reconditioned units, short and long term rentals to flexible financing programs; your TUFF Equipment team provides just what you need when you need it. Our award-winning team takes pride in helping you meet the challenges of your dynamic operation.

### Parts & Service

With computer-generated parts schematics for all of our construction equipment and over \$1 million dollars of parts' inventory in our network servicing all brands, TUFF dispatches the right parts to our certified technicians ensuring maximum fleet uptime and productivity. From tires, hydraulic hoses and batteries to engines, transmissions and control boards, TUFF Equipment protects your investment each and every day. We offer 24 hour shipment on over 96% of all parts dispatches.

### Governmental Supply & Support

TUFF Equipment and our manufacturers are proud to work with Local City, County, State, and Federal Government Agencies to supply the right equipment, parts, and service for years of dependable performance. From Turf and Tree Maintenance to Utility and Road Projects, TUFF Equipment will provide equipment that meets or exceeds stringent Safety, Performance, and Budget criteria.

**We Service What We Sell, Rent & Lease!**  
**CONSTRUCTION EQUIPMENT**



Excavators

Wheel Loaders

Front End Loaders

Loader Backhoes

Telescopic Handlers

Drum Rollers

Rough Terrain Forklifts

Rubber Tire Skidsteer Loaders

Articulating Dump Trucks

Equipment Trailers

Rubber Tracked Loaders

Mini & Mid-Size Excavators

Attachments

Off Road Trucks

Brush Chippers

Stump Grinders

Generators

Horizontal Grinders

Excavator Mulching

Forestry Crawler / Mulchers

Zero Turn Mowers

Walk Behind Mowers

Handheld Power Equipment

Trimmers / Blowers / Chainsaws

**WWW.KMHSYSTEMS.COM**

**HEAVY EQUIPMENT · COMPACT EQUIPMENT · TREE EQUIPMENT · TURF EQUIPMENT**



1976

**\$5 Million**  
Major Air Freight Contract  
KMH rapidly expands to \$5million in revenues thanks to our valued customers.



1980-83

**Equipment & Service Solutions**  
KMH acquires lift truck dealership.



1986

**Dealer of Excellence**  
KMH is awarded first of many "Dealer of Excellence" awards for their equipment & service solutions.



**MHEDA**  
Honors KMH with its Value Added Distributor of The Year Award.

1989

1993

1995



**KMH Opens**  
John Guenin opens Kettering Material Handling, Inc. as a conveyor distributor in Dayton, Ohio.



**Cincinnati Division**  
KMH Systems, Inc. opens up southern location in Cincinnati, Ohio.



**Fort Wayne, South Bend, & Logansport**  
KMH purchases three Equipment & Service dealerships in Fort Wayne, South Bend, & Logansport, Indiana.



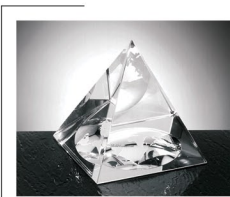
**Family Tree**  
2nd Generation Guenin family member purchases stock in KMH.



# Our Team: Pulling The Pieces Together

With KMH's trusted process of discovery, application engineering, collaboration, integration, managed implementation and support, our team adds another set of eyes to the underlying goal of lowering your cost per unit shipped. It is our honor to join your team of professionals to meet this challenge.

# Our Start. Our Growth. Our Appreciation...



2004

**OEM Achievement**  
KMH receives the highest level OEM award.

**Nashville Division**  
KMH Systems purchases largest lift truck operation in Nashville, Tennessee.

2008



2010

**Chicago Division**  
KMH purchases an equipment & service branch in Chicago, Illinois.

**Columbus Division**  
KMH opens up their first Central Ohio division in Columbus, Ohio and adds new managing partner.

2011



2012

**Construction Equipment**  
KMH acquires a construction equipment division in Nashville, TN representing only the highest quality providers.

**Lexington, Toledo & Grand Rapids**  
KMH expands with additional branches in Lexington, KY, Grand Rapids, MI, & Toledo, OH.

2012



**Atlanta Division**  
KMH expands with an additional branch in Atlanta, GA.

2013

KMH Systems, Inc.'s 40th anniversary celebrating years of customer service in the material handling and construction equipment industry.

**2016**  
40 YEARS

Serving Customers Throughout United States, Canada & Mexico

